

Industrial Piping Systems



INDUSTRIAL SYSTEMS

YOUR INDUSTRIAL SPECIALIST

- Process Piping
- Acid Waste
- Double Containment & Leak Detection
- Specialty Systems

We build tough products for tough environments.®



IPEX

Your industrial specialist.



Imagine. Every plastic pipe, valve or fitting you need for any industrial project available from one reliable, accountable source. Only IPEX offers complete PVF systems for process piping, double containment, high-purity, acid waste and compressed air systems, designed, manufactured and backed by one company. You can be confident that your IPEX PVF system is engineered and produced to the strictest quality, dimensional and performance standards.

Process Piping Systems

Xirtec¹⁴⁰ **CORZAN[®]**

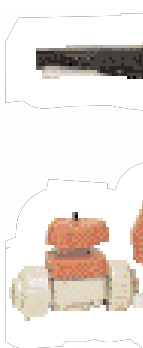
IPEX Vinyl Process Piping Systems

Only IPEX offers **Xirtec¹⁴⁰** and **Corzan[®]**, complete systems of pipe, fittings, flanges, strainers and valves to meet all your process system requirements. **Xirtec¹⁴⁰ (PVC)** and **Corzan[®] (CPVC)** pipe, valves and fittings are high-performance systems designed to meet the temperature, pressure and size requirements of piping systems used in chemical processes and other industrial applications.

IPEX process piping systems feature outstanding resistance to photodegradation and creep stress, and immunity to oxidation, and are exceptionally suited for use with a wide range of acids, alcohols, salts and halogens. As well as lowering material costs, **Xirtec¹⁴⁰**



and **Corzan[®]** pipe significantly reduces labor and transportation costs because it is light, and easily handled, stored, cut and joined. The perfect long service, low maintenance alternative to common and exotic metal systems. IPEX vinyl process systems are available in Schedule 40 and Schedule 80, IPS. Pipe and fittings are also available in cast iron sizes.





enpure™

High Purity Polypropylene System

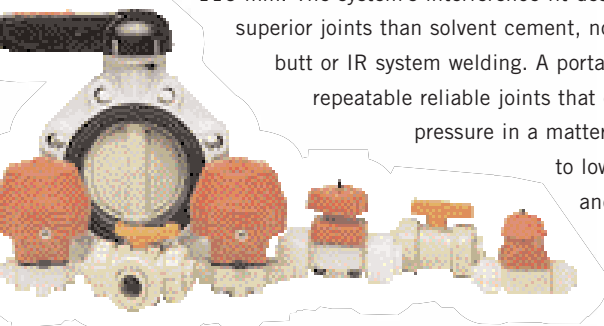
For almost 20 years, **Enpure™** has proven to be one of the most complete and dependable pure-water thermoplastic piping systems available. From the manufacturing of cosmetics to solutions for medical use; from pure-water lab applications to dialysis machines, **Enpure™** is designed to meet all challenges. Manufactured with FDA approved materials, **Enpure™** natural polypropylene pipe, valves and fittings eliminate the potential of contamination of your pure process. And, unlike conventional systems, **Enpure™** is designed as a socket fusion system. No hazardous chemicals are used for joining, making connections as “clean” as any other component in the system.



Socket Fusion Polypropylene System

Made from one of the most versatile thermoplastic materials, the **Socket Fusion Polypropylene System (SF Polypro)** offers metric pipe, valves and fittings that can be jointed in minutes to create superior connections. It is chemically and electrochemically inert, non-conductive and resists galvanic corrosion making it an ideal system for the most demanding chemical agents. The Socket Fusion system works in a broad range of applications and industries including the plating industry, steel cable manufacturing, battery manufacturing, circuitboard manufacturing and the food industry, to name a few.

The IPEX **Socket Fusion Polypropylene System** offers a complete range of 150 psi rated pipe, valves and fittings ranging from 20 mm to 110 mm. The system's interference-fit design provides far superior joints than solvent cement, non-interference fit, butt or IR system welding. A portable tool makes repeatable reliable joints that can be tested at full pressure in a matter of minutes, helping to lower your installation and maintenance costs.



Duraplus

ABS Industrial System

Duraplus® complete ABS pressure pipe, valves and fitting systems are ideal for abrasive slurries, separation reagents, caustic process, low temperature glycol systems and many other demanding applications including outdoor systems.



Duraplus® features:

- High impact strength
- Outstanding ductility
- Wide chemical resistance
- Operating range from -40°F to +176°F
- Long-term UV resistance
- Easy and proven joining method
- Competitive installed cost



Double Containment & Leak Detection

Leaks are not an option

The IPEX family of double containment systems includes **Guardian** PVC and CPVC double containment systems, **Encase™** polypro double containment system, **CustomGuard™** FRP and metal systems and **Centra-Guard™** leak detection.

Guardian

Vinyl Double Containment System

Certain environments demand *fail-safe* systems. The double containment professionals at IPEX understand the complexity of design and installation for demanding double containment applications. For the past 15 years **Guardian** systems have been the benchmark in double containment. Guardian's patented

Centra-Lock™ design requires up to 40 per cent fewer joints.

Guardian systems are

available in tough industrial grade PVC and even tougher high temperature CPVC.

Encase™

PP Double Containment System

Encase™ has set the standard for acid waste double containment systems. At the heart of

our patented **Encase™** polypro system is its electrofusion fitting with a groundbreaking heavy-gauge resistance wire *molded* into the socket. The result is a premier off-the-shelf system that offers considerable reduction of installation time and the highest quality bubble-tight joints available.

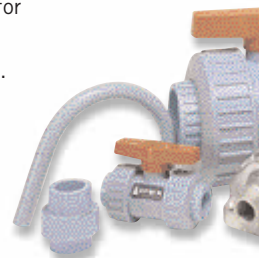
CustomGuard™

Black polypro; Red KYNAR; FRP; carbon steel; stainless; copper; clear PVC; ABS are all available options for custom-designed and built double containment systems including dissimilar materials systems.

Centra-Guard™

IPEX's patented **Centra-Guard™** leak detection system

provides innovative point-of-collection leak detection, featuring both submerged (wet) and proximity (dry) leak sensors.



Acid Waste Systems

ENFIELD®

LABLINE™

PLENUMLINE™

NEUTRATANK™

FLOWAY™

For more than 20 years IPEX has provided laboratories throughout North America with complete acid waste systems designed to take a variety of chemicals. Pour it, flush it or dump it – from school labs to industrial labs, **Enfield®** and **Labline™** polypro acid waste systems are built to handle it.

Plenumline™ is a robust acid waste system, made from flame-retardant PVDF thermoplastic, designed for challenging conditions, including highly restrictive return air plenum applications and high-temperature corrosive chemical waste situations.

Since their introduction, **Enfield®** electrofusion fittings and **Labline™** mechanical joints have revolutionized the industry – and they continue to be regarded as state-of-the-art. **Enfield®** offers the premier polypro fusion fittings available today, constructed with a heavy-gauge resistance wire integrally *molded* into the socket. **Labline™** and **Plenumline™** feature our new no-heat

Elastolive for quicker installation and higher performance.

IPEX's broad range of products and systems for acid waste includes **Enfield®**, **Labline™**, **Plenumline™**, **Neutratanke™** neutralization tanks,

Neutrasystem2™ pH monitoring and

Floway™ drains.



Compressed Air Systems



Duratec™ Airline is a compressed air and inert gas distribution system. Its



unique composite structure incorporates a rigid yet flexible aluminum core, permanently bonded to layers of durable high density polyethylene (HDPE) plastic. HDPE on the inner and outer layers provides the best corrosion resistance against aggressive manufacturing environments while eliminating the inner scaling, pitting and corrosion associated with traditional metal pipes.



Duratec™ Airline fittings are supplied in tough nickel plated brass or stainless steel and utilize unique double o-ring seals to ensure long term joint integrity. Duratec

is available in lightweight 100' and 300' coils, which drastically reduces the number of pipe joints and fittings required in the system. Sizes from 3/8" to 1".



Duraplus™ Air-Line® is a high-impact, high ductility, ABS compressed air system. Its unique co-extruded nylon liner in the pipe improves resistance to synthetic compressor fluids.

And solvent cement joints means installation is easier than with polyethylene fused systems that require expensive and cumbersome equipment.

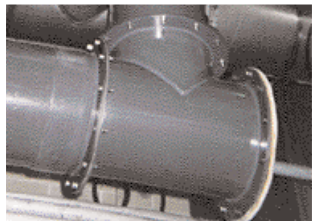
Duraplus™ Air-Line® is corrosion-resistant and features metal-to-ABS special adapter fittings,

single and multi-port wall brackets, high-efficiency dropper bends and blue color-coding for easy identification. Sizes 20mm to 110mm (metric).

Specialty Products

Ventilation Duct System

Our highly chemically resistant PVC ventilation duct system features seamless pipe for greater flow-rate, light weight for easy handling and low installation costs. Sizes from 6" to 24".



Grooved PVC Pipe

Specially factory-grooved PVC pipe for mechanical grooved couplings allows quick assembly under adverse conditions. Size range Schedule 40 (2" to 8"); Schedule 80 (2" to 12"); SDR 26 (6" to 12"); NSDR (4" to 12"). Larger sizes are also available upon request.

Well Casing

Corrosion-resistant, maintenance-free protection for well-drop-pipe and submersible pumps in sizes from 2" to 16".

IPEX Solvent Cements

IPEX now offers a complete range of cements, primers and applicators. Choosing the correct cement is critical to ensuring the performance of a thermoplastic piping system. IPEX cements allow the installer to select the absolutely best product for their application. This coupled with IPEX's recommended solvent cement procedure will guarantee a perfect joint every time. We offer cements and primers for all our PVC, CPVC and ABS industrial systems.

IPEX cements are formulated to meet the highest standards. For a full system manufacturer warranty, use IPEX cements and IPEX pipe, valves and fittings.

PROCESS PIPING SYSTEMS



	XIRTEC®140	CORZAN®	ENPURE™	DURAPLUS® INDUSTRIAL ABS	SOCKET FUSION POLYPROPYLENE
PIPE (also available grooved)					
Schedule 40	1/2" – 24"	1/2" – 16"			
Schedule 80	1/2" – 24"	1/2" – 16"	1/2" – 4"	3/8" – 12"	
SDR 41/51	1/2" – 48"				
PN10 (150 psi)					20mm – 110mm
FITTINGS					
Schedule 40	1/2" – 12" molded 12" – 24" fabricated*				
Schedule 80	1/2" – 12" molded 12" – 24" fabricated*	1/2" – 12" molded 12" – 24" fabricated*	1/2" – 4"	1/2" – 12"	
PN10 (150 psi)					20mm – 110mm
VALVES					
Quarter Turn	1/2" – 12"	1/2" – 12"	1/2" – 2"	2" – 8"	20mm – 110mm
Check	1/2" – 8"	1/2" – 4"	2"	3/8" – 3"	20mm – 90mm
Multi-Turn	1/2" – 6"	1/4" – 4"	1/2" – 2"	1/2" – 3"	20mm – 110mm
Strainers	1/2" – 4"			1/2" – 2"	20mm – 110mm
Actuation	1/4" – 12"	1/4" – 12"	1/2" – 2"	3/8" – 8"	20mm – 110mm

Also available: Duraplus® Air-Line, ventilation duct pipe, well casing, speciality valves (PVDF and PP)
(*FRP overwrapped)

ACID WASTE SYSTEMS

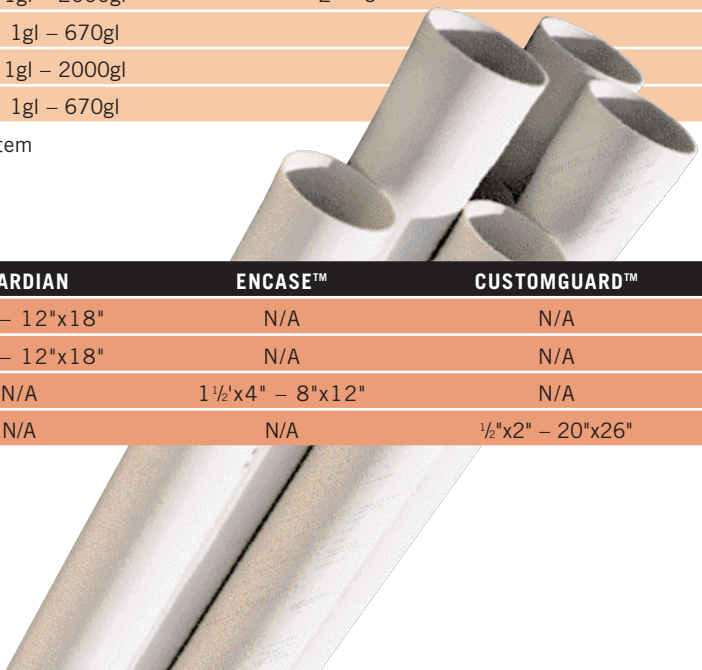
		ENFIELD®	LABLINE™	PLENUMLINE™
PIPE				
Schedule 40 Black PP		1 1/2" – 12"	1 1/2" – 12"	
Schedule 80 Black PP		1 1/2" – 12"	1 1/2" – 12"	
Schedule 40 Green FRPP		1 1/2" – 12"	1 1/2" – 12"	
Schedule 40 Dark Blue FR-PVDF				1 1/2" – 4"
FITTINGS				
Black PP		1 1/2" – 12"		
Green FRPP		1 1/2" – 12" molded	1 1/2" – 4"	
Dark Blue FR-PVDF				1 1/2" – 4"
NEUTRATANK™				
PP Cylindrical		1gl – 2000gl	2" – 6"	
PP Rectangular		1gl – 670gl		
PE Cylindrical		1gl – 2000gl		
PE Rectangular		1gl – 670gl		

Also available is our Neutrasystem2 pH monitoring system

DOUBLE CONTAINMENT SYSTEMS

		GUARDIAN	ENCASE™	CUSTOMGUARD™
PVC		1/2"x2" – 12"x18"	N/A	N/A
CPVC		1/2"x2" – 12"x18"	N/A	N/A
PP		N/A	1 1/2'x4" – 8"x12"	N/A
Dissimilar Materials		N/A	N/A	1/2"x2" – 20"x26"

Also available is Centra-Guard™ leak detection system



For more information or to be included on our mailing list for new product announcements, complete this card and fax it back to us at (905) 403-1124.

Name _____

Title _____ Dept. _____

Company _____

Address _____

City _____ Province _____

Postal Code _____ Phone _____

Fax _____ E-mail _____

Company classification

- Distributor
- Consulting Engineer
- Contractor
- OEM – Products manufactured:

- Inspector
- Government

SIC or industry sector:

I am primarily interested in the following thermoplastics (check all that apply):

- Pipe
- Valves
- Fittings
- Double containment systems
- Acid waste and drainage
- High purity systems
- Compressed air systems
- Other _____

I would like:

- Information on my closest IPEX distributor

Please forward information on:

- Xirtec & Corzan process piping systems
- Enpure high-purity polypropylene system
- Duraplus ABS industrial system
- SF polypropylene system
- Enfield electrofusion acid waste system
- Labline mechanical joint acid waste system
- Neutratanek neutralization tanks
- Neutrastem2 pH monitoring
- Floway drains

- Manual and actuated thermoplastic valves
- Guardian PVC and CPVC double containment systems
- Encase polypro double containment system
- CustomGuard specialty double containment systems
- Centra-Guard leak detection system
- Duratec Airline compressed air and inert gas distribution system
- Duraplus Air-Line compressed air system
- IPEX ventilation system
- Grooved PVC pipe
- Well casing
- IPEX solvent cements

I would also like to know about other IPEX products:

- Plumbing and mechanical piping systems
- Electrical or telecommunications piping systems
- Municipal piping systems
- Irrigation piping systems
- Radiant heating systems for residential, commercial and/or industrial applications

www.ipexinc.com

fax: (905) 403-1124



IPEX



SALES AND CUSTOMER SERVICE

Canadian Customers call
Toll Free: (866) 473-9462 (IPEX INC)

U.S. Customers call
Toll Free: (800) 463-9572

www.ipexinc.com

About IPEX

IPEX is a leading supplier of thermoplastic piping systems. We provide our customers with one of the world's largest and most comprehensive product lines. All IPEX products are backed by more than 50 years of experience. With state-of-the-art manufacturing facilities and distribution centers across North America, the IPEX name is synonymous with quality and performance.

Our products and systems have been designed for a broad range of customers and markets. Contact us for information on:

- PVC, CPVC, PP, ABS, PEX, FR-PVDF and PE pipe and fittings (1/4" to 48")
- Industrial process piping systems
- Double containment systems
- Acid waste systems
- High purity systems
- Industrial, plumbing and electrical cements
- Municipal pressure and gravity piping systems
- PE Electrofusion systems for gas and water
- Plumbing and mechanical piping systems
- Electrical systems
- Telecommunications and utility piping systems
- Irrigation systems
- Radiant heating systems

WARRANTY: All IPEX products are guaranteed against defects resulting from faulty workmanship or materials. If any such product is found to be defective by reason of faulty workmanship or materials, upon written notice and return of the product, the defective product will be replaced by IPEX free of charge, including shipping charges for the replacement product. Claims for labor costs and other expenses required to replace defective product or to repair any damage resulting from the use thereof will not be allowed by IPEX. Our liability is limited to the price paid for the defective product. IPEX will not be bound by any warranty other than set forth above, unless such warranty is in writing. This literature is published in good faith and is believed to be reliable. However IPEX does not represent and/or warrant in any manner the information and suggestions contained in this brochure. Data presented is the result of laboratory tests and field experience.

IPEX maintains a policy of ongoing product improvement. This may result in modification of features or specifications without notice.

OVINNAIP050905
© 2005 IPEX IND001UC



IPEX

