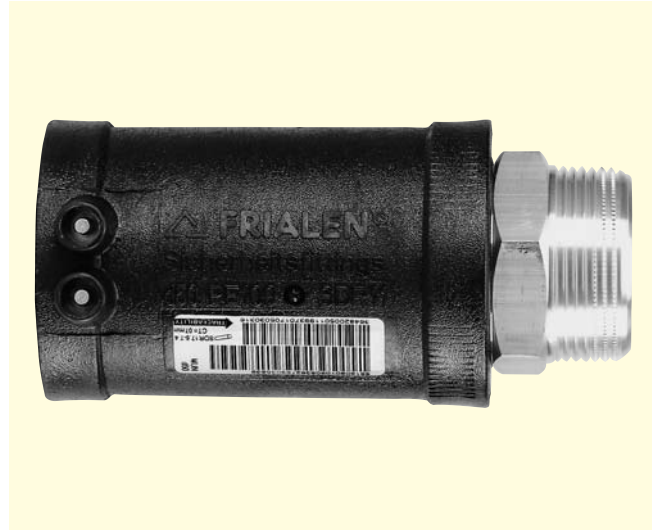
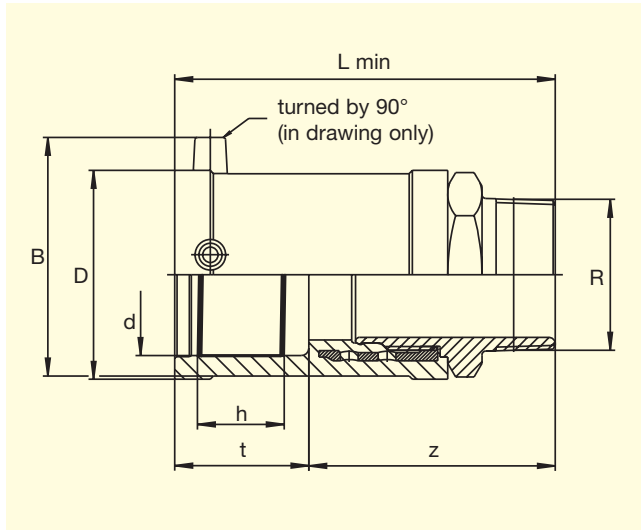


# FRIALEN®-Transition Fittings HDPE/Brass MUN with external thread\*

## PE 100 SDR 11

Maximum working pressure 16 bar (Water)



\* Standard: Brass. Gunmetal and V2A on request

d	R ①	Order-Ref.	Stock-status	VE	PE	D	t	L <sub>min</sub>	z	h	B	Weight kg/each
20	1/2"	T-612 710	1	40	3.600	35	33	91	58	15	-	0.120
25	3/4"	T-612 711	1	30	2.700	40	36.5	99	63	19.5	-	0.210
32	1"	T-612 712	1	20	1.800	47	42	112	70	23.5	61	0.300
32	1 1/4"	T-612 709	1	20	1.800	47	42	120	70	23.5	61	0.360
32	1 1/2"	T-612 698	1	15	1.350	47	42	121	70	23.5	61	0.380
40	1"	T-612 721	1	20	1.000	58	45.5	123	75	30	69.5	0.480
40	1 1/4"	T-612 713	1	20	1.000	58	45.5	126	77	30	69.5	0.460
40	1 1/2"	T-612 718	1	20	1.000	58	45.5	127	78	30	69.5	0.520
40	2"	T-612 725	1	20	1.000	58	45.5	132	86	30	69.5	0.750
50	1"	T-612 719	1	15	750	70	53	134	81	29.8	80	0.580
50	1 1/4"	T-612 716	1	15	750	70	53	136	83	29.8	80	0.610
50	1 1/2"	T-612 714	1	15	750	70	53	137	84	29.8	80	0.590
50	2"	T-612 706	1	15	750	70	53	147	94	29.8	80	0.800
63	1 1/4"	T-612 722	1	10	500	84	53	138	84	35	93.5	0.910
63	1 1/2"	T-612 717	1	10	500	84	53	137	84	35	93.5	0.940
63	2"	T-612 715	1	10	500	84	53	142	89	35	93.5	0.940
75	2"	T-612 694	1	10	320	98	61	165	104	37.5	-	1.470
75	2 1/2"	T-612 695	1	10	320	98	61	167	106	37.5	-	1.370

① Other thread sizes on request

FRIALEN®-Safety Fittings can be fused to pipes of SDR stages 11 to 17.6  
DVGW-Registration Nos.: DV-7501AU2256 and DV-7501AU2257

Please turn over for important information regarding application of  
**FRIALEN®-Transition Fittings MUN**



# **FRIALEN<sup>®</sup>-Transition Fittings HDPE/Brass MUN**

## **with external thread\***

### **PE 100 SDR 11**

Maximum working pressure 16 bar (Water)

#### **Areas of Application**

FRIALEN<sup>®</sup>-Transition Fittings MUN are threaded joints as an adaptor from a metal pipe with internal thread to a HDPE pipe. Joint on the part of HDPE by FRIALEN<sup>®</sup>-Coupler.

#### **Assembly Instructions**

The threaded component must be held with a spanner to prevent it twisting in the HDPE component.

The fusion of the HDPE side takes place by FRIALEN<sup>®</sup>-fusing – leakproof and longitudinally strong.

The installation of the brass and the HDPE side has to be prepared according to the general installation instructions (see "Transition Fittings with threaded connection" in "Assembly Instructions" for "FRIALEN<sup>®</sup>-Safety Fittings for house connections and distribution pipes up to d 225").

This involves removing the oxide skin and cleaning the pipe ends.

#### **Eight good reasons for using the FRIALEN<sup>®</sup>-Transition Fittings MUN**

- **Compact construction**
- **HDPE side with exposed heating element for optimal heat transfer**
- **Cold zones at the end to prevent the flow of molten material**
- **No holding clamps required**
- **Large insertion depth, extra wide fusion zones**
- **Brass end permanently anchored in the HDPE and will not distort**
- **Self sealing patented sealing geometry without elastomer seal**
- **Additional barcode for tracing back the underground fitting (Traceability-Coding).**

Please find our datasheets for downloading on the internet at [www.friatec.de](http://www.friatec.de)

**For further information, please call our FRIALEN<sup>®</sup>-customer service staff and specialist advisers.**