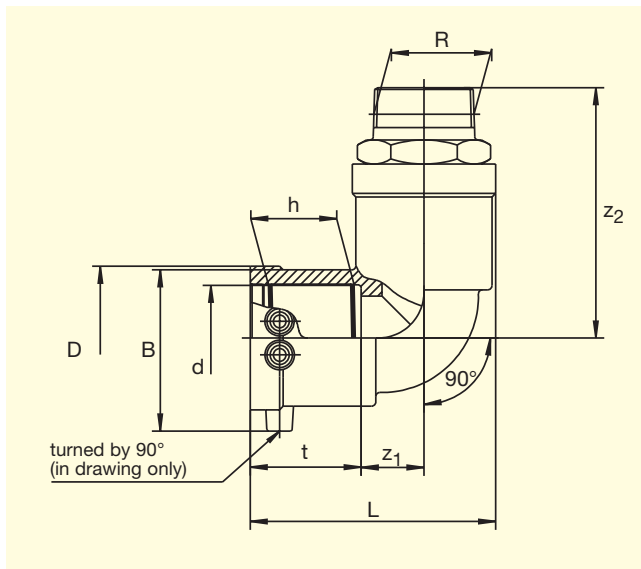


FRIALEN®-Transition Elbows 90°**HDPE/Brass WUN 90°****with external thread*****PE 100 SDR 11**

Maximum working pressure 16 bar (Water)



* Standard: Brass. Gunmetal and V2A on request

d	R ①	Order-Ref.	Stock-status	VE	PE	D	t	L	z ₁	z ₂	h	B	Weight kg/each
32	1"	T-612 120	1	20	1.000	47	42	85	21	89	23,5	61	0.320
32	1½"	T-612 140	1	20	1.000	47	42	94	21	93	23.5	61	0.470
40	1"	T-612 127	1	15	750	58	45.5	102	27	101	30	69.5	0.480
40	1¼"	T-612 122	1	15	750	58	45.5	102	27	103	30	69.5	0.520
40	1½"	T-612 121	1	15	750	58	45.5	102	27	104	30	69.5	0.580
50	1"	T-612 119	1	10	500	70	53	118	30	110	29.8	80	0.640
50	1¼"	T-612 123	1	10	500	70	53	118	30	112	29.8	80	0.670
50	1½"	T-612 124	1	10	500	70	53	118	30	113	29.8	80	0.680
63	1½"	T-612 125	1	10	320	84	53	128	33	116	35	93.5	0.980
63	2"	T-612 126	1	10	320	84	53	128	33	121	35	93.5	1.000

① Other thread sizes on request

FRIALEN®-Safety Fittings can be fused to pipes of SDR stages 11 to 17.6
 DVGW-Registration Nos.: DV-7501AU2256 and DV-7501AU2257

Please turn over for important information regarding application of
FRIALEN®-Transition Elbows WUN 90°

FRIALEN[®]-Transition Elbows 90°

HDPE/Brass WUN 90°

with external thread*

PE 100 SDR 11

Maximum working pressure 16 bar (Water)

Areas of Application

FRIALEN[®]-Transition Elbows WUN 90° are threaded joints as an adaptor from a metal pipe with internal thread to a HDPE pipe. Joint on the part of HDPE by FRIALEN[®]-Coupler.

Assembly Instructions

The threaded component must be held with a spanner to prevent it twisting in the HDPE component.

The fusion of the HDPE side takes place by FRIALEN[®]-fusing – leakproof and longitudinally strong.

The installation of the brass and the HDPE side has to be prepared according to the general installation instructions (see "Transition Fittings with threaded connection" in "Assembly Instructions" for "FRIALEN[®]-Safety Fittings for house connections and distribution pipes up to d 225"). This involves removing the oxide skin and cleaning the pipe ends.

Seven good reasons for using the FRIALEN[®]-Transition Elbows WUN 90°

- **Compact construction**
- **HDPE side with exposed heating element for optimal heat transfer**
- **Cold zones at the end to prevent the flow of molten material**
- **No holding clamps required**
- **Large insertion depth, extra wide fusion zones**
- **Self sealing patented sealing geometry without elastomer seal**
- **Additional barcode for tracing back the underground fitting (Traceability-Coding).**

Please find our datasheets for downloading on the internet at www.friatec.de

For further information, please call our FRIALEN[®]-customer service staff and specialist advisers.