

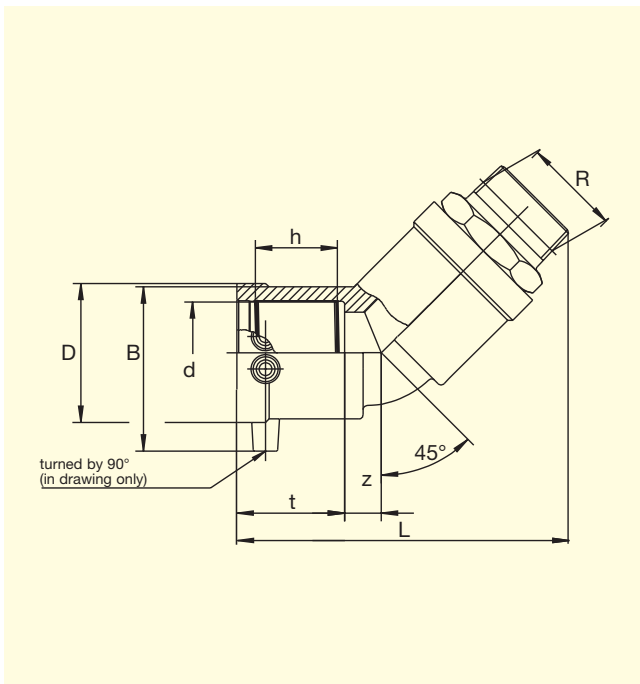
FRIALEN®-Transition Elbows 45°

HDPE/Brass WUN 45°

with external thread*

PE 100 SDR 11

Maximum working pressure 16 bar (Water)



* Standard: Brass. Gunmetal and V2A on request

d	R ①	Order-Ref.	Stock-status	VE	PE	D	t	L	z	h	B	Weight kg/each
32	1"	T-612 145	1	20	1.000	47	42	126	10	23.5	61	0.380
40	1 1/4"	T-612 149	1	15	750	58	45.5	140	17	30	69.5	0.490
40	1 1/2"	T-612 139	1	15	750	58	45.5	142	17	30	69.5	0.560
50	1 1/2"	T-612 144	1	10	500	70	53	163	18	29.8	80	0.640
63	1 1/2"	T-612 147	1	10	320	84	53	176	22	35	93.5	0.980
63	2"	T-612 146	1	10	320	84	53	178	22	35	93.5	0.990

① Other thread sizes on request

FRIALEN®-Safety Fittings can be fused to pipes of SDR stages 11 to 17.6
 DVGW-Registration Nos.: DV-7501AU2256 and DV-7501AU2257

Please turn over for important information regarding application of
FRIALEN®-Transition Elbows WUN 45°



FRIALEN[®]-Transition Elbows 45°

HDPE/Brass WUN 45°

with external thread*

PE 100 SDR 11

Maximum working pressure 16 bar (Water)

Areas of Application

FRIALEN[®]-Transition Elbows WUN 45° are threaded joints as an adaptor from a metal pipe with internal thread to a HDPE pipe. Joint on the part of HDPE by FRIALEN[®]-Coupler.

Assembly Instructions

The threaded component must be held with a spanner to prevent it twisting in the HDPE component.

The fusion of the HDPE side takes place by FRIALEN[®]-fusing – leakproof and longitudinally strong.

The installation of the brass and the HDPE side has to be prepared according to the general installation instructions (see "Transition Fittings with threaded connection" in "Assembly Instructions" for "FRIALEN[®]-Safety Fittings for house connections and distribution pipes up to d 225"). This involves removing the oxide skin and cleaning the pipe ends.

Seven good reasons for using the FRIALEN[®]-Transition Elbows WUN 45°

- **Compact construction**
- **HDPE side with exposed heating element for optimal heat transfer**
- **Cold zones at the end to prevent the flow of molten material**
- **No holding clamps required**
- **Large insertion depth, extra wide fusion zones**
- **Self sealing patented sealing geometry without elastomer seal**
- **Additional barcode for tracing back the underground fitting (Traceability-Coding).**

Please find our datasheets for downloading on the internet at www.friatec.de

For further information, please call our FRIALEN[®]-customer service staff and specialist advisers.