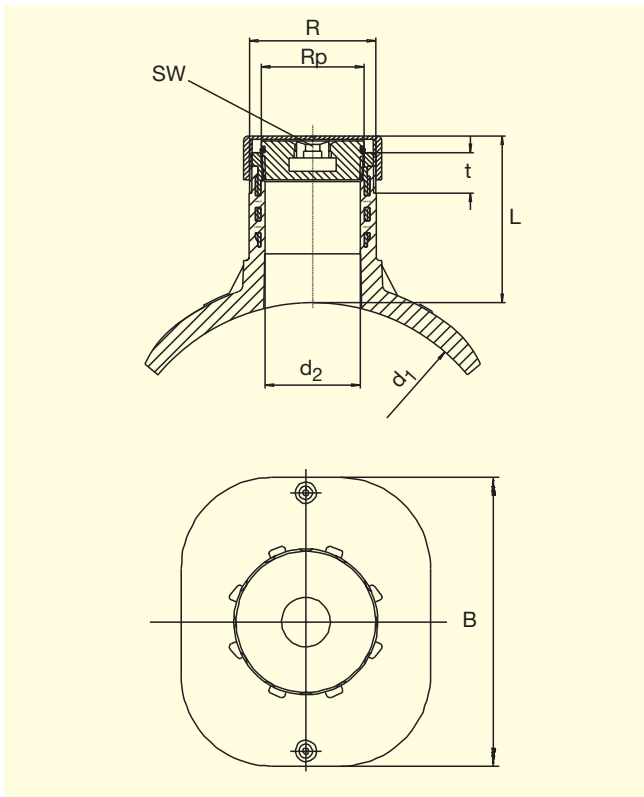


# FRIALEN®-Shut off Saddle Top-Loading SPA-TL suitable for normal commercial shut off equipment

**PE 100 SDR 11**

Maximum working pressure 16 bar (Water) / 10 bar (Gas)



| d <sub>1</sub>                | d <sub>2</sub> | R        | R <sub>p</sub> | Order Ref. | Stock-status | VE | PE  | B   | L   | t  | SW | Weight kg/each |
|-------------------------------|----------------|----------|----------------|------------|--------------|----|-----|-----|-----|----|----|----------------|
| 250-315 <sup>①</sup><br>(560) | 56.5           | G 2 1/2" | G 2"           | T-615 395  | 1            | 18 | 144 | 200 | 110 | 24 | 19 | 1.358          |

FRIALEN®-Safety Fittings can be fused to pipes of SDR stages 11 to 17.6  
DVGW-Registration No.: DV-8611AU2250

① d<sub>1</sub> up to d 560. Please refer to the instructions of the manufacturer of the balloon.

Please turn over for important information regarding application of the  
**FRIALEN®**-Shut off Saddle SPA-TL



# **FRIALEN<sup>®</sup>-Shut off Saddle Top-Loading SPA-TL suitable for normal commercial shut off equipment**

## **PE 100 SDR 11**

Maximum working pressure 16 bar (Water) / 10 bar (Gas)

### **Areas of Application**

FRIALEN<sup>®</sup>-Shut off Saddle SPA-TL is suitable for normal commercial shut off equipment.

### **Assembly Instructions**

The saddle is clamped onto the pipe with the FRIATOP clamping device (see pricelist "Technical Equipment"). Please read the "Assembly and Operating Instructions for FRIATOP clamping unit (Top-Loading)".

The fusion of the HDPE mains and the FRIALEN<sup>®</sup>-Shut off Saddle Top-Loading takes place by FRIALEN<sup>®</sup>-fusing – leakproof and longitudinally strong.

The pipe and the saddle have to be prepared according to the general installation instructions (see Assembly Instructions for "FRIALEN<sup>®</sup>-Large Pipe Technique for laying large pipes and relining pipe networks"). This involves removing the oxide skin and cleaning the pipe covered by the saddle.

### **Eight good reasons for using the FRIALEN<sup>®</sup>-Shut off Saddle SPA-TL**

- **Compact construction**
- **HDPE saddle with exposed heating element for optimal heat transfer**
- **Compact part suitable for normal commercial shut off equipment for tapping through the saddle**
- **Brass-guide thread permanently and immovable anchored in the HDPE**
- **Includes brass plug with square recess**
- **Protection against access to the dome by fusing on a FRIALEN<sup>®</sup> SPAK**
- **The SPA-TL can be applied universally to large HDPE pipe diameters d 250-315 (560). This means additional economy due to less material needed and less stock both with suppliers and trade**
- **Additional barcode for tracing back the underground fitting (Traceability-Coding).**

Please find our datasheets for downloading on the internet at [www.frialen.de](http://www.frialen.de)

**For further information, please call our  
FRIALEN<sup>®</sup>-customer service staff and specialist advisers.**