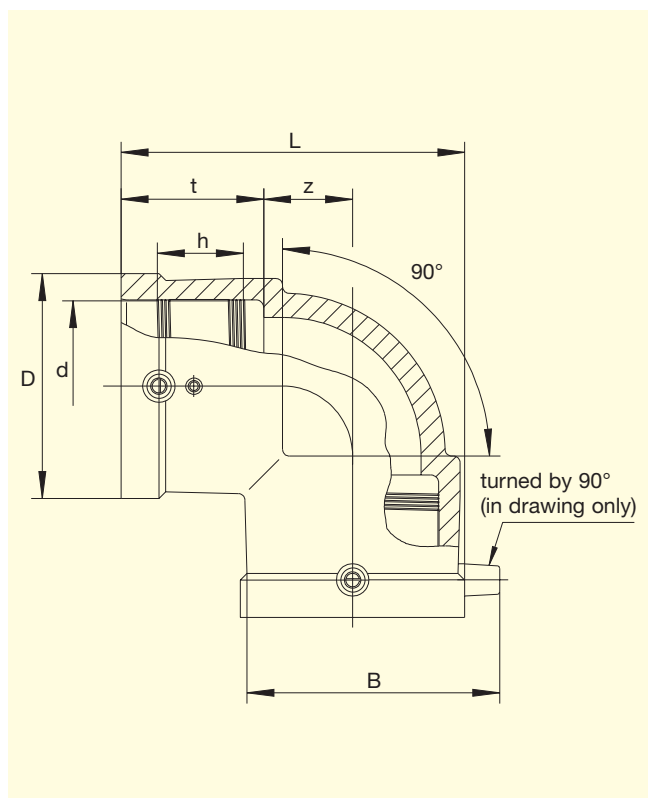


**FRIALEN®-Elbows (Electrofusion) W90°****PE 100 SDR 11**

Maximum working pressure 16 bar (Water) / 10 bar (Gas)



d	Order-Ref.	Stock-status	VE	PE	D	L	t	z	h	B	Weight kg/each
25	T-612 091	1	30	1500	37	73	40.0	15.0	18.8	54	0.058
32	T-612-093	1	20	1000	43	82	44.0	16.0	21.3	61	0.072
40	T-612 095	1	13	650	53	96	48.5	20.5	29.0	70	0.112
50	T-612 097	1	9	450	66	113	54.5	25.5	32.0	81	0.190
63	T-612 099	1	4	200	83	136	62.0	33.0	30.0	96	0.340
75	T-612 101	1	12	216	96	170	70.0	52.5	37.0	111	0.595
90	T-612 103	1	6	108	115	202	75.0	65.0	45.0	128	0.953
110	T-612 105	1	10	80	138	234	81.0	84.0	50.0	150	1.563
125	T-612 107	1	8	64	157	254	87.0	89.0	43.5	167	2.029
160	T-615 276	1	3	24	207	329	92.0	133.0	43.5	210	4.845
180	T-615 689	1	3	24	228	354	94.0	146.0	64.5	229	5.761
225	T-615 690	1	1	8	280	430	113.0	177.0	66.0	281	10.220

FRIALEN®-Safety Fittings can be fused to pipes of SDR stages 11 to 17.6

DVGW-Registration Nos.: DV-8601AU2248 and DV-8606AU2249

Please turn over for important information regarding application of the **FRIALEN®-Elbows W90°**.

# **FRIALEN®-Elbows (Electrofusion) W90°**

## **PE 100 SDR 11**

Maximum working pressure 16 bar (Water) / 10 bar (Gas)

### **Areas of Application**

The FRIALEN®-Elbow W90° is used for all changes of direction in HDPE pipes.

### **Assembly Instructions**

The fusion of the pipe ends with the FRIALEN®-Elbows W90° takes place by FRIALEN®-fusing – leakproof and longitudinally strong.

The pipe ends are prepared according to the general installation instructions (see “Assembly Instructions” for “FRIALEN®-Safety Fittings for house connections and distribution pipes up to d 225”). This involves removing the oxide skin and cleaning the pipe ends.

### **Eleven good reasons for using the FRIALEN®-Elbows W90°**

- Large coupler depth for ease of pipe guiding (no holding clamps required)
- Extra wide fusion zones
- Maximum stability through great wall thickness
- Cold zones at the front side and in the middle of the coupler
- Exposed heating coil for direct heat transmission to the pipe
- Small annular gap for build-up of optimum joining pressure in the fusion zone
- Contacts safe to touch
- Fusion indicator for visual fusion control
- Durable batch marking
- Individually wrapped for dirt protection
- Additional barcode for tracing back the underground fitting (Traceability-Coding).

**For further information, please call our FRIALEN® customer service staff and specialist advisers.**

Please find our datasheets for downloading on the internet at [www.friatec.com](http://www.friatec.com)