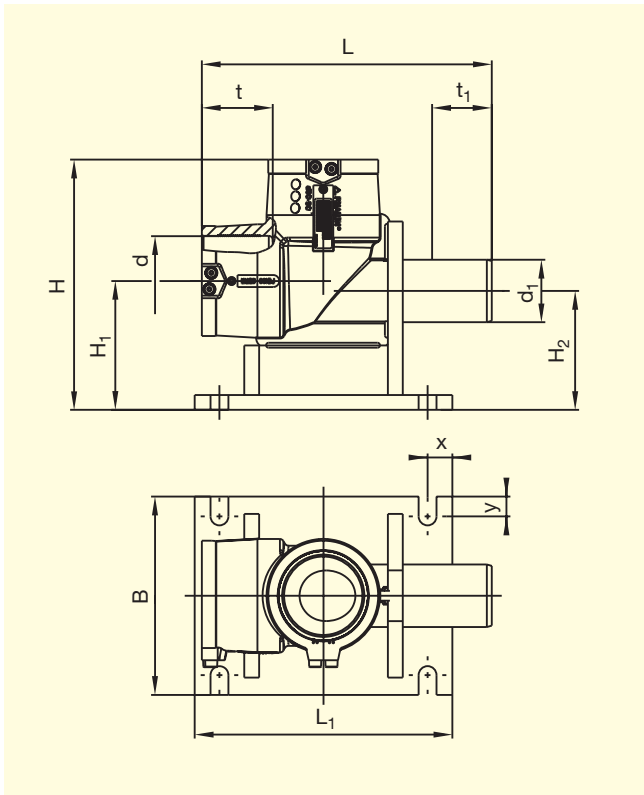


FRIALEN®-Elbow 90° with Foot Unit WF 90° for hydrant connection *PE 100 SDR 11*

Maximum working pressure 16 bar (water)



d	d ₁	Order-Ref.	Stock-status	VE	PE	H	H ₁	H ₂	B	L	L ₁	t	t ₁	x	y	Weight kg/each
90	63	T-615 989	1	3	54	253	130	120	200	293	260	72	63	25	20	2.170
110	63	T-615 998	1	6	48	293	142	127	200	346	260	83	63	25	20	2.880

FRIALEN®-Safety Fittings can be fused to pipes of SDR stages 11 to 17.6
DVGW-Registration No.: DV-8606AU2249

Please turn over for important information regarding application of
FRIALEN®-Elbow with Foot Unit WF 90°



FRIALEN[®]-Elbow 90° with Foot Unit WF 90°

for hydrant connection

PE 100 SDR 11

Maximum working pressure 16 bar (water)

Areas of Application

The FRIALEN[®]-Elbow with Foot Unit WF 90° allows for connection of a hydrant alongside the mains.

The hydrant connection takes place either

- by fusing the HDPE pointed end of the hydrant with the construction part or
- for a hydrant with flange connection by applying the FRIALEN[®]-Full Faced Flange EFL or with a Flange Reduction FLR d 110/DN 80.

Connection to the HDPE mains takes place without pressure via the FRIALEN[®]-Spigot Saddle SA d110/90-225/110 (see Data Sheet No. 27 and leaflet) or under operating pressure with an additional cut-off device. For drilling into the mains we recommend drilling equipment by Hütz + Baumgarten.

Assembly Instructions

Please refer to the FRIALEN[®] "Assembly Instructions" for preparations for the FRIALEN[®]-fusion process (two fusion procedures) of the elbow piece with HDPE pipes or HDPE pipe and HDPE valve (marking insertion depth, removing oxide skin, cleaning, etc.).

For further information please call our FRIALEN[®] customer service staff and specialist advisers.

Ten good reasons for using the FRIALEN[®]-Elbow with Foot Unit WF 90°:

- **Great wall thickness ensures optimum stability and safe positioning of the hydrant**
- **Separate fusion zones enable simple tension-free fusion**
- **Floor plate can be mounted directly onto foundations**
- **Foot unit and elbow make up a homogeneous unit**
- **Large coupler depth for ease of guidance of pipe and construction part**
- **Small annular gap for build-up optimum joining pressure in the fusion zone**
- **Extra wide fusion zones**
- **Cold zones at the front side and in the middle of the coupler**
- **Exposed heating coil for optimum heat transfer onto pipe/construction part**
- **Additional barcode for tracing back the underground fitting (Traceability-Coding)**

Please find our datasheets for downloading on the internet at www.friatec.de