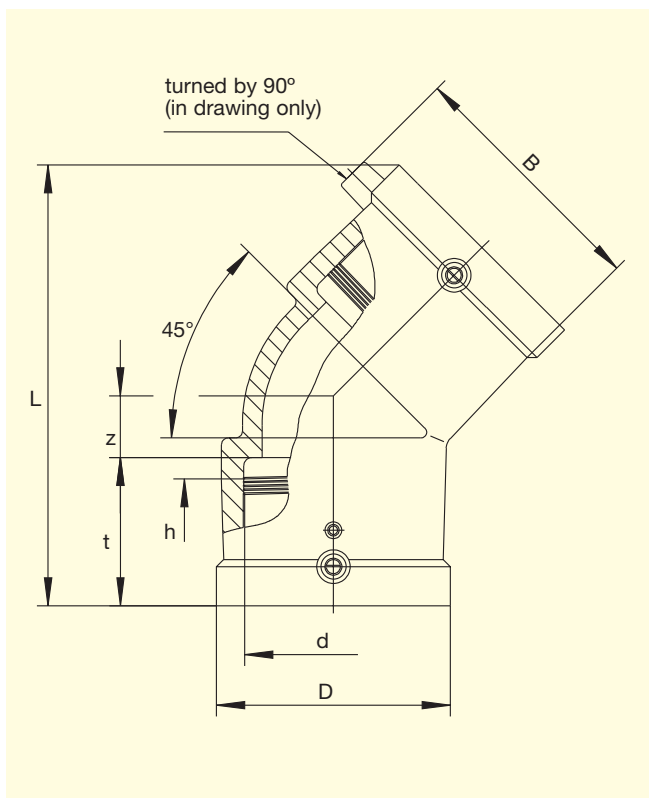


# FRIALEN®-Elbows (Electrofusion) W45°

## PE 100 SDR 11

Maximum working pressure 16 bar (Water) / 10 bar (Gas)



| d   | Order-Ref. | Stock-status | VE | PE   | D   | L   | t     | z    | h    | B   | Weight kg/each |
|-----|------------|--------------|----|------|-----|-----|-------|------|------|-----|----------------|
| 32  | T-612-092  | 1            | 20 | 1000 | 43  | 102 | 44.0  | 8.0  | 21.3 | 60  | 0.067          |
| 40  | T-612 094  | 1            | 13 | 650  | 54  | 120 | 48.5  | 11.0 | 28.7 | 70  | 0.114          |
| 50  | T-612 096  | 1            | 10 | 500  | 70  | 146 | 53.0  | 18.0 | 22.4 | 83  | 0.210          |
| 63  | T-612 098  | 1            | 4  | 200  | 84  | 158 | 55.0  | 20.0 | 32.3 | 97  | 0.297          |
| 75  | T-612 100  | 1            | 14 | 252  | 96  | 198 | 70.0  | 29.0 | 37.5 | 111 | 0.516          |
| 90  | T-612 102  | 1            | 8  | 144  | 115 | 232 | 79.0  | 35.0 | 45.0 | 128 | 0.806          |
| 110 | T-612 104  | 1            | 10 | 80   | 138 | 265 | 85.0  | 41.0 | 50.3 | 150 | 1.320          |
| 125 | T-612 106  | 1            | 10 | 80   | 157 | 279 | 87.0  | 46.0 | 43.5 | 167 | 1.771          |
| 160 | T-615 275  | 1            | 4  | 32   | 207 | 377 | 92.0  | 88.0 | 43.5 | 210 | 4.408          |
| 180 | T-615 687  | 1            | 3  | 24   | 228 | 382 | 97.0  | 83.0 | 65.0 | 229 | 4.606          |
| 225 | T-615 688  | 1            | 1  | 8    | 280 | 450 | 112.0 | 98.0 | 66.0 | 281 | 8.290          |

FRIALEN®-Safety Fittings can be fused to pipes of SDR stages 11 to 17.6  
 DVGW-Registration Nos. DV-8601AU2248 and DV-8606AU2249

Please turn over for important information regarding application of the **FRIALEN®-Elbows W45°**.



# **FRIALEN<sup>®</sup>-Elbows (Electrofusion) W45°**

## **PE 100 SDR 11**

Maximum working pressure 16 bar (Water) / 10 bar (Gas)

### **Areas of Application**

The FRIALEN<sup>®</sup>-Elbow W45° is used for all changes of direction in HDPE pipes.

### **Assembly Instructions**

The fusion of the pipe ends with the FRIALEN<sup>®</sup>-Elbows W45° takes place by FRIALEN<sup>®</sup>-fusing – leakproof and longitudinally strong.

The pipe ends are prepared according to the general installation instructions (see Assembly Instructions for FRIALEN<sup>®</sup>-Safety Fittings for house connections and distribution pipes up to d 225). This involves removing the oxide skin and cleaning the pipe ends.

### **Eleven good reasons for using the FRIALEN<sup>®</sup>-Elbows W45°**

- Large coupler depth for ease of pipe guiding (no holding clamps required)
- Extra wide fusion zones
- Maximum stability through great wall thickness
- Cold zones at the front side and in the middle of the coupler
- Exposed heating coil for direct heat transmission to the pipe
- Small annular gap for build-up of optimum joining pressure in the fusion zone
- Contacts safe to touch
- Fusion indicator for visual fusion control
- Durable batch marking
- Individually wrapped for dirt protection
- Additional barcode for tracing back the underground fitting (Traceability-Coding).

Please find our datasheets for downloading on the internet at [www.friatec.com](http://www.friatec.com)

**For further information, please call our FRIALEN<sup>®</sup> customer service staff and specialist advisers.**