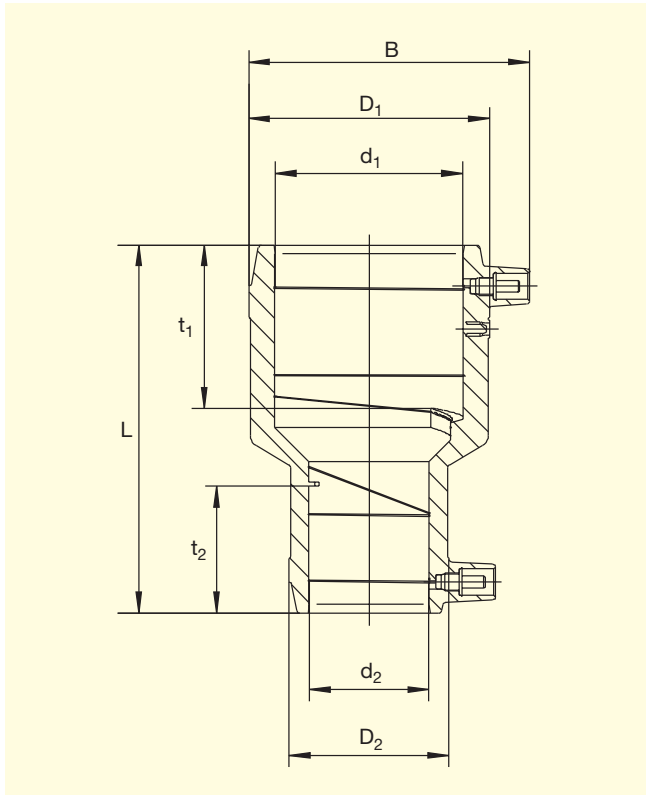


FRIALEN® Electrofusion Reducers MRI

PE 3408 SDR 11

Maximum working pressure 160 psi (water) / 100 psi (gas)



| d_1 | d_2 | Order Ref. | Stock-status | VE | PE | D_1 (inch) | D_2 (inch) | B (inch) | L (inch) | t_1 (inch) | t_2 (inch) | Weight kg/each |
|-----------|---------|------------|--------------|----|------|-----------------|-----------------|-------------|-------------|-----------------|-----------------|-------------------|
| 1 CTS | 1/2 CTS | T-616 254 | 1 | 40 | 2000 | 1.661 | 1.110 | 2.289 | 3.465 | 1.516 | 1.181 | 0.056 |
| 1 IPS | 1/2 CTS | T-616 253 | 1 | 40 | 2000 | 1.858 | 1.110 | 2.482 | 3.465 | 1.516 | 1.181 | 0.061 |
| 1 1/4 IPS | 1 CTS | T-613 252 | 1 | | | 2.213 | 1.661 | 2.835 | 3.858 | 1.673 | 1.535 | 0.089 |
| 2 IPS | 1 CTS | T-613 251 | 1 | 10 | 500 | 3.118 | 1.661 | 3.652 | 4.921 | 2.165 | 1.535 | 0.191 |

FRIALEN®-Safety Fittings can be fused to pipes of SDR stages 11 to 17.6

Please turn over for important information regarding application of **FRIALEN®** Electrofusion Reducers MRI.



FRIALEN[®] Electrofusion Reducers MRI

PE 3408 SDR 11

Maximum working pressure 160 psi (water) / 100 psi (gas)

Areas of Application

The FRIALEN[®] Electrofusion Reducer MRI is applied for immediate pipe reduction within the pipe system.

Assembly Instructions

Fusing of pipe ends with the FRIALEN[®] Electrofusion Reducers MRI takes place by FRIALEN[®] fusion – leakproof and longitudinally strong.

The pipe ends are prepared according to the general installation instructions (note “Assembly Instructions” for FRIALEN[®] Safety Fittings for house connections and distribution pipes (Remove oxide skin/clean)).

Eleven good reasons for using the FRIALEN[®] Electrofusion Reducers MRI

- Large coupler depth for ease of pipe guiding (no holding clamps required)
- Extra wide fusion zones
- Maximum stability through great wall thickness
- Cold zones at the front side and in the middle of the coupler
- Exposed heating coil for direct heat transmission to the pipe
- Small annular gap for build-up of optimum joining pressure in the fusion zone
- Contacts safe to touch
- Fusion indicator for visual fusion control
- Durable batch marking
- Individually wrapped for dirt protection
- Additional barcode for tracing back the underground fitting (Traceability-Coding).

Please find our datasheets for downloading on the internet at www.friatec.com

For further information, please call our FRIALEN[®] customer service staff and specialist advisers.