



- Overview
- Butt Fittings Overview
- Butt Fittings
- Saddle Fittings Overview
- Saddle Fittings
- Socket Fittings Overview
- Socket Fittings
- PE Adapters Overview
- Flange Adapters
- MJ Adapters
- Equipment Overview
- Fusion Equipment



Conventional Fusion Products & Equipment

The Right Connection

1-800-654-3872

1-405-273-6302

www.centralplastics.com

Conventional Fusion: General Product Information

Due to the unique material characteristics of polyethylene, heat fusion allows successful joining of pipe and fittings into a single leak-free system with no connections to corrode or loosen.

“The basic principle of heat fusion (in this case butt, saddle or socket fusion) is to heat and melt the joint surfaces and force the melted surfaces together, which causes the materials to mix and fuse into a monolithic joint.” **AWWA PE Pipe - Design and Installation, Manual of Water Supply Practices M55**

Central Plastics has been actively involved in the research and development of innovative joining methods for polyethylene piping systems since the early 1960's. Recognized as an industry leader in the world of manufactured Polyethylene (PE) fittings; Central Plastics offers our customers the broadest and most complete line of Butt, Saddle, and Socket fusion fittings. All designed, manufactured and tested in Shawnee, Oklahoma. under ISO 9001 standards and serviced by an experienced staff of the most knowledgeable and customer friendly professionals you could hope to find.

Bringing unrivaled knowledge, experience and manufacturing capabilities to industries throughout the world, Central Plastics delivers innovative and cost effective pipe joining solutions right to your door step. Servicing the polyethylene fitting needs in natural gas, potable water, municipal wastewater, oil & gas gathering, mining, landfill, telecommunications, geothermal, irrigation and other industries; Central Plastics is helping to ensure that your conventional fusion job is done right - the first time.

With an extensive and state of the art in-house testing facility, Central Plastics performs the following tests on all of our Butt, Saddle, and Socket fittings.

1. ASTM D 1599 - Minimum Hydraulic Burst Pressure Test.
2. ASTM D 1598 -Sustained Pressure Test Results.
3. ASTM D638 Tensile Strength Test.
4. PE3408/PE4710 Fittings are tested to the requirements of AWWA C906 (where applicable)
5. PE3408/PE4710 FM Tested and Approved (where applicable)



The connection since 1955[®]

The Right Connection

1-800-654-3872

1-405-273-6302

www.centralplastics.com

Conventional Fusion: Allowable Operating Pressures

The following charts represent the **Allowable Operating Pressure** for fittings manufactured from three grades of polyethylene resin used in our products. These values represent the most common **Standard Dimension Ratios (SDR)** used in the industries that we service and are further divided based on the design factors determined by each of their related governing authorities.

- .32 for natural gas distribution systems regardless of resin used
- .50 for water applications for PE3408 resins
- .63 for water applications for PE4710 resins

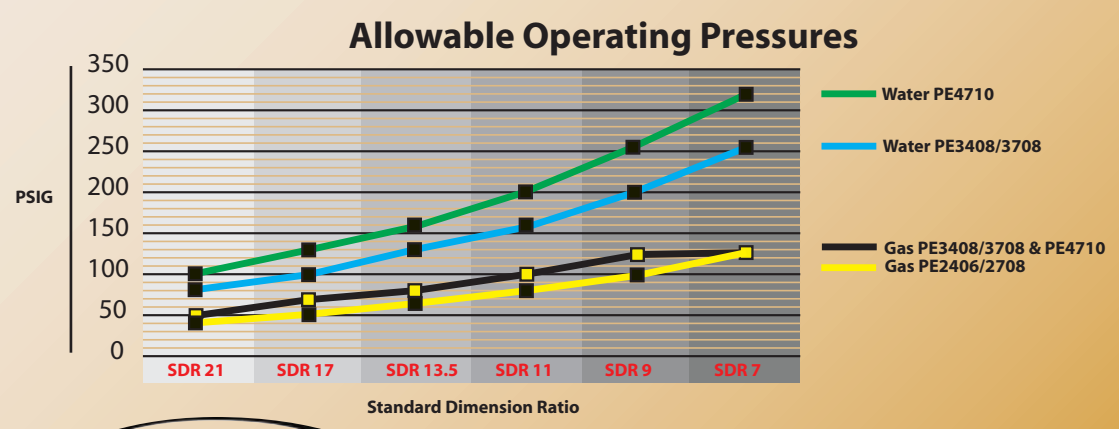
} All design factors are assuming a standard operating temperature of 73° F

NOTE: For other fluids, temperatures, chemicals and environmental considerations additional design factors may be required. (i.e. Canadian gas utilities use a .40 design factor for their natural gas applications.)

DOT Allowable Operating Pressure for Natural Gas Plastic Pipe Systems			
.32 design factor @ 73° F			
SDR	PE2406/PE2708 DOT Allowable	PE3408 DOT Allowable	PE4710 DOT Allowable
21	40	50	50
17	50	64	64
13.5	64	80	80
11	80	100	100
9	100	125**	125**
7	125**	125**	125**

Allowable Operating Pressure for Municipal & Industrial Applications		
SDR	PE3408 .50 design factor @ 73° F	PE4710 .63 design factor @ 73° F
21	80	100
17	100	130
13.5	130	160
11	160	200
9	200	255
7	265	335

** DOT Regulations only allow a 125 psig max for natural gas plastic pipe systems regardless of the materials Maximum Allowable Operating Pressure (MAOP).



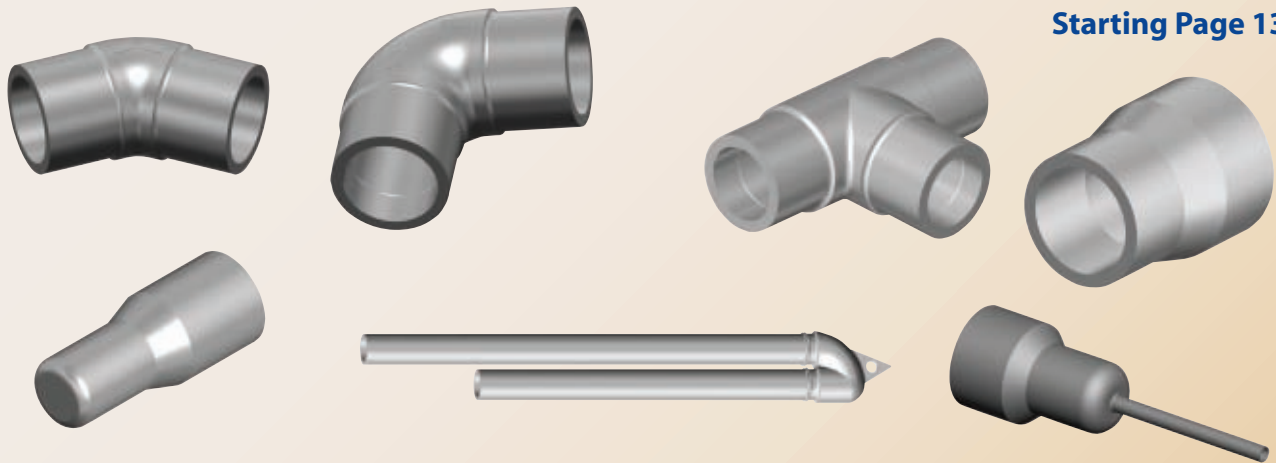
The Right Connection

NOTE: Operating Pressure for Conventional Tapping Tees and Conventional Branch Saddles are determined by the material used, the outlet SDR and the governing regulations.

1-800-654-3872
1-405-273-6302
www.centralplastics.com

Conventional Fusion: Butt Fusion Fittings

Starting Page 13



Central's Molded PE2406/PE2708 Butt fittings are manufactured and tested to the requirements of ASTM D2513 and ASTM D3261 and are sized for use with pipe conforming to ASTM D2513 and with Butt fittings conforming to ASTM D3261. Central's PE2406/PE2708 Butt fittings are molded from a virgin yellow medium density resin in accordance with the material specifications listed in ASTM D3350 with a designation of PE2406/PE2708. All Central Plastics PE2406/PE2708 Butt Fittings are compatible for heat fusion with any pipe or fitting manufactured from a like or similar resin. Central's PE2406/PE2708 fittings have been qualified for fusion using PPI generic fusion procedures.

Central's Molded PE3408/PE4710 Butt fittings are manufactured and tested to the requirements of ASTM D2513, ASTM D3261, and ANSI/AWWA C906 for use with outside diameter controlled pipe and fittings conforming to ASTM D2513, ASTM D3035, ASTM F-714. Central's PE3408/PE4710 Butt fittings are molded from an NSF listed resin in accordance with the material specifications listed in ASTM D3350 with

a designation of PE3408/PE4710. Central Plastics PE3408/PE4710 Butt fittings are manufactured and tested to the requirements of ASTM D2513 and ASTM D3261 (where applicable) and are compatible for heat fusion with any pipe and or fitting manufactured from a like or similar resin. Central's PE3408/PE4710 fittings have been qualified for fusion using PPI generic fusion procedures.

FEATURES:

- Pressure rated for natural gas and potable water applications.
- IAPMO Approved (where applicable).
- CSA Approved (where applicable).
- PE3408/PE4710 FM Approved (where applicable).
- PE3408/PE4710 fittings are tested to the requirements of AWWA C906.
- Can be joined by butt, socket, electrofusion or mechanical methods.
- Can be heat fused with all conventional and electrofusion fusion methods.



The connection since 1955®

The Right Connection

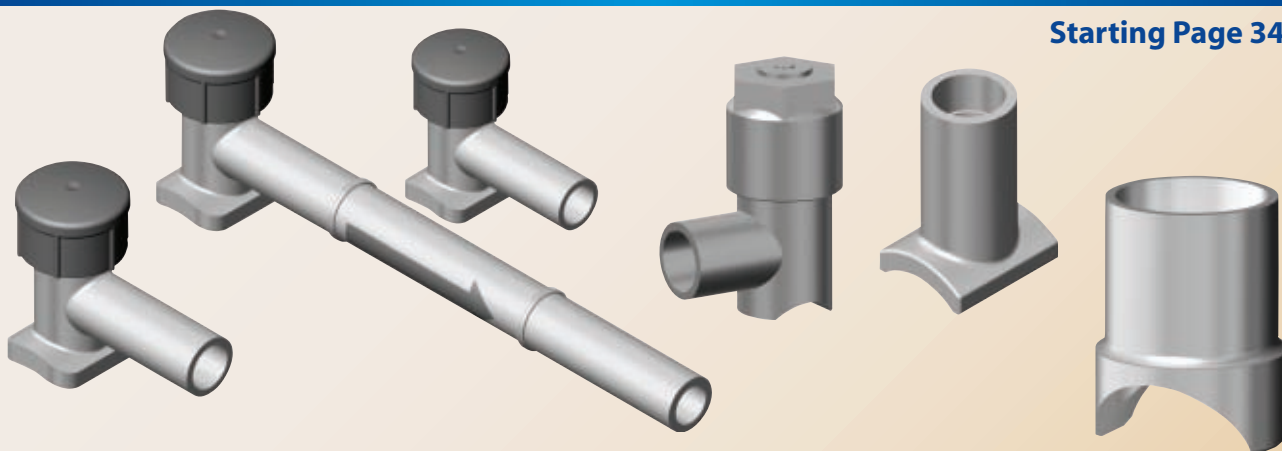
1-800-654-3872

1-405-273-6302

www.centralplastics.com

Conventional Fusion: Saddle Fusion Fittings

Starting Page 34



Central's Molded PE2406/PE2708 Side-Wall Tapping Tees, Service Saddles, and Branch Saddles are manufactured and tested to the requirements of ASTM D2513 and ASTM D3261 and are sized for use with pipe conforming to ASTM D2513 and with Butt fittings conforming to ASTM D3261 as applicable. Central's PE2406/PE2708 Side-Wall Tapping Tees, Service Saddles and Branch Saddles are molded from a virgin yellow medium density resin in accordance with the material specifications listed in ASTM D3350. All Central Plastic's PE2406/PE2708 Side-Wall Tapping Tees, Service Saddles and Branch Saddles are compatible for side-wall fusion with any pipe or fitting manufactured from a like or similar resin. Central's PE2406/PE2708 fittings have been qualified for fusion using PPI generic fusion procedures.

Central's Molded PE3408/PE4710 Side-Wall Tapping Tees, Service Saddles, and Branch Saddles are manufactured and tested to the requirements of ASTM D2513, ASTM D3261 and ANSI/AWWA C906 for use with outside diameter controlled pipe and fittings conforming to ASTM D2513, ASTM D3035, ASTM F-714 and with Butt fittings conforming to ASTM D3261. Central's PE3408/PE4710

Side-Wall Tapping Tees, Service Saddles and Branch Saddles are molded from an NSF listed resin in accordance with the material specifications listed in ASTM D3350. All Central Plastic's PE3408/PE4710 Side-Wall Tapping Tees, Service Saddles, and Branch Saddles are manufactured and tested to the requirements of ASTM D2513 and ASTM D3261 (where applicable) and are compatible for side-wall fusion with any pipe and or fitting manufactured from a like or similar resin. Central's PE3408/ PE4710 fittings have been qualified for fusion using PPI generic fusion procedures.

AVAILABLE FEATURES:

- Pressure rated for natural gas and potable water applications.
- IAPMO Approved (where applicable).
- CSA Approved (where applicable).
- PE3408/PE4710 are tested to the requirements of AWWA C906.
- Can be heat fused to pipe wall using conventional side-wall fusion methods.
- Outlets can be heat fused using conventional and electrofusion fusion methods.



The connection since 1955®

The Right Connection

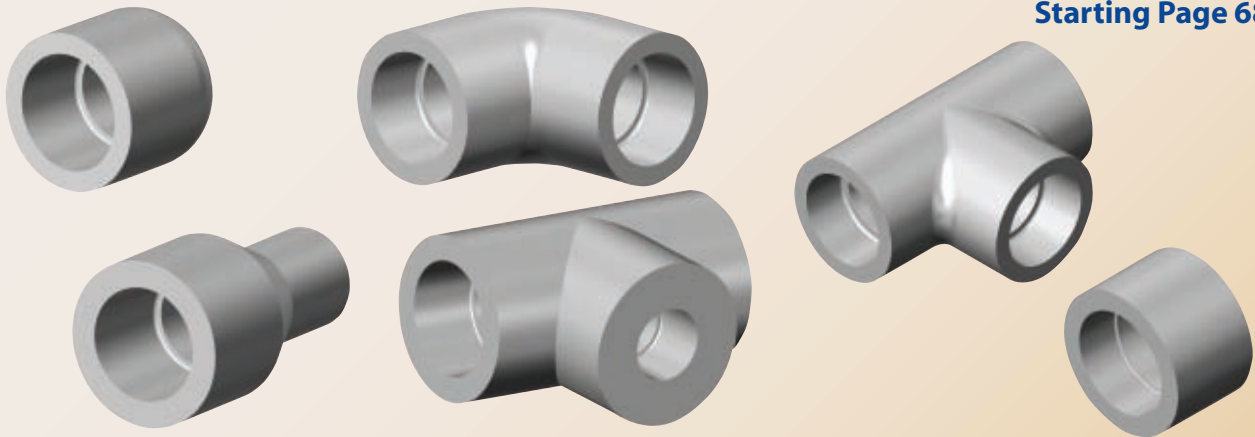
1-800-654-3872

1-405-273-6302

www.centralplastics.com

Conventional Fusion: Socket Fusion Fittings

Starting Page 68



Central's Molded PE2406/PE2708 Socket Fusion fittings are manufactured and tested to the requirements of ASTM D2513 and ASTM D2683 and are sized for use with pipe conforming to ASTM D2513. Central's PE2406/PE2708 Socket fittings are molded from a virgin yellow medium density resin in accordance with the material specifications listed in ASTM D3350. All Central Plastic's PE2406/PE2708 Socket Fusion Fittings are compatible for heat fusion with any pipe or fitting manufactured from a like or similar resin. Central's PE2406/PE2708 fittings have been qualified for fusion using ASTM D2657 generic fusion procedures.

Central's Molded PE3408/PE4710 Socket Fusion fittings are fully manufactured and tested to the requirements of ASTM D2513 and ASTM D2683 and are manufactured for use with outside diameter controlled pipe and fittings conforming to ASTM D2513 and ASTM F-714. Central's PE3408/PE4710 Socket fittings are molded from a virgin black high density resin in accordance with the material specifications listed in ASTM D3350. All Central Plastic's PE3408/PE4710 Fusion fittings are manufactured and tested to the re-

quirements of ASTM D2513 and ASTM D2683 and are compatible for heat fusion with any pipe and or fitting manufactured from a like or similar resin. Central's PE3408/PE4710 fittings have been qualified for fusion using ASTM D2657 generic fusion procedures.

AVAILABLE FEATURES:

- Pressure ratings up to SDR7 on most sizes.
- IAPMO Approved (where applicable).
- CSA Approved (where applicable).
- Can be used with all socket fusion methods.



The Right Connection

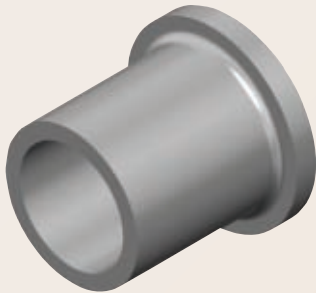
1-800-654-3872

1-405-273-6302

www.centralplastics.com

Conventional Fusion: PE Adapters

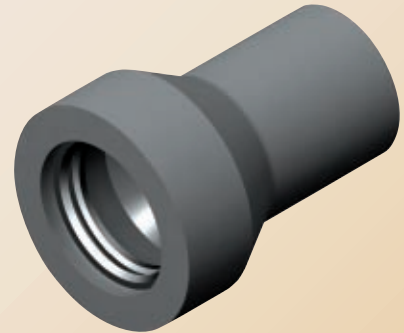
Starting Page 80



Flange Adapter



MJ Adapter



Gasketed Adapter

Central's PE3408/PE4710 Flange Adapters and MJ Adapters are manufactured and tested to the requirements of ASTM D3261 and ASTM D3261 and ANSI/AWWA C906 for use with pipe conforming to ASTM D2513/3035, F-714 and with Butt fittings conforming to ASTM D3261 as applicable. Central's PE3408/PE4710 Flange Adapters and MJ Adapters are molded from an NSF listed resin in accordance with the material specifications listed in ASTM D3350. All Central Plastic's PE3408/PE4710 Flange Adapters and MJ Adapters are compatible for heat fusion with any pipe or fitting manufactured from a like or similar resin.

FEATURES:

- Pressure rated for municipal and trial applications.
- PE3408/PE4710 FM Approved (where applicable).
- PE3408/PE4710 fittings are tested to the requirements of AWWA C906.
- Can be heat fused using conventional and electrofusion fusion methods.
- Can be beveled for butterfly valves when requested.
- MJ Adapters can be provided with stiffeners when requested.



The connection since 1955[®]

The Right Connection

1-800-654-3872

1-405-273-6302

www.centralplastics.com

Conventional Fusion: General Equipment Information

Starting Page 92

Central Plastics has been a manufacturer of polyethylene fusion equipment since the early days of plastic product development and to this day we continue to manufacture a line of quality fusion equipment. Our equipment includes:

BS-4 BUTT FUSION MACHINE – capable of butt fusing 1/2" thru 4" pipe and fittings. This compact machine is manufactured using structural aluminum castings for stability, yet is still light weight - ONLY 34 POUNDS. Extra wide grooved pipe clamps and liners help to assure alignment on coiled and out-of-round pipe. The precision ground guide bars are in the centerline of pipe to maintain equal load balance and proper alignment. Clamp knobs are stainless steel with thrust bearings. A pressure control knob allows operator to lock position during cooling time for better joint integrity.

BS-4 ELECTRIC TRIMMER with adjustable trimming stops. The chain driven 110 or 220 volt BS-4 Electric Trimmer utilizes a 1/2 hp, 620 watt, 5.63 amp motor. The main spindle turns on sealed ball bearings for longer life. Trimmer blades are made of hardened stainless steel for longer wear, better edge and rust free operation.

MANUAL TRIMMER – is typically used in conjunction with the Central Gas Fired Heating Tool and allows quality fusion in remote areas. The manual trimmer can be used in lieu of electric trimmer.

BUTT, SOCKET AND SADDLE HEATING TOOLS:

- Versatile heating tools capable of Socket, Saddle or Butt Fusion

- Interchangeable Heater Faces – Heating tools are interchangeable with most conventional heater faces currently in the field.
- Central Quality – Central's heater face coating is designed to provide durability and long wear.
- Portable – Lightweight for easy handling.
- Recessed Thermometer – Easy to read dial thermometer recessed in the handle.
- Gas Fired Tools – Economical tools for quick line repairs. No generator is required – simply heat to desired temperature with a conventional gas torch.

AVAILABLE FUSION EQUIPMENT ACCESSORIES

- Butt Fusion Heater Faces
- Socket Heater Faces
- Tapping Tee Faces
- High-Volume Multi-Saddle Faces
- Branch Saddle Faces
- BS-4 Butt Fusion Machine Liner Kits
- Special Liner Kits
- Socket Fusion Depth Gauges
- Socket Fusion Cold Rings
- Socket Fusion Fitting Holders
- Socket Fusion Chamfer Tools
- Squeeze-Off Tools

On March 8, 2007 Central Plastics officially expanded the breadth of our fusion equipment product offering through the acquisition of

Connectra Fusion Technologies, LLC

The inclusion of Connectra fusion products will now allow Central Plastics to offer a more comprehensive line of fusion equipment with Butt Fusion capabilities up to 42".



The connection since 1955[®]

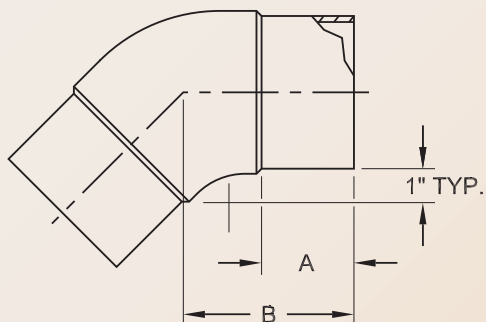
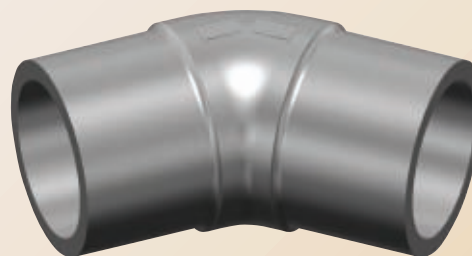
The Right Connection

1-800-654-3872

1-405-273-6302

www.centralplastics.com

Butt Fittings: 45° Butt Elbow



45° IPS ELBOW DIMENSIONS

Nominal Size	A	B	L
3" IPS	3.13	5.00	*
4" IPS	3.00	5.00	*
6" IPS	4.38	7.00	*
8" IPS	6.00	11.00	*
10" IPS	6.00	13.25	*
12" IPS	7.50	15.75	*

(PE2406/PE2708) 45° IPS BUTT ELBOWS

Size	SDR	Part Number	Pack. Qty.	Wt.	CSA
3" IPS	DR 11/11.5	6910559	10	1.79	-
4" IPS	DR 13.5	6911526	10	2.52	-
4" IPS	DR 11/11.5	6911483	10	2.67	YES
6" IPS	DR 13.5	6910456	10	6.50	-
6" IPS	DR 11/11.5	691060625000	2	7.15	YES
8" IPS	DR 13.5	6910568	2	18.40	YES
8" IPS	DR 11/11.5	6910482	2	20.23	YES
10" IPS	DR 13.5	6910964	1	36.50	-
10" IPS	DR 11	6910954	1	36.50	-
12" IPS	DR 13.5	6910967	1	61.50	-
12" IPS	DR 11	6910960	1	61.50	-



The connection since 1955[®]

The Right Connection

1-800-654-3872

1-405-273-6302

www.centralplastics.com

Butt Fittings: 45° Butt Elbow

(PE3408/PE4710) 45° IPS BUTT ELBOWS

Size	SDR	Part Number	Pack. Qty.	Wt.	AWWA
3" IPS	DR 17	10004085	10	1.57	YES
3" IPS	DR 11	10002941	10	1.80	YES
3" IPS	DR 9/9.3	10004087	10	1.62	YES
4" IPS	DR 17	10004091	10	2.64	YES
4" IPS	DR 11	10002942	10	2.90	YES
4" IPS	DR 9/9.3	10004094	10	2.79	YES
6" IPS	DR 17	10004098	2	7.43	YES
6" IPS	DR 11	10002943	2	7.09	YES
6" IPS	DR 9	10004101	2	7.14	YES
8" IPS	DR 17	10004106	2	19.60	YES
8" IPS	DR 11	10002944	2	20.90	YES
8" IPS	DR 9	10004107	2	19.90	YES
10" IPS	DR 17	10004073	1	38.00	YES
10" IPS	DR 11	10004070	1	41.50	YES
10" IPS	DR 9	10004074	1	47.50	YES
12" IPS	DR 17	10004082	1	60.00	YES
12" IPS	DR 11	10004078	1	64.00	YES
12" IPS	DR 9	10004083	1	67.50	YES



The connection since 1955®

The Right Connection

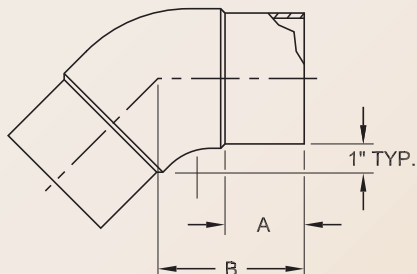
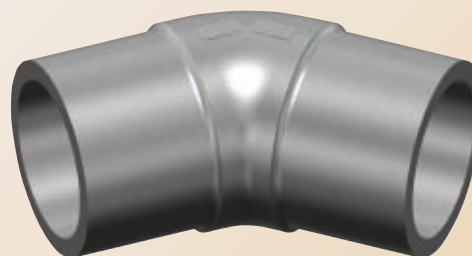
Call for availability of other sizes and dimensions.

1-800-654-3872

1-405-273-6302

www.centralplastics.com

Butt Fittings: 45° Butt Elbow (DIPS)



45° DIPS ELBOW DIMENSIONS

Nominal Size	A	B	L
4" DIPS	4.10	6.05	*
6" DIPS	5.10	7.16	*
8" DIPS	5.17	8.32	*
10" DIPS	6.00	13.25	*
12" DIPS	7.50	15.88	*

(PE3408/PE4710) 45° DIPS BUTT ELBOWS

Size	SDR	Part Number	Pack. Qty.	Wt.	AWWA
4" DIPS	DR 17	call	-	-	-
4" DIPS	DR 11	10004088	10	3.45	YES
4" DIPS	DR 9	call	-	-	-
6" DIPS	DR 17	call	-	-	-
6" DIPS	DR 11	10004095	2	8.88	YES
6" DIPS	DR 9	call	-	-	-
8" DIPS	DR 17	call	-	-	-
8" DIPS	DR 11	10004103	2	14.60	YES
8" DIPS	DR 9	call	-	-	-
10" DIPS	DR 17	call	-	-	-
10" DIPS	DR 11	10004069	1	43.00	YES
10" DIPS	DR 9	call	-	-	-
12" DIPS	DR 17	call	-	-	-
12" DIPS	DR 11	10004076	1	68.00	YES
12" DIPS	DR 9	call	-	-	-



The connection since 1955®

The Right Connection

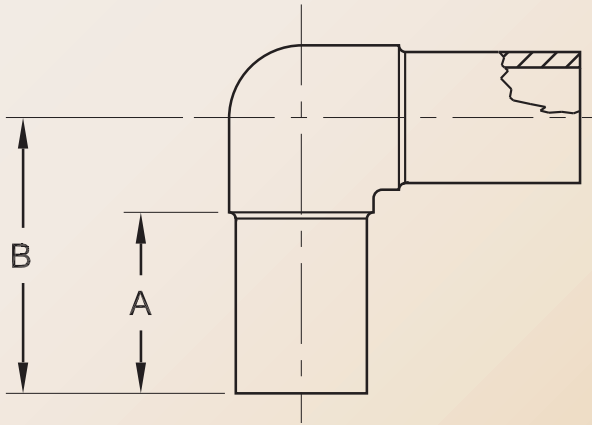
Call for availability of other sizes and dimensions.

1-800-654-3872

1-405-273-6302

www.centralplastics.com

Butt Fittings: 90° Butt Elbow



90° CTS & IPS ELBOW DIMENSIONS

Nominal Size	A	B	L
3/4" IPS	2.63	4.00	*
1" CTS	2.25	3.69	*
1" IPS	2.63	4.00	*
1-1/4" IPS	2.63	4.00	*
1-1/2" IPS	2.63	4.00	*
2" IPS	2.81	4.50	*
3" IPS	3.00	5.13	*
4" IPS	3.00	5.75	*
6" IPS	4.38	9.00	*
8" IPS	6.00	12.00	*
10" IPS	6.00	13.25	*
12" IPS	7.50	15.88	*



The connection since 1955®

The Right Connection

Call for availability of other sizes and dimensions.

1-800-654-3872

1-405-273-6302

www.centralplastics.com

Butt Fittings: 90° Butt Elbow



(PE 2406/PE2708) 90° CTS & IPS BUTT ELBOWS

Size	SDR	Part Number	Pack Qty.	Wt.	CSA	IAPMO
3/4" IPS	DR 11	6916262	100	0.09	YES	-
3/4" IPS	DR 9.3	6910068	100	0.14	YES	YES
1" CTS	0.101 WALL	6910014	100	0.13	-	-
1" IPS	DR 11	6911354	50	0.13	YES	-
1" IPS	DR 9.3	6910067	100	0.19	-	-
1-1/4" IPS	DR 10	6911355	50	0.26	YES	-
1-1/4" IPS	DR 9.3	6910056	40	0.29	YES	YES
1-1/2" IPS	DR 11	6911356	10	0.34	YES	-
1-1/2" IPS	DR 9.3	6910265	10	0.39	-	YES
2" IPS	DR 11	6912133	8	0.68	YES	YES
3" IPS	DR 11/11.5	6911433	10	1.64	YES	YES
4" IPS	DR 13.5	6911424	10	3.07	-	-
4" IPS	DR 11/11.5	6912158	1	3.11	-	-
4" IPS	DR 11/11.5	6911423	1	3.09	YES	YES
6" IPS	DR 13.5	6910455	1	10.00	-	-
6" IPS	DR 11/11.5	69106062300	1	10.00	YES	YES
8" IPS	DR 13.5	6910499	1	20.90	YES	-
8" IPS	DR 11.5/11.5	6910480	1	20.90	YES	-
10" IPS	DR 13.5	6910963	1	34.00	-	-
10" IPS	DR 11	6910952	1	36.50	-	-
12" IPS	DR 13.5	6910966	1	55.50	-	-
12" IPS	DR 11	6910958	1	57.30	-	-



The connection since 1955®

The Right Connection

Call for availability of other sizes and dimensions.

1-800-654-3872

1-405-273-6302

www.centralplastics.com

Butt Fittings: 90° Butt Elbow

(PE3408/PE4710) 90° IPS BUTT ELBOWS

Size	SDR	Part Number	Pack Qty.	Wt.	AWWA
3/4" IPS	DR 11	10004109	100	0.15	YES
3/4" IPS	DR 9.3	10004110	100	0.15	YES
1" IPS	DR 11	10004111	100	0.14	YES
1" IPS	DR 9.3	10003813	100	0.19	YES
1-1/4" IPS	DR 11	10002945	100	0.26	YES
1-1/4" IPS	DR 9.3	10004112	100	0.29	YES
1-1/2" IPS	DR 11	10004113	40	0.34	YES
1-1/2" IPS	DR 9.3	10004114	80	0.37	YES
2" IPS	DR 17	10004130	10	0.59	YES
2" IPS	DR 11	10002946	10	0.74	YES
2" IPS	DR 9/9.3	10004131	10	0.66	YES
3" IPS	DR 17	10004132	10	1.54	YES
3" IPS	DR 11	10002947	10	1.75	YES
3" IPS	DR 9/9.3	10004133	10	1.67	YES
4" IPS	DR 17	10003465	10	3.15	YES
4" IPS	DR 11	10001630	10	3.61	YES
4" IPS	DR 9/9.3	10004137	10	3.12	YES
6" IPS	DR 17	10004143	2	9.96	YES
6" IPS	DR 11	10002948	2	9.76	YES
6" IPS	DR 9/9.3	10004148	2	9.37	YES
6" IPS	DR 9	10004146	2	9.75	YES
8" IPS	DR 17	10004153	2	21.10	YES
8" IPS	DR 11	10002949	2	21.40	YES
8" IPS	DR 9	10004155	2	20.20	YES
10" IPS	DR 17	10004119	1	33.00	YES
10" IPS	DR 11	10004116	1	35.80	YES
10" IPS	DR 9	10004121	1	43.50	YES
12" IPS	DR 17	10004127	1	56.50	YES
12" IPS	DR 11	10003853	1	59.70	YES
12" IPS	DR 9	10003928	1	71.00	YES



The connection since 1955®

The Right Connection

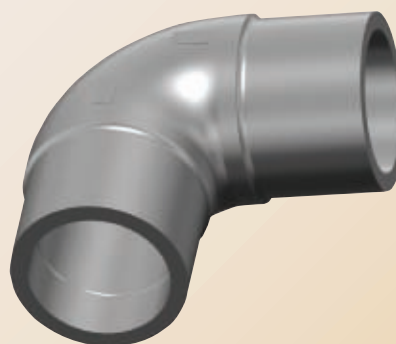
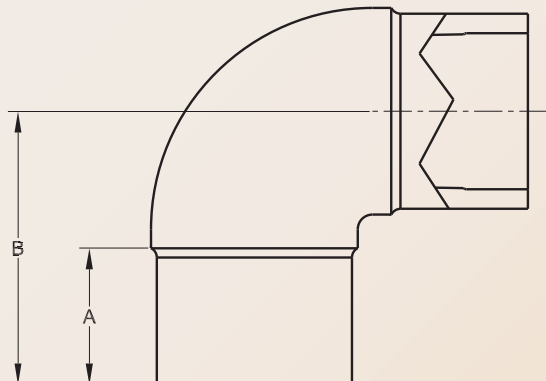
Call for availability of other sizes and dimensions.

1-800-654-3872

1-405-273-6302

www.centralplastics.com

Butt Fittings: 90° Butt Elbow (DIPS)



90° DIPS ELBOW DIMENSIONS

Nominal Size	A	B	L
4" DIPS	4.10	7.82	*
6" DIPS	5.10	9.67	*
8" DIPS	5.17	11.58	*
10" DIPS	6.00	13.25	*
12" DIPS	7.50	15.88	*

(PE3408/PE4710) 90° DIPS BUTT ELBOWS

Size	SDR	Part Number	Pack Qty.	Wt.	AWWA
4" DIPS	DR 17	call	-	-	YES
4" DIPS	DR 11	10004134	10	4.30	YES
4" DIPS	DR 9	call	-	-	-
6" DIPS	DR 17	10004140	2	10.50	YES
6" DIPS	DR 11	10004139	2	10.50	YES
6" DIPS	DR 9	call	-	-	-
8" DIPS	DR 17	10004150	-	-	YES
8" DIPS	DR 11	10004149	2	19.40	YES
8" DIPS	DR 9	call	2	21.00	YES
10" DIPS	DR 17	call	-	-	-
10" DIPS	DR 11	10004115	1	39.00	YES
10" DIPS	DR 9	call	-	-	-
12" DIPS	DR 17	call	-	-	-
12" DIPS	DR 11	10004123	1	62.50	YES
12" DIPS	DR 9	call	-	-	-



The connection since 1955®

The Right Connection

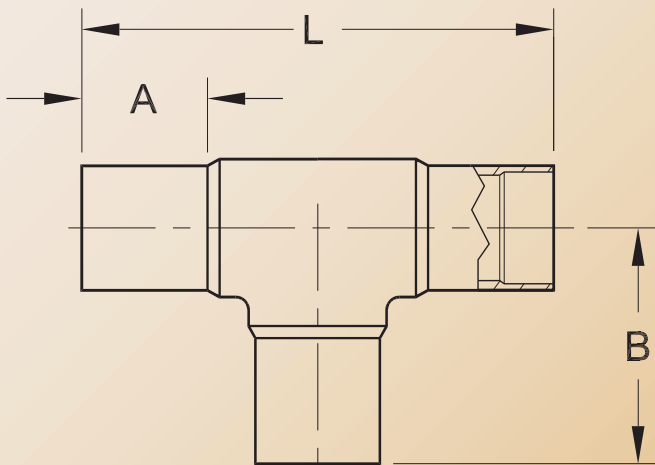
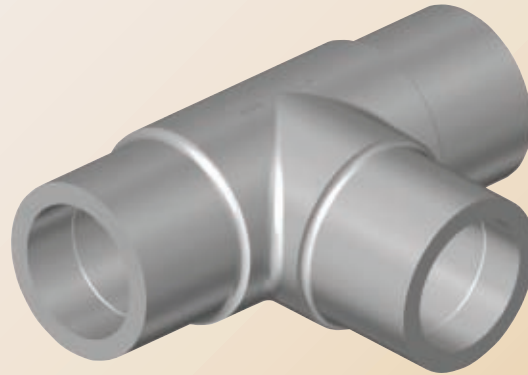
Call for availability of other sizes and dimensions.

1-800-654-3872

1-405-273-6302

www.centralplastics.com

Butt Fittings: Butt Tee



**CTS & IPS BUTT TEE
DIMENSIONS**

Nominal Size	A	B	L
3/4" CTS	1.75	2.85	5.70
3/4" IPS	1.75	3.06	6.12
1" CTS	2.25	3.62	7.25
1" IPS	1.75	3.19	6.38
1-1/4" IPS	1.88	3.38	6.76
1-1/2" IPS	2.30	4.25	8.50
2" IPS	2.54	4.61	9.28
3" IPS	2.90	5.13	10.26
4" IPS	2.90	5.60	11.20
6" IPS	4.38	9.00	18.00
8" IPS	6.00	12.00	24.00
10" IPS	6.00	13.25	26.50
10" IPS	6.00	13.25	26.50
12" IPS	7.50	15.88	31.75



The connection since 1955[®]

The Right Connection

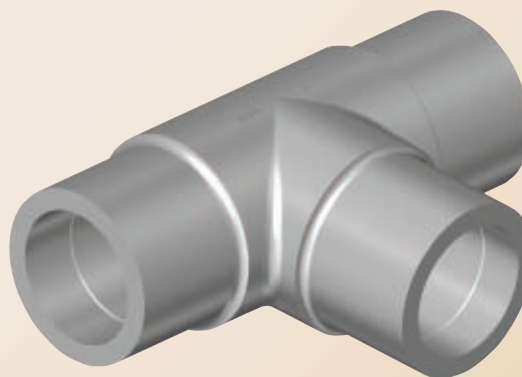
Call for availability of other sizes and dimensions.

1-800-654-3872

1-405-273-6302

www.centralplastics.com

Butt Fittings: Butt Tee



(PE 2406/PE2708) CTS & IPS BUTT TEES

Size	SDR	Part Number	Pack Qty.	Wt.	CSA	IAPMO
1/2" CTS	.090 WALL	6911493	100	0.04	YES	-
3/4" CTS	.090 WALL	6912139	100	0.12	-	-
3/4" IPS	DR 11	6910216	100	0.00	YES	-
1" CTS	0.101 WALL	6911790	50	0.16	-	-
1" IPS	DR 11	6910217	100	0.20	YES	-
1-1/4" IPS	DR 10	6910215	50	0.41	-	-
1-1/2" IPS	DR 11	6910226	40	0.49	YES	-
2" IPS	DR 11	6912135	10	0.88	YES	YES
3" IPS	DR 11/11.5	6911434	10	2.15	YES	YES
4" IPS	DR 13.5	6911441	8	3.50	-	-
4" IPS	DR 11/11.5	6912160	10	4.46	-	YES
4" IPS	DR 11/11.5	6911435	10	4.05	YES	YES
6" IPS	DR 13.5	6910454	1	13.70	-	-
6" IPS	DR 11/11.5	691060624000	1	13.80	YES	YES
8" IPS	DR 13.5	6910569	1	29.30	YES	-
8" IPS	DR 11/11.5	6910476	1	30.30	YES	-
10" IPS	DR 13.5	6910962	1	49.50	-	-
10" IPS	DR 11	6910950	1	51.50	-	-
12" IPS	DR 13.5	6910965	1	81.00	-	-
12" IPS	DR 11	6910956	1	81.00	-	-



The connection since 1955®

The Right Connection

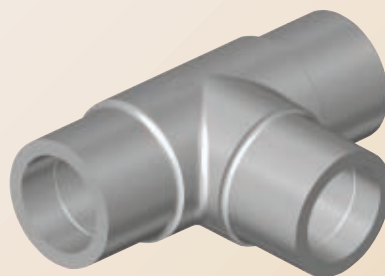
Call for availability of other sizes and dimensions.

1-800-654-3872

1-405-273-6302

www.centralplastics.com

Butt Fittings: Butt Tee



(PE3408/PE4710) CTS & IPS BUTT TEES

Size	SDR	Part Number	Pack Qty.	Wt.	AWWA
1/2" CTS	.090 WALL	10004229	100	0.08	YES
3/4" IPS	DR 11	10003969	100	0.13	YES
1" CTS	.101 WALL	10002906	50	0.18	-
1" IPS	DR 11	10003838	100	0.19	YES
1-1/4" IPS	DR 11	10003815	50	0.42	YES
1-1/2" IPS	DR 11	10004230	40	0.49	YES
1-1/2" IPS	DR 9.3	10003931	40	0.49	YES
2" IPS	DR 11	10002956	10	0.99	YES
2" IPS	DR 9.3/9.3	10004250	10	0.91	YES
3" IPS	DR 17	10004252	10	2.01	YES
3" IPS	DR 11	10002957	10	2.30	YES
3" IPS	DR 9/9.3	10004253	10	2.31	YES
4" IPS	DR 17	10003478	8	4.50	YES
4" IPS	DR 11	10000853	8	4.50	YES
4" IPS	DR 9	10002073	10	5.40	YES
6" IPS	DR 17	10004261	1	13.50	YES
6" IPS	DR 11	10002958	1	14.13	YES
6" IPS	DR 9	10004263	1	15.10	YES
8" IPS	DR 17	10004270	1	29.90	YES
8" IPS	DR 11	10002959	1	30.51	YES
8" IPS	DR 9	10004273	1	28.00	YES
10" IPS	DR 17	10004237	1	46.50	YES
10" IPS	DR 11	10004233	1	56.50	YES
10" IPS	DR 9	10004238	1	59.00	YES
12" IPS	DR 17	10004246	1	74.50	YES
12" IPS	DR 11	10004242	1	79.30	YES
12" IPS	DR 9	10004247	1	82.30	YES



The connection since 1955®

The Right Connection

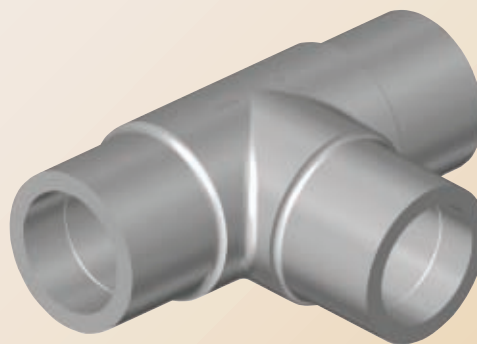
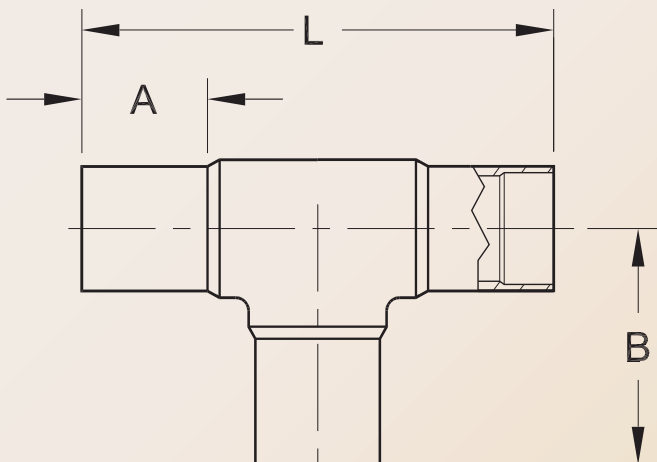
Call for availability of other sizes and dimensions.

1-800-654-3872

1-405-273-6302

www.centralplastics.com

Butt Fittings: Butt Tee (DIPS)



DIPS BUTT TEE DIMENSIONS

Nominal Size	A	B	L
4" DIPS	4.10	7.85	15.63
6" DIPS	5.10	9.67	19.34
8" DIPS	5.17	11.58	23.15
10" DIPS	6.00	13.25	26.50
12" DIPS	7.50	15.88	31.76

(PE3408/PE4710) DIPS BUTT TEES

Size	SDR	Part Number	Pack Qty.	Wt.	AWWA
4" DIPS	DR 17	call	-	-	YES
4" DIPS	DR 11	10004254	5	6.20	YES
4" DIPS	DR 9	call	-	-	YES
6" DIPS	DR 17	10004258	1	15.15	YES
6" IPS	DR 11	10004257	1	15.19	YES
6" DIPS	DR 9	call	-	-	YES
8" DIPS	DR 17	10004267	1	27.70	YES
8" DIPS	DR 11	10004266	1	30.00	YES
8" DIPS	DR 9	call	-	-	YES
10" DIPS	DR 17	call	-	-	YES
10" DIPS	DR 11	10004232	-	53.98	YES
10" DIPS	DR 9	call	-	-	YES
12" DIPS	DR 17	call	-	-	YES
12" DIPS	DR 11	10004240	1	88.00	YES
12" DIPS	DR 9	call	-	-	YES



The connection since 1955®

The Right Connection

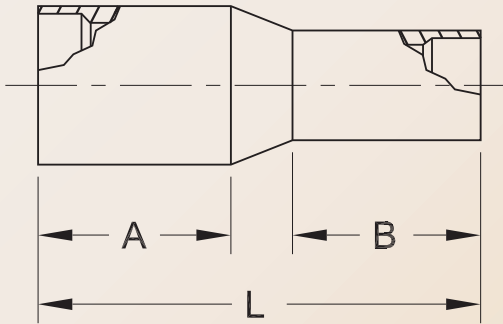
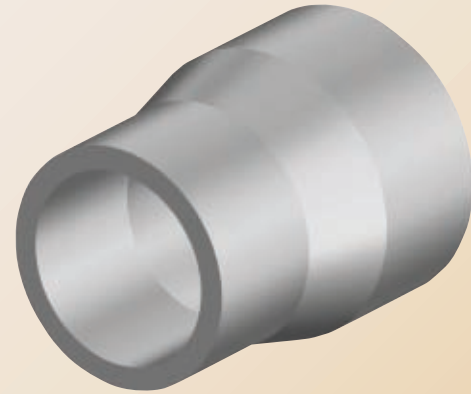
Call for availability of other sizes and dimensions.

1-800-654-3872

1-405-273-6302

www.centralplastics.com

Butt Fittings: Butt Reducers



CTS BUTT REDUCER DIMENSIONS

Nominal Size	A	B	L
1" CTS X 1/2" CTS	1.79	2.00	4.00
1 IPS X 1/2" CTS	1.44	1.80	4.50
1 IPS X 3/4" CTS	1.50	1.80	4.50
1 IPS X 1" CTS	1.60	2.25	4.50
1-1/4 CTS X 1" IPS	1.50	2.00	3.84
1-1/4 IPS X 1-1/4" CTS	2.50	2.50	5.75
2" IPS X 1-1/4" CTS	2.49	2.88	6.31
2" IPS X 1-1/2" CTS	2.19	2.29	5.00
2" IPS X 2" CTS	2.75	3.00	6.00
2" IPS X 2" CTS	2.75	3.00	6.00

IPS BUTT REDUCER DIMENSIONS

Nominal Size	A	B	L
1 X 1/2"	1.50	1.25	4.00
1 X 3/4"	1.50	1.75	4.50
1-1/4" X 1"	1.86	1.92	4.25
1-1/2" X 3/4"	2.50	2.40	5.69
1-1/2" X 1"	2.50	2.28	5.75
2" X 1"	2.49	2.88	6.31
2" X 1-1/4"	3.15	2.56	6.44
2" X 1-1/2"	2.50	2.72	6.00
3" X 2"	3.22	2.50	6.65
4" X 2"	3.00	3.00	11.87
4" X 2"	2.75	2.75	7.16
4" X 3"	3.13	3.13	8.62
6" X 4"	4.22	3.75	9.13
8" X 6"	5.00	4.64	10.70
10" X 8"	6.00	5.95	16.00
12" X 10"	6.00	6.00	16.00



The connection since 1955®

The Right Connection

Call for availability of other sizes and dimensions.

1-800-654-3872

1-405-273-6302

www.centralplastics.com

Butt Fittings: Butt Reducers

(PE 2406/PE2708) REDUCERS

Size	SDR	Part Number	Pack Qty.	Wt.	CSA	IAPMO
1" CTS X 1/2" CTS	.101 WALL X .090 WALL	6911789	100	0.05	-	-
1" IPS X 1/2" CTS	DR 9.3 X .090 WALL	6911893	100	0.06	-	-
1" IPS X 1/2" IPS	DR 9.3	6911248	100	0.06	-	-
1" IPS X 3/4" CTS	DR 9.3 X .090 WALL	6911234	100	0.07	-	-
1" IPS X 3/4" IPS	DR 9.3	6910223	100	0.10	-	-
1" IPS X 1" CTS	DR 9.3 X .090 WALL	6911238	100	0.09	-	-
1" IPS X 1" CTS	DR 9.3 X .101 WALL	6911719	100	0.09	-	-
1-1/4" CTS X 1" IPS	.090 WALL X DR 9.3	6911245	100	0.07	-	-
1-1/4" IPS X 1" CTS	DR 10 X .102 WALL	10000725	100	0.10	-	-
1-1/4" IPS X 1" IPS	DR 10 X DR 11	6910218	100	0.10	-	-
1-1/4" IPS X 1-1/4" CTS	DR 9.3 X .090 WALL	6911786	100	0.14	-	-
1-1/2" IPS X 1" IPS	DR 11	6910227	100	0.20	YES	-
1-1/2" IPS X 1-1/4" IPS	DR 11	6911809	100	0.17	-	-
1-1/2" IPS X 3/4" IPS	DR 9.3	6910073	100	0.22	-	-
2" IPS X 1" IPS	DR 11	6910081	100	0.29	YES	YES
2" IPS X 1-1/4" CTS	DR 11 X .090 WALL	6912314	100	2.40	-	-
2" IPS X 1-1/4" IPS	DR 11 X DR 10	6910022	100	0.32	YES	YES
2" IPS X 1-1/2" IPS	DR 11	6910228	50	0.31	YES	-
3" IPS X 2" IPS	DR 11/11.5 X DR 11	691030221000	10	0.68	YES	YES
4" IPS X 2" IPS	DR 11/11.5 X DR 11	6910025	10	1.01	YES	YES
4" IPS X 3" IPS	DR 11/11.5	691040321000	10	0.95	YES	YES
4" IPS X 2" IPS	DR 13.5 X DR 11	6910625	10	1.09	-	-
4" IPS X 3" IPS	DR 13.5 X DR 11	6910646	10	1.03	-	-
6" IPS X 4" IPS	DR 11/11.5	691060421000	5	3.33	YES	YES
6" IPS X 4" IPS	DR 13.5 X DR 11	6911477	5	2.99	-	-
6" IPS X 4" IPS	DR 13.5	6911600	5	3.09	-	-
8" IPS X 6" IPS	DR 11 X DR 11/11.5	6912389	6	5.31	-	-
8" IPS X 6" IPS	DR 11/11.5	691080621000	6	5.86	YES	-
8" IPS X 6" IPS	DR 13.5 X DR 11	6911107	6	6.06	-	-
8" IPS X 6" IPS	DR 13.5	6910451	6	6.20	YES	-



The connection since 1955®

The Right Connection

Call for availability of other sizes and dimensions.

1-800-654-3872

1-405-273-6302

www.centralplastics.com

Butt Fittings: Butt Reducers

(PE3408/PE4710) CTS & IPS REDUCERS					
Size	SDR	Part Number	Pack Qty.	Wt.	AWWA
3/4" IPS X 3/4" CTS	DR 11 X .090 WALL	10004186	100	0.03	-
1" CTS X 1/2" CTS	.101 WALL X .090 WALL	10004187	100	0.04	YES
1" IPS X 3/4" CTS	DR 11 X .090 WALL	10004188	100	0.07	YES
1" IPS X 1/2" CTS	DR 9.3 X .090 WALL	10004189	50	0.09	YES
1" IPS X 1/2" IPS	DR 9.3	10004190	100	0.07	YES
1" IPS X 3/4" IPS	DR 9.3	10004192	100	0.09	YES
1" IPS X 3/4" CTS	DR 9.3 X .090 WALL	10004191	100	0.09	YES
1" IPS X 1" CTS	DR 9.3 X .121 WALL	10004194	100	0.10	YES
1-1/4" CTS X 1" IPS	.090 WALL X DR 9.3	10003945	100	0.07	YES
1-1/4" IPS X 1" IPS	DR 11	10004197	100	0.11	YES
1-1/4" IPS X 1-1/4" CTS	DR 9.3 X .090 WALL	10003946	100	0.15	YES
1-1/2" IPS X 1" IPS	DR 11	10004198	100	0.16	YES
1-1/2" IPS X 3/4" IPS	DR 9.3	10003947	100	0.18	YES
1-1/2" IPS X 1" IPS	DR 9.3	10004199	100	0.19	YES
2" IPS X 1" IPS	DR 11	10003948	100	0.29	YES
2" IPS X 1-1/4" CTS	DR 11 X .090 WALL	10004200	100	0.30	YES
2" IPS X 1-1/4" IPS	DR 11	10002950	100	0.33	YES
2" IPS X 1-1/2" IPS	DR 11	10003814	50	0.30	YES
2" IPS X 2" CTS	DR 11 X .193 WALL	10004202	20	0.57	YES
3" IPS X 2" IPS	DR 11	10002951	10	0.65	YES
3" IPS X 2 IPS	DR 9	10004208	10	1.21	YES
3" IPS X 2" IPS	DR 9/9.3	10004209	10	1.15	YES
4" IPS X 2" IPS	DR 17	10004212	10	0.89	YES
4" IPS X 2" IPS	DR 11	10002952	10	1.02	YES
4" IPS X 2" IPS	DR 9/9.3	10004215	10	0.89	YES
4" IPS X 3" IPS	DR 17	10004213	10	0.98	YES
4" IPS X 3" IPS	DR 11	10002953	10	1.18	YES
4" IPS X 3" IPS	DR 9/9.3	10004216	10	1.73	YES
6" IPS X 4" IPS	DR 17	10004219	5	3.30	YES
6" IPS X 4" IPS	DR 11	10002954	5	3.26	YES
6" IPS X 4" IPS	DR 9	10004221	5	3.67	YES
8" IPS X 6" IPS	DR 17	10004224	5	5.41	YES
8" IPS X 6" IPS	DR 11	6912955	6	6.13	YES
8" IPS X 6" IPS	DR 9	10004227	6	7.69	YES



The connection since 1955®

Call for availability of other sizes and dimensions.

The Right Connection

1-800-654-3872

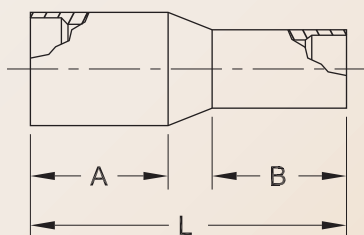
1-405-273-6302

www.centralplastics.com

Butt Fittings: Butt Reducers

(PE3408/PE4710) IPS REDUCERS

Size	SDR	Part Number	Pack Qty.	Wt.	AWWA
10" IPS X 8" IPS	DR 17	6911828	1	15.61	YES
10" IPS X 8" IPS	DR 11	6911664	1	16.40	YES
10" IPS X 8" IPS	DR 9	10000627	1	18.00	YES
12" IPS X 10" IPS	DR 17	6912171	1	21.00	YES
12" IPS X 10" IPS	DR 11	6912170	1	24.20	YES
12" IPS X 10" IPS	DR 9	10000628	1	27.00	YES



CTS BUTT REDUCER DIMENSIONS

Nominal Size	A	B	L
1" CTS X 1/2" CTS	1.79	2.00	4.00
1 IPS X 1/2" CTS	1.60	1.80	4.58
1 IPS X 3/4" CTS	1.60	1.80	4.58
1 IPS X 1" CTS	1.60	2.25	4.50
1-1/4 CTS X 1" IPS	1.50	2.00	3.78
1-1/4 IPS X 1-1/4" CTS	2.50	2.50	5.75
2" IPS X 1-1/4" CTS	2.49	2.88	6.31
2" IPS X 1-1/2" CTS	2.19	2.29	5.00
2" IPS X 2" CTS	2.75	3.00	6.00

IPS BUTT REDUCER DIMENSIONS

Nominal Size	A	B	L
1 X 1/2"	1.50	1.25	4.00
1 X 3/4"	1.50	1.75	4.50
1-1/4" X 1"	1.86	1.92	4.25
1-1/2" X 3/4"	2.50	2.40	5.69
1-1/2" X 1"	2.50	2.28	5.75
2" X 1"	2.49	2.88	6.31
2" X 1-1/4"	3.15	2.56	6.44
2" X 1-1/2"	2.50	2.72	6.00
3" X 2"	3.22	2.50	6.65
4" X 2"	2.75	2.75	7.16
4" X 3"	3.00	2.50	6.38
6" X 4"	4.22	3.75	9.13
8" X 6"	5.00	4.64	10.70
10" X 8"	6.00	6.00	16.00
12" X 10"	6.00	6.00	16.00



The Right Connection

Items shown are standard sizes and wall thicknesses.
Call for availability of other sizes and dimensions.

1-800-654-3872

1-405-273-6302

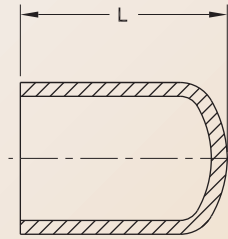
www.centralplastics.com

Butt Fittings: Butt Cap

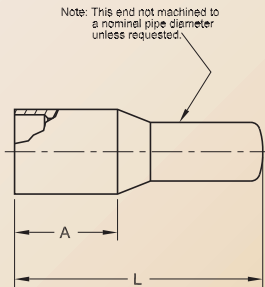


Style 2 shown here.

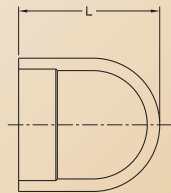
Style 1



Style 2



Style 3



STYLE 1 END CAP DIMENSIONS

Nominal Size	A	B	L
1/2" CTS	*	*	1.65
1/2" IPS	*	*	2.07
3/4" CTS	*	*	2.14
3/4" IPS	*	*	2.04
1" CTS	*	*	2.18
1" IPS	*	*	2.09
1-1/4" IPS	*	*	3.25
1-1/2" IPS	*	*	2.58
2" IPS	*	*	2.72

STYLE 2 END CAP DIMENSIONS

Nominal Size	A	B	L
2" IPS	3.13	*	7.00
3" IPS	2.88	*	7.43
4" IPS	3.00	*	7.75
6" IPS	4.22	*	10.25
8" IPS	5.14	*	12.41

STYLE 3 END CAP DIMENSIONS

Nominal Size	A	B	L
10" IPS	*	*	11.38
10" IPS	*	*	11.38
12" IPS	*	*	13.88
12" IPS	*	*	13.88



The connection since 1955®

The Right Connection

Call for availability of other sizes and dimensions.

1-800-654-3872

1-405-273-6302

www.centralplastics.com

Butt Fittings: Butt Cap

(PE2406/PE2708) CTS & IPS BUTT CAPS

Size	SDR	Part Number	Pack. Qty.	Wt.	CSA	IAPMO	Cap Style
1/2" CTS	.090 WALL	6911497	100	0.01	YES	-	Style 1
1/2" IPS	DR 9.3	6910631	100	0.02	-	-	Style 1
3/4" CTS	.090 WALL	6912138	100	0.02	-	-	Style 1
3/4" IPS	DR 11	6910221	100	0.03	YES	-	Style 1
1" CTS	.101 WALL	6912470	100	0.03	-	-	Style 1
1" IPS	DR 11	6910220	100	0.04	YES	-	Style 1
1-1/4" IPS	DR 10	6910052	50	0.12	YES	-	Style 1
1-1/2" IPS	DR 11	6910225	50	0.11	-	-	Style 1
2" IPS	DR 11	691022200000	40	0.38	YES	YES	Style 1
2" IPS	DR 11	6912474	40	0.17	-	-	Style 2
3" IPS	DR 11	691032200000	10	0.90	YES	YES	Style 2
4" IPS	DR 13.5	6910624	10	1.45	-	-	Style 2
4" IPS	DR 11	691042200000	10	1.37	YES	YES	Style 2
6" IPS	DR 13.5	6910452	5	3.56	-	-	Style 2
6" IPS	DR 11/11.5	691062200000	5	4.19	YES	YES	Style 2
8" IPS	DR 13.5	6910453	6	6.95	YES	-	Style 2
8" IPS	DR 11	691082200000	6	7.82	YES	YES	Style 2
10" IPS	DR 13.5	10002781	1	11.75	-	-	Style 2
10" IPS	DR 11	6912345	1	11.92	-	-	Style 3
12" IPS	DR 13.5	6912347	1	20.18	-	-	Style 3
12" IPS	DR 11	6912346	1	20.78	-	-	Style 3

(PE3408/PE4710) CTS & IPS BUTT CAPS

Size	SDR	Part Number	Pack. Qty.	Wt.	AWWA	Cap Style
1/2" CTS	.090 WALL	10004157	100	0.01	YES	Style 1
3/4" IPS	DR 11	10003713	100	0.05	YES	Style 1
1" CTS	.101 WALL	6912471	100	0.03	YES	Style 1
1" IPS	DR 11	10003837	100	0.04	YES	Style 1
1-1/4" IPS	DR 11	10001876	50	0.10	YES	Style 1
1-1/2" IPS	DR 11	10004159	50	0.10	YES	Style 1
1-1/2" IPS	DR 9.3	10003942	50	0.18	YES	Style 1
2" IPS	DR 11	6910882	40	0.16	YES	Style 1
2" IPS	DR 11	10004165	40	0.16	YES	Style 2
3" IPS	DR 17	10004168	10	0.87	YES	Style 2



The connection since 1955®

The Right Connection

Call for availability of other sizes and dimensions.

1-800-654-3872

1-405-273-6302

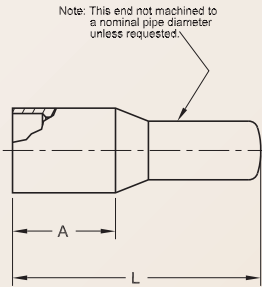
www.centralplastics.com

Butt Fittings: Butt Cap

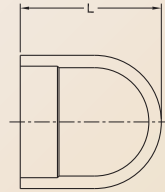


Style 2 shown here.

Style 2



Style 3



STYLE 2 END CAP DIMENSIONS			
Nominal Size	A	B	L
3" IPS	2.88	*	7.43
4" IPS	3.00	*	7.75
6" IPS	4.22	*	10.25
8" IPS	5.14	*	12.41

STYLE 3 END CAP DIMENSIONS			
Nominal Size	A	B	L
10" IPS	*	*	11.38
10" IPS	*	*	11.38
12" IPS	*	*	13.88
12" IPS	*	*	13.88

(PE3408/PE4710) IPS BUTT CAPS

Size	SDR	Part Number	Pack. Qty.	Wt.	AWWA	Cap Style
3 IPS	DR 11	10002937	10	0.80	YES	Style 2
3" IPS	DR 9.3	10003671	10	0.57	YES	Style 2
4" IPS	DR 17	10004171	10	1.30	YES	Style 2
4" IPS	DR 11	10002938	10	1.40	YES	Style 2
4" IPS	DR 9	10004173	10	2.50	YES	Style 2
6" IPS	DR 17	10004177	5	3.98	YES	Style 2
6" IPS	DR 11	10002939	5	4.36	YES	Style 2
6" IPS	DR 9	10004179	5	5.61	YES	Style 2
8" IPS	DR 17	10004182	6	7.14	YES	Style 2
8" IPS	DR 11	10002940	6	7.46	YES	Style 2
8" IPS	DR 9	10004184	6	8.15	YES	Style 2
10" IPS	DR 11	10004161	1	11.75	YES	Style 3
12" IPS	DR 11	10004163	1	21.10	YES	Style 3



The connection since 1955®

The Right Connection

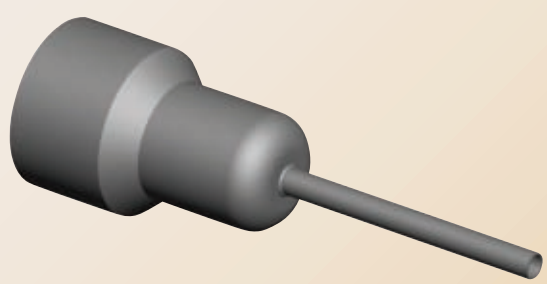
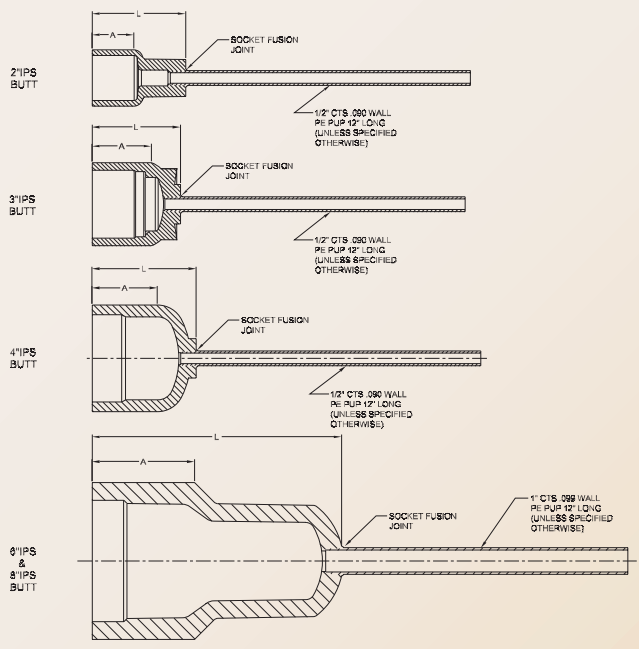
Call for availability of other sizes and dimensions.

1-800-654-3872

1-405-273-6302

www.centralplastics.com

Butt Fittings: Purge Caps



(PURGE CAPS WITH PE PUPS SHOWN, CAN ALSO BE MADE AVAILABLE WITHOUT PE PUPS FUSED ON)

PURGE CAP DIMENSIONS		
Nominal Size	A	L
2" IPS (DR 11)	2.50	4.78
3" IPS (DR 11)	2.49	3.72
4" IPS (DR 11)	2.75	4.31
6" IPS (DR 11)	4.08	10.46
8" IPS (DR 11)	5.14	12.41

(PE 2406/PE 2708) SOCKET FUSION PURGE CAPS

Size	Part Number	Pack. Qty.	Wt.	CSA
2" IPS	6912391	25	0.29	-
4" IPS	6912393	10	1.06	-
6" IPS	6912394	5	4.00	-
8" IPS	6912395	6	9.10	-

(PE 2406/PE 2708) BUTT FUSION PURGE CAPS

Size	Part Number	Pack. Qty.	Wt.	CSA	IAPMO
2"	6912400	15	0.48	YES	-
4"	6912402	10	1.05	YES	-
6"	6912403	10	5.00	YES	-
8"	6912404	10	9.80	YES	-

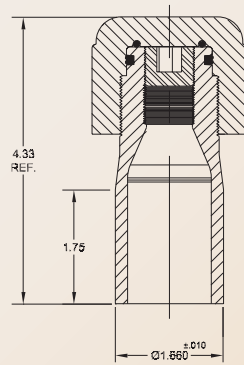


Call for availability of other sizes and dimensions.

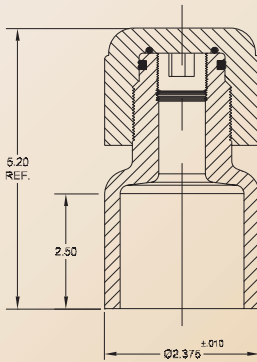
The Right Connection

1-800-654-3872
1-405-273-6302
www.centralplastics.com

Butt Fittings: Purge Points



PURGE POINT
1 1/4" IPS



PURGE POINT
2" IPS



(PE2406/PE2708) PURGE POINTS

Size	Part Number	Pack. Qty.	Wt.
1-1/4"	6911803	10	.37
2"	6912107	40	.48

(PE3408/PE4710) PURGE POINTS

Size	Part Number	Pack. Qty.	Wt.
1-1/4"	10004308	10	0.37
2"	10004307	40	0.50



The connection since 1955®

The Right Connection

Call for availability of other sizes and dimensions.

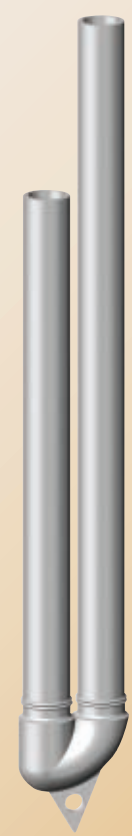
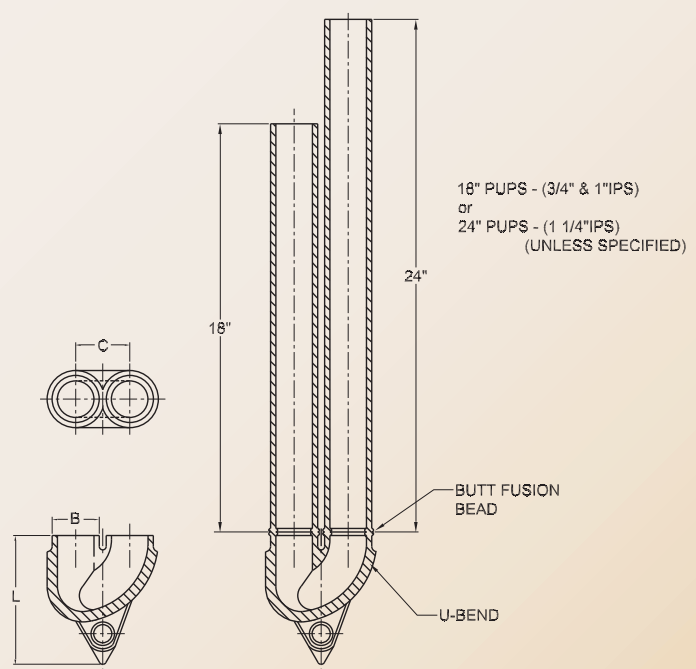
1-800-654-3872

1-405-273-6302

www.centralplastics.com

Butt Fittings: Geo-Loops (U-Bends)

*Available in PE3408/PE4710 only.



U-BEND DIMENSIONS				
Nominal Size	A	B	C	L
3/4" IPS	*	1.05	1.75	3.84
1" IPS	*	1.31	1.82	3.84
1-1/4" IPS	*	1.66	1.91	4.55

(PE 3408/PE4710) U-BENDS				
Size	SDR	Part Number	Pack. Qty.	Wt.
3/4"	DR 11	10003818	15	1.24
1"	DR 11	10003819	15	1.43
1-1/4"	DR 11	10003820	15	1.82



The Right Connection

Call for availability of other sizes and dimensions.

1-800-654-3872
1-405-273-6302
www.centralplastics.com