

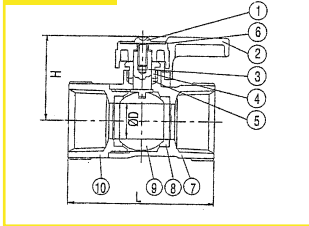
Standards Compliance



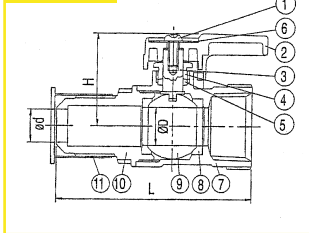
These gas appliance ball valves comply with the latest editions of these published standards:

- UL Guide MHKZ
- UL Guide YRPV
- UL Guide YSDT
- AGA Z21.15.CGA9.1
- AGA No. 3-88
- UL Guide YRBX

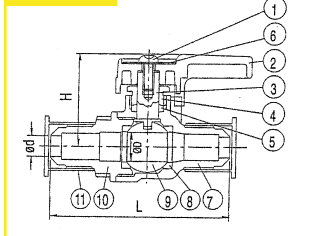
GB-12



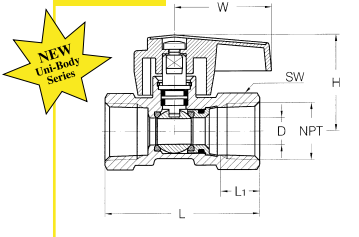
GB-13



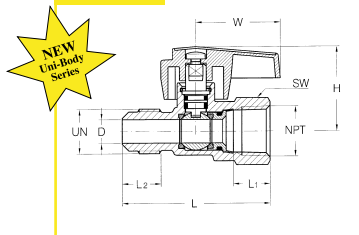
GB-14



GB-15



GB-16

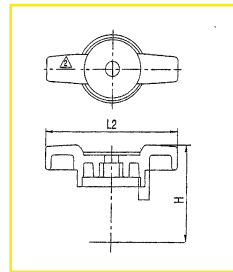


Models And Dimensions (GB-12, GB-13, GB-14)

MODEL	PART #	SIZE & END CONNECTIONS	L	L2	Dimensions (in./mm.)		d
					H	D	
GB-12	51GC2T1	3/8" FNPT x FNPT	Inches mm 1.81 46	1.77 45	1.29 33	0.39 10	N/A /
GB-12	51GC3T1	1/2" FNPT x FNPT	2.16 55	1.77 45	1.29 33	0.39 10	N/A /
GB-12	51GC4T1	3/4" FNPT x FNPT	2.44 62	1.77 45	1.41 36	0.59 15	N/A /
GB-12	51GC5T1	1" FNPT x FNPT	2.87 73	2.75 70	1.57 40	0.78 20	N/A /
GB-13	51GD2T1	1/2" x 3/8" FNPT x Flare	2.44 62	1.77 45	1.29 33	0.39 10	0.27 7
GB-13	51GD3T1	1/2" x 1/2" FNPT x Flare	2.51 64	1.77 45	1.29 33	0.39 10	0.39 10
GB-13	51GD4T1	3/4" x 5/8" FNPT x Flare	3.03 77	1.77 45	1.41 36	0.59 15	0.50 12.70
GB-14	51GE2T1	3/8" x 3/8" Flare x Flare	2.51 64	1.77 45	1.29 33	0.39 10	0.27 7
GB-14	51GE3T1	1/2" x 1/2" Flare x Flare	2.63 67	1.77 45	1.29 33	0.39 10	0.39 10

Materials Of Construction (GB-12, GB-13, GB-14)

NO.	PART	MATERIAL
1	SCREW	STEEL
2	HANDLE	ZINC ALLOY
3	STEM	BRASS
4	STEM GLAND SCREW	BRASS
5	GLAND PACKING	TEFLON
6	NAME PLATE	ALUMINUM
7	BODY	FORGED BRASS
8	SEAT	TEFLON
9	BALL	BRASS
10	RETAINER	FORGED BRASS
11	THREAD COVER	PLASTIC

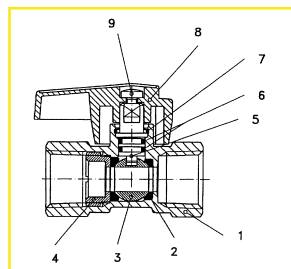


Models And Dimensions (GB-15, GB-16)

MODEL	PART #	SIZE & END CONNECTIONS	L	W	Dimensions (in./mm.)	
					H	D
GB-15	51GF201	3/8" FNPT x 3/8" FNPT	Inches mm 1.95 50	1.42 36	1.35 34	0.31 8
GB-15	51GF301	1/2" FNPT x 1/2" FNPT	2.28 58	1.42 36	1.40 36	0.39 10
GB-15	51GF401	3/4" FNPT x 3/4" FNPT	2.58 66	1.42 36	1.51 38	0.50 13
GB-16	51GG201	1/2" FNPT x 3/8" Flare	2.48 63	1.42 36	1.40 36	0.39 10
GB-16	51GG301	1/2" FNPT x 1/2" Flare	2.48 63	1.42 36	1.40 36	0.39 10

Materials Of Construction (GB-15, GB-16)

NO.	PART	MATERIAL
1	SCREW	STEEL
2	HANDLE	ALUMINUM
3	STEM	BRASS
4	STEM RETAINER	302 SS
5	O RING	NITRILE
6	BODY	BRASS
7	SEAT	PTFE
8	BALL	BRASS
9	RETAINER	BRASS



Conbraco Industries, Inc.
P.O. Box 247
Matthews, NC 28106
Phone: 704-841-6000
Fax: 704-841-6020
www.conbraco.com

®Apollo International and Conbraco are registered trademarks of Conbraco Industries, Inc. which reserves the right to change specifications without notice. ©2001 Conbraco Industries, Inc.