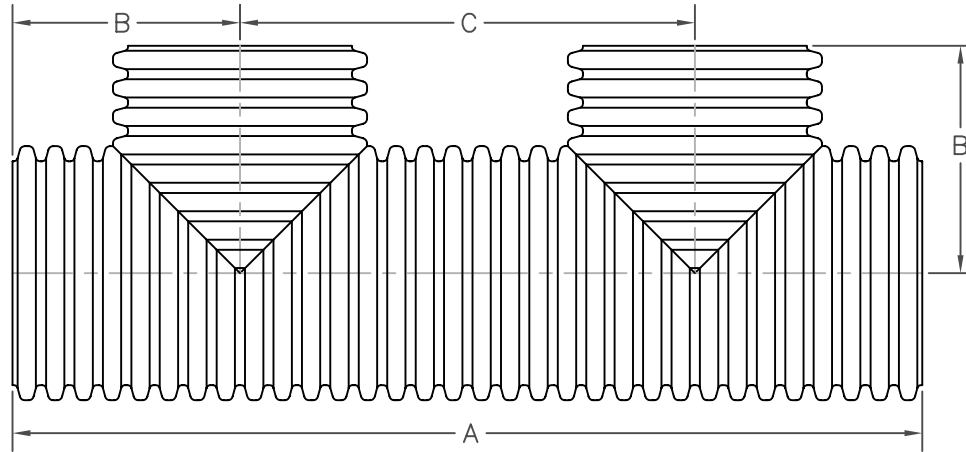


STORMTECH® DOUBLE MANIFOLD



PART #	PIPE SIZE	CHAMBER SIZE	A	B	C
0652AN7406	6 in (150 mm)	SC-740	114.00 in (2896 mm)	28.50 in (724 mm)	56.98 in (1447 mm)
0852AN7408	8 in (200 mm)	SC-740	113.28 in (2877 mm)	28.32 in (719 mm)	56.64 in (1439 mm)
1052AN7410	10 in (250 mm)	SC-740	113.40 in (2880 mm)	28.35 in (720 mm)	56.70 in (1440 mm)
1252AN7412	12 in (300 mm)	SC-740	115.20 in (2926 mm)	28.80 in (732 mm)	57.60 in (1463 mm)
1552AN7415	15 in (375 mm)	SC-740	113.96 in (2895 mm)	28.49 in (724 mm)	56.98 in (1447 mm)
1852AN7418	18 in (450 mm)	SC-740	112.56 in (2859 mm)	28.14 in (715 mm)	56.28 in (1430 mm)
2452AN7424	24 in (600 mm)	SC-740	113.40 in (2880 mm)	28.35 in (720 mm)	56.70 in (1440 mm)

PART #	PIPE SIZE	CHAMBER SIZE	A	B	C
0652AN3106	6 in (150 mm)	SC-310	78.54 in (1995 mm)	19.64 in (499 mm)	39.27 in (997 mm)
0852AN3108	8 in (200 mm)	SC-310	78.72 in (1999 mm)	19.68 in (500 mm)	39.40 in (1001 mm)
1052AN3110	10 in (250 mm)	SC-310	79.38 in (2016 mm)	19.53 in (496 mm)	39.06 in (992 mm)
1252AN3112	12 in (300 mm)	SC-310	80.64 in (2048 mm)	20.16 in (512 mm)	40.32 in (1024 mm)

NOTE: ALL DIMENSIONS ARE NOMINAL

			REVISIONS	
			BY	DATE
DRAWN BY KAH 07.29.04			MGB 9/15/04	
			APPROVED BY AWM 12.02.04	
DRAWING #				