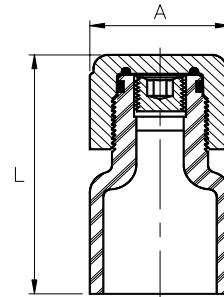


Purge Point (Double O-Ring)

Produced to ASTM D2513/D3261



<u>Purge Point</u>	<u>DR</u>	<u>Dimensions L x A (in)</u>	<u>Package Quantity</u>	<u>Package Weight (lbs.)</u>	<u>Box Quantity</u>	<u>CSA¹</u>	<u>Part Number Yellow</u>	<u>Part Number Black</u>
1 1/4" IPS Double O-Ring with 1/2" Hex	DR 9	4.30 x 2.55	10	3.4	50			1100532
	DR 10					x	1100484	
	DR 11							1100485
2" IPS Double O-Ring with 1/2" Hex	DR 9	4.30 x 2.55	10	4.0				1100511
	DR 11				x	1100482	1100483	

x - Indicates certification/approval for appropriate application or test at additional charge.

¹ - CSA and IAPMO available as DriscoPlex[®] 6500 MDPE materials ONLY

- Drawing No. - CU70B896

Special precautions are necessary when working in gaseous environments or elevated temperatures. Consult your Operations and Safety Manuals for specific recommendations. The use of these tapping tees and cutters beyond this scope is at the user's own risk.