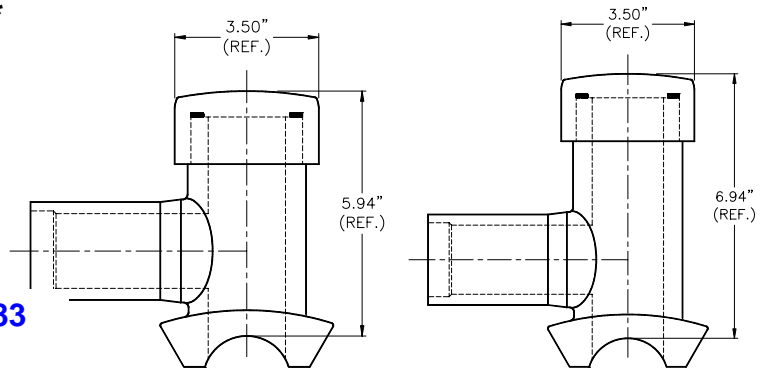


High Volume Gas Tapping Tee*
Flat Gasket
Butt/Socket Outlet
Standard/Extended Chimney
Rectangular Base

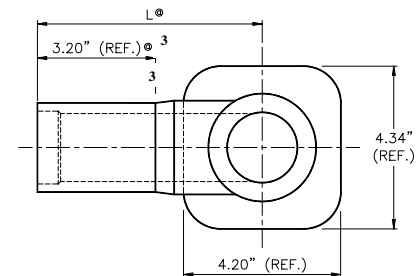
Produced to ASTM D2513, D3261 or D2683



Main Size	Outlet Size	Butt Outlet DR	Dimension L (in)	CSA ²	Protective Sleeves	Package Weight for Std. Chimney (lbs.)		Package Weight for Ext. Chimney (lbs.)		Reference Number
						With ^B Sleeve	Without ^A Sleeve	With ^B Sleeve	Without ^A Sleeve	
						2" - 18" IPS ¹	1 1/4" CTS (Socket)	N/A	5.30	
1 1/4" IPS (Butt-Fab)	DR 9	N/A		31.9	21.6		35.9	25.6	*F*HVBTT*	
	DR 11			30.9	20.6		34.9	24.6		
1 1/4" IPS (Socket)	N/A	5.30	x ²		29.1		18.7	33.1	22.7	*M*HVSTT*
2" IPS (Butt)	DR 9	4.68		PS5	29.6		19.4	33.9	23.6	*M*HVBTT*
	DR 11	5.30	x ^{2a}			28.6	18.4	32.9	22.6	
2" IPS (Socket-Fab)	N/A	N/A			PS6	32.9	22.6	36.9	26.6	*F*HVSTT*

- ¹ - See Bulletin PP 11.03 for cutter limitations
- ² - CSA available as DriscoPlex[®] 6500 MDPE materials ONLY through 8" mains
- ^{2a} - CSA available as DriscoPlex[®] 6500 MDPE materials in 4", 6", and 8" mains ONLY
- x - Indicates certification/approval for appropriate application or test.
- Drawing No. CU70B646 1-1/4" CTS Socket—Std Chimney
CU70B436 1-1/4" IPS Butt—Std. Chimney
CU70B645 1-1/4" IPS Socket—Std. Chimney
CU70B644 2" IPS Butt—Std. Chimney
CU70B444 1-1/4" IPS Socket—Ext. Chimney
CU70B501 1-1/4" CTS Socket—Ext. Chimney
CU70B442 2" IPS Butt—Ext. Chimney
CU70B502 1-1/4" IPS Butt—Ext. Chimney

^A Standard Package Quantity - 6
^B Standard Package Quantity - 4
24" Sleeve supplied with list price above
Refer to Bulletin PP 11.04 for additional Sleeve sizes



³ Dimensions NOT applicable for fabricated fittings with socket coupling

NOTE

Refer to Bulletin PP 11.02 for High Volume Tapping Tee Accessories

*DriscoPlex[®] tapping tees and cutters are designed and intended to tap polyethylene mains of wall thickness as defined in PP11.03. Special precautions are necessary when working in gaseous environments or elevated temperatures. Consult your Operations and Safety Manuals for specific recommendations. The use of these tapping tees and cutters beyond this scope is at the user's own risk.