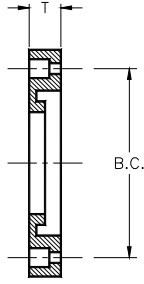


Convolute Ductile Iron IPS Back-up Rings

Nominal Size Actual OD	Pressure Class (psi)	Dimensions B.C. x T (in)	Std. Item	Weight per Item (lbs.)	List Price	Bolt Length	Bolt Diameter	Bolt Number	FM		Part Number
									150	200	
1 1/2" 1.900"	267	2.38 x .5	N	1.0	C.F.Q.	4.5	5/8	4			1006763
2" 2.375"	267	4.75 x 0.75	Y	3.0	C.F.Q.	4.5	3/4	4	x	x	1006773
3" 3.500"											See Page 2
4" 4.500"					C.F.Q.						See Page 2
6" 6.625"					C.F.Q.						See Page 2
8" 8.625"	267	11.75 x 1.12	Y	11.0	C.F.Q.	7.5	7/8	8	x	x	1070539
10" 10.750"	160	14.25 x 0.98	Y	12.0	C.F.Q.	7.0	1.0	12			1064909
	267	14.25 x 1.19	Y	16.0	C.F.Q.	8.5	1.0	12	x	x	1006829
12" 12.750"	160	17.00 x 1.25	Y	20.0	C.F.Q.	7.5	1.0	12			1064910
	267	17.00 x 1.50	Y	23.0	C.F.Q.	9.0	1.0	12	x	x	1009830
14" 14.000"	160	18.75 x 1.38	Y	30.0	C.F.Q.	8.5	1-1/8	12			1064911
	267	18.75 x 1.63	Y	37.0	C.F.Q.	10.0	1-1/8	12	x	x	1009831
16" 16.000"	160	21.25 x 1.65	Y	40.0	C.F.Q.	9.0	1-1/8	16			1064952
	267	21.25 x 1.88	Y	49.0	C.F.Q.	10.5	1-1/8	16	x	x	1009832
18" 18.000"	160	22.75 x 1.67	Y	45.0	C.F.Q.	9.5	1-1/4	16			1064953
	200	22.75 x 1.80	N	48.0	C.F.Q.	11.5	1-1/4	16	x	x	1009833
20" 20.000"	160	25.00 x 1.81	Y	55.0	C.F.Q.	10.5	1-1/4	20			1036802
	200	25.00 x 2.06	N	61.0	C.F.Q.	12.5	1-1/4	20	x	x	1009847
22" 22.000"	160	27.25 x 2.00	Y	65.0	C.F.Q.	12.0	1-3/8	20			1064954
	200	27.25 x 2.13	N	72.0	C.F.Q.	14.5	1-3/8	20	x	x	1009849
24" 24.000"	160	29.50 x 2.13	Y	80.0	C.F.Q.	11.5	1-3/8	20			1036732
	200	29.50 x 2.17	N	91.0	C.F.Q.	14.5	1-3/8	20	x	x	1009851

x - Indicates certification/approval for appropriate application at additional charge.
 - Dimensions and weights are approximate and subject to change.
 - Drawing No. - CU70B959



Convolute Ductile Iron IPS Back-up Rings

Nominal Size Actual OD	Pressure Class (psi)	Dimensions B.C. x T (in)	Std. Item	Weight per Item (lbs.)	List Price	Bolt Length	Bolt Diameter	Bolt Number	FM 150	FM 200	Part Number
					C.F.Q.						
3" 3.500"	275	6.00 x 0.94	Y	4.5	C.F.Q.	5.0	3/4	4	x	x	1101131
4" 4.500"	275	7.50 x 0.94	Y	5.5	C.F.Q.	5.5	3/4	8	x	x	1101182
6" 6.625"	275	9.50 x 1.00	Y	7.5	C.F.Q.	6.5	7/8	8	x	x	1101183
					C.F.Q.						
					C.F.Q.						
					C.F.Q.						
					C.F.Q.						
					C.F.Q.						
					C.F.Q.						
					C.F.Q.						
					C.F.Q.						
					C.F.Q.						
					C.F.Q.						
					C.F.Q.						
					C.F.Q.						

x - Indicates certification/approval for appropriate application at additional charge.
 - Dimensions and weights are approximate and subject to change.
 - Drawing No. - CU70B-959