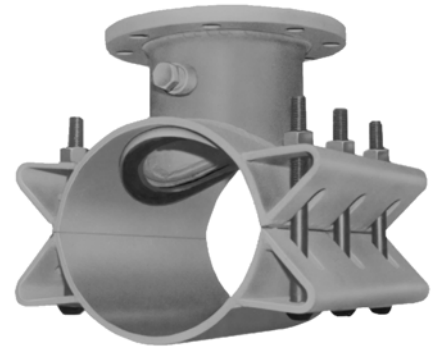


JCM Stainless Steel Tapping Sleeves with Outlet Seal Gasket

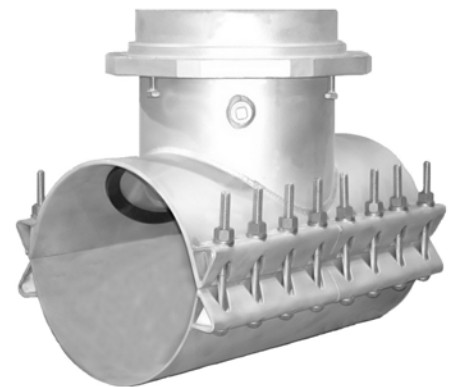
Available With Flanged Outlet or Mechanical Joint Outlet*
in Stainless Steel or Carbon Steel

Rugged and Heavy Duty Stainless Tapping Sleeves Offer Extra Benefits.

- **Heavy Duty Design...**
Heavier construction and thicker metal provide extra reinforcement of the pipe and outlet. The extra bolting power and body thickness eliminate problems inherent with light weight sleeves. Reduced weight aids in installation and handling as well as reducing load on the pipe.
- **High Pressure Capability - High Safety Factor...**
The broad, heavy hydromechanical gasket provides for high working pressure applications. They are also ideal for critical problem prone taps such as pump and lift stations, large diameter mains and large outlets.
- **Large Sizes - High Pressure...**
The premier sleeve for larger sizes of ductile iron, PVC, PE and steel pipe, these sleeves are capable of working pressure of 1.5 times the valves commonly used with these types of pipe. Higher pressure sleeves are available on request.
- **Extra Wide for Support and Stability...**
Extra width and heavier neck and body material provide extra reinforcement of the outlet and extra stability during the tapping process.
- **Affordable...**
These stainless sleeves are surprisingly affordable in all sizes. Larger sleeves are priced less than ductile iron mechanical joint sleeves which offer less corrosion resistance and pressure capability.



JCM 452 - 464 Stainless Tapping Sleeve
Flanged Outlet



JCM 459 - 465 Stainless Tapping Sleeve
Mechanical Joint Outlet*

MATERIAL SPECIFICATIONS

(Fitting dimensions - see JCM 412 Fabricated Tapping Sleeve)

BODY: Stainless Steel, 18-8 Type 304. Optional 316 Stainless Steel.

BOLTS: Stainless Steel, Type 304. Optional 316 Stainless Steel.

OUTLET: Heavy Stainless Steel Pipe. Optional 316 Stainless Steel.

GASKET: Gasket compounded for use water, salt solutions, mild acids, bases and sewage

452 FLANGE: CF8 Cast Stainless Steel - equivalent to 18-8 Type 304 Stainless Steel. ANSI 150lb. Drilling, recessed for tapping valve per MSS-SP 60. Optional 316 Stainless Steel.

464 FLANGE: AWWA C207 Class D, ANSI 150lb. Drilling, recessed for tapping valve MSS-SP60.

459 MJ OUTLET: CF8 Cast Stainless Steel - equivalent to 18-8 Type 304 Stainless Steel meets AWWA C-111/ANSI 21.11 Standard Dimensions. Optional 316 Stainless Steel.

465 MJ OUTLET: Carbon Steel meets AWWA C-111/ANSI 21.11 Standard Dimensions

JCM Industries Tapping Sleeves meet or exceed the ANSI/AWWA C-223 and the MSS-SP 124 Standards as applicable.

*Licensed by PowerSeal Corporation U. S. Patent No. 6,227,234.

Stainless Steel Tapping Sleeves - Outlet Seal Gasket - Mechanical Joint Outlet*

JCM 459 Stainless Steel Mechanical Joint Outlet

JCM Mechanical Joint Outlets meet AWWA

JCM 465 Carbon Steel Mechanical Joint Outlet

C-111/ANSI 21.11 Standard Dimensions

NOM. PIPE SIZE (IN.)	SLEEVE O.D. RANGE (IN.)	MODEL 459 STAINLESS STEEL MJ OUTLET	MODEL 465 CARBON STEEL MJ OUTLET	OUTLET SIZES	APPROX. WEIGHT EACH
4	4.50	459-0450	465-0450	X 3 [^]	32
	4.80	459-0480	465-0480	X 4	35
6	6.63	459-0663	465-0663	X 3 [^]	74
	6.83 - 7.16	459-0690	465-0690	X 4	76
	7.05 - 7.40	459-0720	465-0720	X 6	82
	7.40 - 7.73	459-0745	465-0745		
8	8.63	459-0863	465-0863	X 3 [^]	82
	8.98 - 9.37	459-0905	465-0905	X 4	85
	9.27 - 9.69	459-0940	465-0940	X 6	88
				X 8	118
10	9.83 - 10.25**	459-1000	465-1000	X 3 [^]	89
	10.64 - 10.86	459-1075	465-1075	X 4	92
	11.03 - 11.47	459-1110	465-1110	X 6	96
	11.36 - 11.80	459-1140	465-1140	X 8	125
	11.76 - 12.24	459-1200	465-1200	X 10	168
12	12.62 - 12.88	459-1275	465-1275	X 3 [^]	95
	13.13 - 13.60	459-1320	465-1320	X 4	100
	13.60 - 14.09	459-1392	465-1392	X 6	104
	14.08 - 14.56	459-1420	465-1420	X 8	140
				X 10	176
14	14.59 - 15.08	459-1475	465-1475	X 12	216
	15.23 - 15.80	459-1530	465-1530	X 3 [^]	102
	15.73 - 16.22	459-1600	465-1600	X 4	115
	16.30 - 16.73	459-1650	465-1650	X 6	116
				X 8	150
16	16.74 - 17.26	459-1684	465-1684	X 10	190
	17.33 - 17.87	459-1740	465-1740	X 12	220
	17.88 - 18.43	459-1800	465-1800	X 3 [^]	102
	18.62 - 19.19	459-1875	465-1875	X 4	115
				X 6	120
18	18.87 - 19.45	459-1920	465-1920	X 8	162
	19.41 - 20.01	459-1950	465-1950	X 10	210
	20.00 - 20.60	459-2000	465-2000	X 12	230
	20.29 - 20.94	459-2050	465-2050	X 3 [^]	115
	20.93 - 21.57	459-2130	465-2130	X 4	122
20	21.51 - 22.15	459-2160	465-2160	X 6	126
	22.16 - 22.81	459-2254	465-2254	X 8	180
	22.78 - 23.45	459-2294	465-2294	X 10	240
	23.46 - 24.16	459-2400	465-2400	X 12	245
	24.15 - 24.85	459-2450	465-2450	X 3 [^]	138
24	24.82 - 25.52	459-2502	465-2502	X 4	143
	25.71 - 26.41	459-2580	465-2580	X 6	160
	26.55 - 27.25	459-2715	465-2715	X 8	215
	27.26 - 27.96	459-2746	465-2746	X 10	280
30	28.14 - 28.84	459-2834	465-2834	X 12	312
	29.78 - 30.48	459-3000	465-3000	X 3 [^]	159
	30.48 - 31.18	459-3075	465-3075	X 4	165
	31.52 - 32.22	459-3200	465-3200	X 6	175
				X 8	226
			X 10	295	
			X 12	310	

[^]3" OUTLET IN STAINLESS STEEL ONLY (JCM MODEL 459). **These sizes not available with size on size outlets

JCM 459/465 Tapping Sleeves furnished with test plugs unless otherwise specified.

For size on size outlets a 1/2" undersize shell cutter is required.

*Licensed by PowerSeal Corporation U. S. Patent No. 6,227,234