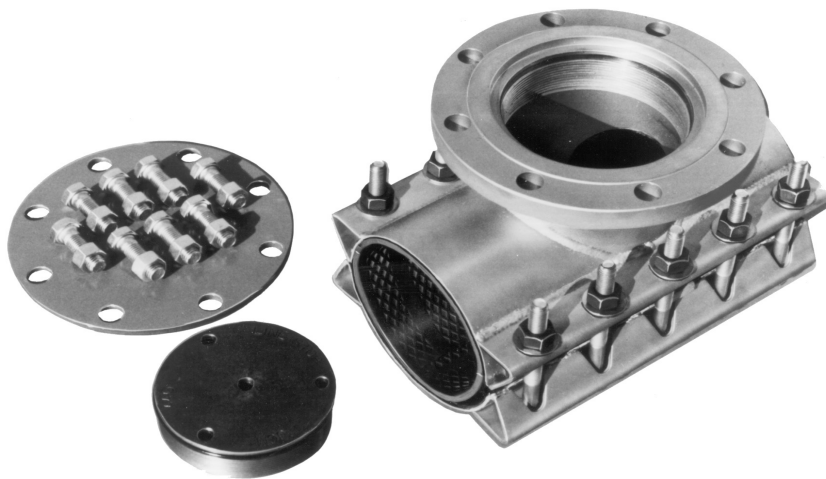


## JCM 440 Line Stop Fittings

The **JCM 440 Line Stop Fitting** sizes 4" - 12" provides extra reliability from a heavy duty, non-compromising design. By utilizing the "true tapping sleeve design", we engineered the JCM 440 to withstand the stress and mechanical forces incurred during the line stop procedure. The **JCM 440 Line Stop Fitting** is a structural fitting, engineered to provide:



**Heavy Duty Construction** - increases reliability and safety factor, eliminating shifting and flexing during the critical plugging process that can cause future complications.

**Versatile Tapping Sleeve Design** - insures high gasket sealing compression for permanent service and overcomes the physical forces involved during line stopping. Also, doubles as an all stainless steel tapping sleeve in sizes 4" - 8".

**All Stainless Construction on popular 4", 6", 8" sizes** - provides corrosion resistance for long term rugged service.

**Test Plug Outlet** - Allows for testing of all seals prior to tapping the pressurized line. This includes the sleeve to pipe seal and the completion plug seal.

**Adapts To All Popular Line Stopping Machines** - JCM 440 Line Stop Fittings will adapt to ANY manufacturer's plugging equipment, making the JCM 440 versatile and convenient to utilize.

**Installation on 150 PSI Piping Systems** - heavy duty design and materials give the standard JCM 440 Line Stop Fitting a 150 PSI working pressure capability. This working pressure capability assures restoration to full service capacity for current and future service line requirements.

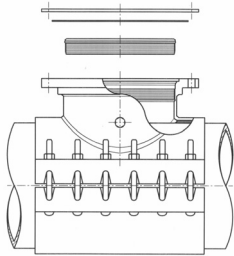
Special engineered JCM Line Stop Fittings are available for sizes 14" and larger for various types of pipe. For information, contact JCM Technical and Engineered Sales Team.

# JCM 440 Line Stop Fittings

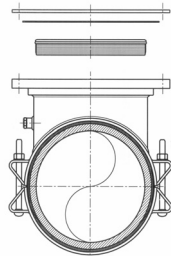
## JCM 440 LINE STOP FITTING

NOM. PIPE SIZE (IN.)	SLEEVE NUMBER	SLEEVE O.D. RANGE (IN.)	LAYING LENGTH	PLUG O.D.	WITH O-RING	APPR. WT. EACH (LBS.)
LINE STOP FITTINGS - SIZES 4" THROUGH 8" ARE STAINLESS STEEL						
4	440-0450	4.40 - 4.60	15	4.22	4.32	54
	440-0480	4.74 - 5.00	15	4.22	4.32	54
	440-0520	5.10 - 5.30	15	4.22	4.32	54
6	440-0663	6.56 - 6.76	15	6.27	6.37	82
	440-0690	6.84 - 7.10	15	6.27	6.37	82
	440-0720	7.05 - 7.25	15	6.27	6.37	82
8	440-0863	8.54 - 8.74	21	8.21	8.31	123
	440-0905	8.98 - 9.30	21	8.21	8.31	123
	440-0940	9.27 - 9.50	21	8.21	8.31	123
LINE STOP FITTINGS - SIZES 10" & 12" ARE CARBON STEEL*						
10	440-1075	10.64 - 10.86	20	10.30	10.37	275
	440-1110	11.03 - 11.40	20	10.30	10.37	275
	440-1200	11.85 - 12.15	20	10.30	10.37	275
12	440-1275	12.62 - 12.85	24	12.37	12.43	300
	440-1320	13.12 - 13.50	24	12.37	12.43	300
	440-1420	14.10 - 14.35	24	12.37	12.43	300

Adapter Flanges available to mate with line stop machines, please specify size and equipment manufacturer.



**Sizes 4" - 8"**



**Sizes 10" - 12"**

## JCM 440 Line Stop Fitting Material Specifications

### ALL SIZES

LINE STOP PLUG: Ductile Iron A536.

PLUG O-RING: Buna N Rubber

COVER PLATE GASKET: Neoprene Rubber.

BODY/OUTLET GASKET: SBR rubber - for use with water, salt solutions, mild acids and bases.

### NOMINAL SIZES 4" - 8"

BODY: Stainless Steel, 18-8 Type 304

FLANGE: Stainless Steel, 18-8 Type 304 ANSI 150 lb Drilling, recessed for tapping valve MSS-SP60.

COVER FLANGE: A-36 Cast Steel, Fusion Plastic Coated

BOLTS: Stainless Steel, 18-8 Type 304

### NOMINAL SIZES 10" - 12"

BODY: ASTM 283 Grade C or ASTM A-36 Carbon Steel

FLANGE: AWWA C207 Class D Carbon Steel ANSI 150lb Drilling, recessed for tapping valve MSS-SP60.

COVER FLANGE: A-36 Cast Steel, shop coat primer or optional fusion epoxy coating to companion selected sleeve finish.

BOLTS: Corrosion resistant, high strength low alloy AWWA C-111, ANSI 21.11

FINISH: Corrosion resistant shop coat primer. Optional Fusion Epoxy Coating and Stainless Steel Bolts available.