

JCM 102 Extended Range Universal Clamp Couplings JCM 172 Extended Range UCC with Removeable Lug

JCM Extended Range Universal Clamp Coupling - Double/Multi-Band

JCM 102 and 172 Extended Range Universal Clamp Couplings are designed especially for systems with both asbestos-cement and cast iron pipe, or with oversized pipe. This extended range, multi-band clamp provides a full circumferential seal and extra wide range. Only 6 clamps are needed to fit all cast-iron and asbestos-cement pressure pipe in sizes 4" through 12". Extra range and safety factor make this clamp particularly suited for pipe sizes 10" and larger.

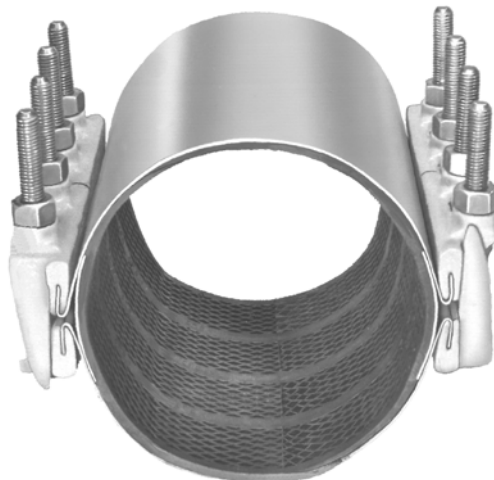
JCM 102 and 172 Extended Range/Multi-Band clamps are designed to accommodate the working characteristics of large diameter pipe. In the repair applications to large diameter pipe, there are several factors to be considered to maintain pipe integrity and return to 100% service capacity. Factors which are critical to the application include: size and type of pipe, severity of damage, working pressure or service requirements, location or repair and time factor. JCM 102 UCC design criteria accommodate these factors by providing the following strength features...

Heavy Duty Lug - provides the safety factor and solid platform to support the increased bolt torque levels required to compress the gasket and seal the damaged area.

Large Bolts - supply bolting power and high torque ability to fully compress the full circumferential gasket.

Thick Stainless Steel Band - increases pressure holding capability and provides even, consistent compression over the gasket area.

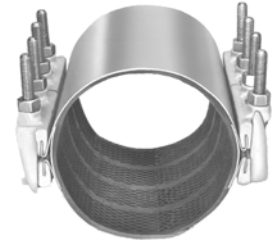
JCM 172 provides an easy to remove lug that accommodates cramped underground utility applications, rockbound soil conditions, restricted, narrow space piping galleries and limited excavation applications.



JCM 102 Extended Range Universal Clamp Couplings

JCM 172 Removeable Lug Extended Range UCC

JCM 102 Extended Range UCC - for systems with asbestos-cement and cast iron pipe or oversize pipe.
 JCM 172 Removeable Lug System Extd. Range UCC - Removeable lug system accommodates rockbound soils, crowded underground utilities, restricted, narrow spaced piping galleries and limited excavation applications.



Double Band Clamps

Nom. Pipe Size (IN.)	Clamp O.D. Range (IN.)	102 Attached Lug	172 Removeable Lug	Clamp Width - Approximate Weight						
				6"	7"	12"	15"	18"	24"	30"
				Clamp Number	Lbs.#	Lbs.#	Lbs.#	Lbs.#	Lbs.#	Lbs.#
4	4.44 - 5.24 4.74 - 5.57	0450 0480		•	•	•	•	•	•	•
				16#	20#	32#	40#	48#	64#	80#
6	6.62 - 7.42 6.84 - 7.64	0663 0690		•	•	•	•	•	•	•
				16#	20#	32#	40#	48#	64#	80#
8	8.62 - 9.42 8.99 - 9.79	0863 0905		•	•	•	•	•	•	•
				17#	21#	34#	43#	51#	68#	85#
10	10.72 - 11.72 11.04 - 12.24	1075 1110		-	-	•	-	•	•	•
						53#		80#	106#	132#
12	12.72 - 13.92 13.14 - 14.34 13.65 - 14.65	1275 1320 1365		-	-	•	-	•	•	•
						37#		52#	74#	80#
14	15.20 - 16.20	1530		-	-	•	-	•	•	•
						58#		87#	106#	145#
14 - 16	16.00 - 17.00 17.20 - 18.20	1600 1740		-	-	•	-	•	•	•
						59#		89#	108#	148#
16 - 18	18.40 - 19.40	1846		-	-	•	-	•	•	•
						62#		95#	124#	158#
18 - 20	19.40 - 20.40 20.40 - 21.40	1950 2050		-	-	•	-	•	•	•
						63#		95#	126#	158#
20 - 22	21.40 - 22.40 22.50 - 23.60	2160 2260		-	-	•	-	•	•	•
						67#		100#	134#	168#

Multi-Band Clamps

24	23.80 - 25.00 25.50 - 26.70 27.90 - 29.10	2400 2580 2800		-	-	•	-	•	•	•
						93#		140#	186#	233#
24 - 30	29.80 - 31.00 31.70 - 32.90	3000 3200		-	-	•	-	•	•	•
						98#		147#	196#	245#
36	37.85 - 39.20	3830		-	-	•	-	•	•	•
						117#		175#	234#	292#

HOW TO ORDER

1. Determine O.D. of pipe.
2. Select proper clamp O.D. range and band width.
3. Determine Model Number.
4. Specify clamp number. Model 102 or 172.

Example: To fit Cast Iron pipe, 6.90 O.D. with 6" width, order: 102-0690-6 or 172-0690-6

Clamps do not prevent lateral movement of pipe. Applications in which the pipe may move out of the clamp, proper anchorage of the pipe must be provided.

Larger sizes and ranges available upon request, contact JCM Sales Team.

