

JCM 171 Universal Clamp Couplings with Removeable Lug

JCM 170 Series Universal Clamp Couplings with Removeable Lug System Simple and Easy to Use



The JCM 170 Series Universal Clamp Coupling with Removeable Lug System provides:

Easy to Remove Lug - simply slide the open ear lug section off the stainless band receiver pleat, install the clamp around the pipe and slide the lug back into place. A simple transfer of bolt torque energy from the bolt to the stainless steel band locks the lug into place and prevents band pull out.

Heavy Duty Ductile Iron Lug - Ductile Iron ASTM A-536, JCM quality is not sacrificed. These clamps offer the same Great JCM Quality and Delivery.

Certifiable Stainless Steel Band - 18-8 Type 304 Stainless Steel Band provides the full circumferential seal on the pipe wall. The recessed, molded in stainless steel bridge plate completes the corrosion resistant shield.

Full Line of Diameters and Widths - JCM 170 Series is available in the exact sizes and ranges as the JCM Models 101, 102, 103 and 104 are have the same great availability. Single band, multi-band and tapped outlets are readily available.

JCM 170 Series Universal Clamp Couplings with Removeable Lug System Overcome common pipe repair and connection problems such as:

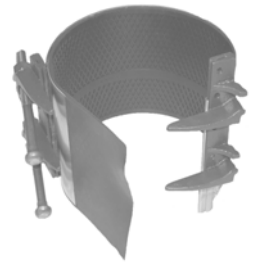
**Cramped Underground Utility Applications
Rockbound Soil Conditions
Restricted, Narrow Space Piping Galleries
Limited Excavation Applications**



JCM 101 Universal Clamp Couplings JCM 171 Universal Clamp Couplings

JCM 101 Standard Range Universal Clamp Coupling - provides a full circumferential seal and wide range for permanently repairing or reconnecting asbestos-cement, cast iron, steel, plastic and other types of pipe.

JCM 171 Removeable Lug Universal Clamp Coupling - provides a removeable lug system to accommodate rockbound soils, crowded underground utilities, restricted, narrow spaced piping galleries and limited excavation applications.



| Nom. Pipe Size (IN.) | Clamp O.D. Range (IN.) | 101 Attached | 171 Removeable Lug | Clamp Width - Approximate Weight | | | | | | |
|----------------------|---|--------------------------------------|--------------------|----------------------------------|-------|-------|-------|-------|-------|-------|
| | | | | 6" | 7" | 12" | 15" | 18" | 24" | 30" |
| | | | | Lbs.# | Lbs.# | Lbs.# | Lbs.# | Lbs.# | Lbs.# | Lbs.# |
| 1-1/2 | 1.88 - 2.15 | 0190 | | • | - | • | - | - | - | - |
| | | | | 7# | | 14# | | | | |
| 2 - 2-1/2 | 2.35 - 2.63 2.70 - 3.13 | 0238 0275 | | • | • | • | • | - | - | - |
| | | | | 8# | 9# | 15# | 19# | | | |
| 3 | 3.46 - 3.70 3.73 - 4.13 | 0350 0400 | | • | • | • | • | - | - | - |
| | | | | 8# | 10# | 16# | 20# | | | |
| 4 | 4.45 - 4.75 4.74 - 5.14 4.95 - 5.35 5.22 - 5.62 | 0450 0480 0500 0525 | | • | • | • | • | • | • | • |
| | | | | 9# | 11# | 18# | 22# | 27# | 36# | 44# |
| | | | | • | • | • | • | • | • | • |
| | | | | 10# | 12# | 19# | 24# | 29# | 38# | 48# |
| 6 | 5.95 - 6.35 6.56 - 6.96 6.85 - 7.25 7.05 - 7.45 7.45 - 7.85 | 0600 0663 0690 0710 0745 | | • | • | • | • | • | • | • |
| | | | | • | • | • | • | • | • | • |
| | | | | 11# | 13# | 21# | 27# | 32# | 42# | 53# |
| | | | | • | • | • | • | • | • | • |
| 10 | 10.60 - 11.00 11.04 - 11.44 11.34 - 11.74 11.75 - 12.15 12.00 - 12.40 | 1075 1110 1140 1175 1200 | | - | • | • | • | • | • | • |
| | | | | • | • | • | • | • | • | • |
| | | | | 19# | 36# | 39# | 52# | 70# | 78# | |
| | | | | • | • | • | • | • | • | • |
| 12 | 12.60 - 13.02 13.10 - 13.50 13.40 - 13.80 13.70 - 14.10 14.00 - 14.40 | 1275 1320 1340 1370 1400 | | - | • | • | • | • | • | • |
| | | | | • | • | • | • | • | • | • |
| | | | | 20# | 37# | 40# | 52# | 74# | 82# | |
| | | | | • | • | • | • | • | • | • |

HOW TO ORDER

- Determine O.D. of pipe.
- Select proper clamp O.D. range and width.
- Determine Model Number. Model 101 for standard clamp, 171 for Removeable lug system.
- Specify clamp number. **Example:** To fit Cast Iron pipe, 6.90 O.D. with 6" width, order: 101-0690-6 or 171-0690-6

Clamps do not prevent lateral movement of pipe. Applications in which the pipe may move out of the clamp, proper anchorage of the pipe must be provided.

Available Options Upon Request

Models 101-171-102-172

- Pipe sizes and ranges not listed
- Stainless Steel Bolts
- Conductive Buttons
- Specialty Gaskets
- Tapped clamps, see page 14
- Other Sizes and Ranges

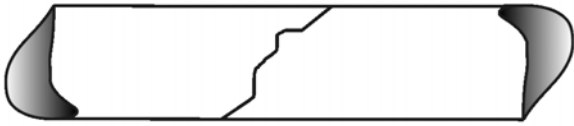


TYPICAL FIELD INSTALLATIONS FOR JCM UNIVERSAL CLAMP COUPLINGS



Holes, punctures, gouges in all types of pipe

Trick of the Trade - cover large holes with thin piece of stainless steel and install clamp. This prevents line flow from drawing the gasket into the hole and increases long-term sealing capability.



Full breaks in cast iron, ductile iron and asbestos cement pipe

Trick of the Trade - ensure the center of the clamp is over the break area. This will enable the clamp to operate at maximum performance.

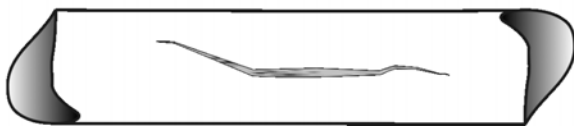


Couple pipe with slight pipe end separation.

Trick of the Trade - encircle the gap with thin strip of stainless steel and install clamp. This prevents line flow from drawing the gasket into the hole and provides the feathered gasket a sealing surface to maintain the watertight seal.



Pinholes in pitted steel and cast iron pipe.



Splits, runs, horizontal cracks in all types of pipe.

Trick of the Trade - for cast iron, ductile iron and PVC, drill a small hole at the ends of the split to stop the split from running further along the pipe.

JCM Universal Clamp Couplings

For application consultation and product recommendation and installation, contact the JCM Inside Sales Team at

*Phone 800-527-8482 or 903-832-2581
Fax 800-874-9524 or 903-838-6260
www.jcmindustries.com*

- Less pipeline downtime
- Less labor, material and equipment cost
- Less complications in scheduling crew and equipment
- Small excavations
- No need of special equipment or materials
- No need of extra pipe
- No need of complete shutdown