

# JCM INDUSTRIES

P. O. Box 1220, Nash, TX 75569-1220

Phone 800-527-8482 or 903-832-2581

Fax 800-874-9524 or 903-838-6260

[www.jcmindustries.com](http://www.jcmindustries.com)

## Typical Specification

### JCM 171 Removeable Lug Universal Clamp Couplings

All full circumferential single and multi-band repair clamps 1-1/2" and larger shall have a minimum material standard of certifiable prime 304 Stainless Steel band; heavy duty, low profile Ductile Iron Lugs per ASTM A536 with mutually supporting sliding fingers. Open ear lug shall be removeable from the band to facilitate sliding band under pipe or installing in confined spaces; 5/8" corrosion resistant alloy bolts, per ASTM A242 / ANSI 21.11/AWWA C-111, and a Styrene-Butadiene Rubber (SBR) diamond grid gasket with tapered lap joint ends and a 304 stainless steel bridge plate molded flush into the gasket. Gaskets in sizes 3" and larger shall be 1/4" thick. Clamp shall be similar to JCM 171 Universal Clamp Coupling with Removeable Lug or approved equal.

### JCM 171 Removeable Lug Universal Clamp Couplings (sizes 10" and larger)

All full circumferential single and multi-band repair clamps 10" and larger shall have a minimum material of 17 gauge certifiable prime 304 Stainless Steel band; heavy duty Ductile Iron Lugs per ASTM A536 with mutually supporting sliding fingers. Open ear lug shall be removeable from the band to facilitate sliding band under pipe or installing in confined spaces; 3/4" corrosion resistant alloy bolts, per ASTM A242 / ANSI 21.11 / AWWA C-111 and a 1/4" thick Styrene-Butadiene Rubber (SBR) diamond grid gasket with tapered stainless steel bridge plate molded flush into the gasket. The attachment shall withstand a minimum of 100 ft. lbs. of torque per bolt. Clamp shall be similar to JCM 171 Universal Clamp Coupling with Removeable Lug or approved equal.

JCM 100 Series Universal Clamp Couplings are ANSI/NSF Standard 61 Certified.



JCM 171 Universal Clamp Coupling  
Image reflects 12" width

*This typical specification, provided by JCM Industries, is a proposed guideline for use by specifying agencies to ensure significant design and material features of this product are included within the agencies' individual specifications.*



Effective 01.07.08

# JCM INDUSTRIES

P. O. Box 1220, Nash, TX 75569-1220

Phone 800-527-8482 or 903-832-2581

Fax 800-874-9524 or 903-838-6260

[www.jcmindustries.com](http://www.jcmindustries.com)

## Material Specification

### JCM Universal Clamp Couplings – Models 101, 102, 171, 172

Band: 18-8 Type 304 Certifiable Prime Stainless Steel

Lugs: Ductile Iron ASTM A-536, 60-40-18

Bolts: Corrosion resistant low alloy per ASTM A242, ANSI A21.11, AWWA C-111. National coarse rolled thread and heavy hex nut. Optional Stainless Steel 18-8 Type 304 or 316 available. Optional Epoxy Coated low alloy bolts/nuts available.

Gaskets: Virgin Styrene-Butadiene Rubber (SBR) - Compounded for use with water, salt solutions, mild acids and bases. Per ASTM D-2000 M4AA 607. Standard temperature range from -40° to 150°F (-40° to 65° C) constant, maximum intermittent 180° F (82° C). For applications on high temperatures or chemical pipelines, contact JCM Industries Technical Services.

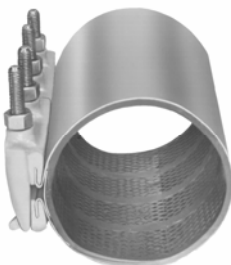
Coating: Corrosion resistant shop coat paint primer.

### JCM Tapped Universal Clamp Couplings – Models 103, 104, 173, 174

Threaded

Outlet: 18-8 Type 304 Stainless Steel

JCM 100 Series Universal Clamp Couplings are ANSI/NSF Standard 61 Certified. For ranges and widths, see JCM Industries General Product Directory Catalog. Information based on data available at the date printed below and subject to change without notice. Contact JCM Industries for amendments or changes.



JCM 171 Universal Clamp Coupling  
Image reflects 12" width



Effective 01.07.08

# JCM INDUSTRIES

P. O. Box 1220, Nash, TX 75569-1220  
 Phone 800-527-8482 or 903-832-2581  
 Fax 800-874-9524 or 903-838-6260  
[www.jcmindustries.com](http://www.jcmindustries.com)

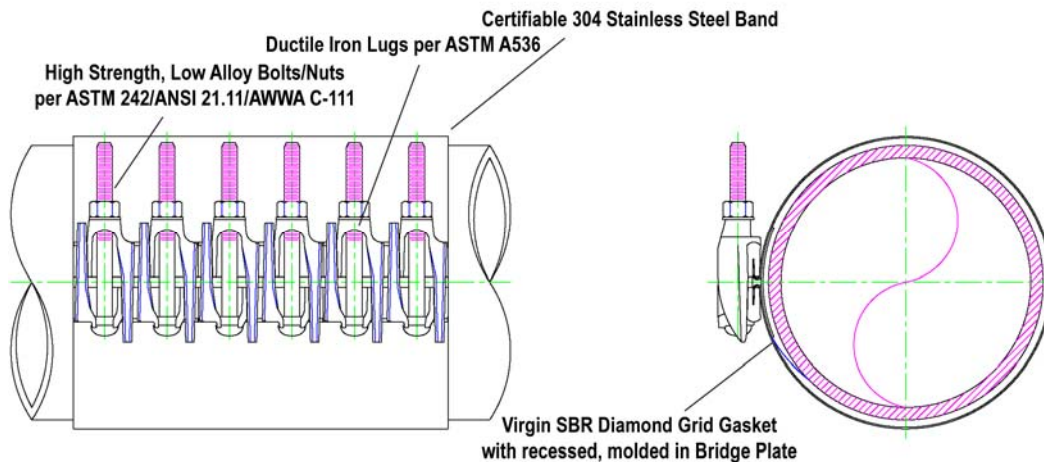
## JCM 171 Removeable Lug Universal Clamp Coupling Design Specifications

Clamp Width (Inches)	Number of Bolts
6	2
7	2
12	4
15	4
18	6
24	8
30	10

Clamp Size (Inches)	Stainless Band Gauge
1-1/2 – 4.50	24
4.80 – 9.40	20
10 – 12	17

Clamp Size (Inches)	Gasket Thickness
1-1/2 – 2	3/16"
3 and larger	1/4"

Clamp Size (Inches)	Bolt Size
1-1/2 – 8	5/8"
10 – 12	3/4"



JCM 171 Removeable Lug Universal  
 Clamp Coupling  
 Image reflects 18" width

Effective 01.07.08

