

JCM 101 Universal Clamp Couplings

JCM 101 Universal Clamp Coupling - Single Band

JCM Universal Clamp Couplings provide a full circumferential seal and wide range for the permanent repair or reconnection of asbestos-cement, cast iron, ductile iron, PVC, HDPE and other types of pipe. Critical design factors include:

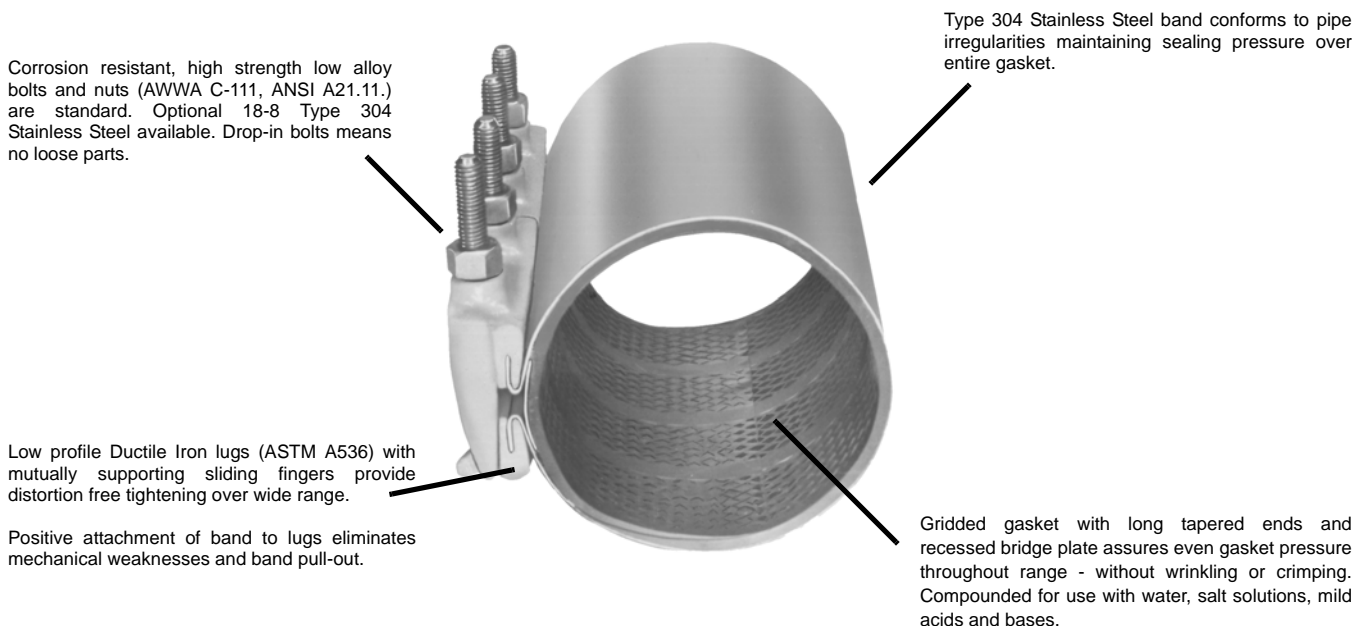
Balanced, Low Profile Ductile Iron lugs (ASTM A536) with mutually supporting sliding fingers provide distortion free tightening over a wide range. Ductile Iron lugs offer corrosion resistance and the most efficient method of transfer of energy from the fastener attachment directly to compression of the gasket.

Corrosion Resistant Type 304 Stainless Steel Band conforms to pipe irregularities, maintaining sealing pressure over the entire gasket area. Design criteria requires gauge thickness increase with clamp size. This is just one of the design points which enables JCM Universal Clamp Couplings to withstand the internal forces involved with large pipe repair.

Positive Attachment of stainless band to lugs is a structurally sound fabrication design element which accommodates the higher **“turbo torque”** capabilities ensuring permanent repairs on high pressure applications.

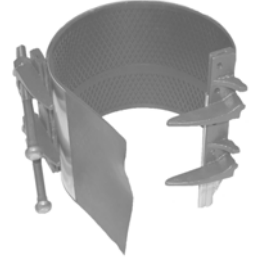
Gridded Gasket with long tapered ends and recessed bridge plate assures even gasket pressure through out the range - without wrinkling or crimping. **Diamond gridded, 1/4” thick gasket** (JCM standard on nominal sizes 4” and larger) adapt to pitted or uneven pipe surfaces to completely seal damaged areas. Standard gasket is compounded for use with water, salt solutions, mild acids, bases and sewage. Other gasket compounds for exotic line contents are available.

Larger Bolts for greater torque ratings are provided on 14” clamps and larger. The 3/4” bolts have bolt torque capability in excess of 150 ft. lbs. These higher torque value capabilities allow JCM Universal Clamp Couplings to go beyond the “standard installation”.





JCM 101 Universal Clamp Couplings JCM 171 Universal Clamp Couplings



JCM 101 Standard Range Universal Clamp Coupling - provides a full circumferential seal and wide range for permanently repairing or reconnecting asbestos-cement, cast iron, steel, plastic and other types of pipe.

JCM 171 Removeable Lug Universal Clamp Coupling - provides a removeable lug system to accommodate rockbound soils, crowded underground utilities, restricted, narrow spaced piping galleries and limited excavation applications.

Nom. Pipe Size (IN.)	Clamp O.D. Range (IN.)	101 Attached	171 Removeable Lug	Clamp Width - Approximate Weight						
				6"	7"	12"	15"	18"	24"	30"
				Lbs.#	Lbs.#	Lbs.#	Lbs.#	Lbs.#	Lbs.#	Lbs.#
1-1/2	1.88 - 2.15	0190		•	-	•	-	-	-	-
				7#		14#				
2 - 2-1/2	2.35 - 2.63 2.70 - 3.13	0238 0275		•	•	•	•	-	-	-
				8#	9#	15#	19#			
3	3.46 - 3.70 3.73 - 4.13	0350 0400		•	•	•	•	-	-	-
				8#	10#	16#	20#			
4	4.45 - 4.75 4.74 - 5.14 4.95 - 5.35 5.22 - 5.62	0450 0480 0500 0525		•	•	•	•	•	•	•
				9#	11#	18#	22#	27#	36#	44#
6	5.95 - 6.35 6.56 - 6.96 6.85 - 7.25 7.05 - 7.45 7.45 - 7.85	0600 0663 0690 0710 0745		•	•	•	•	•	•	•
				10#	12#	19#	24#	29#	38#	48#
8	7.95 - 8.35 8.54 - 8.94 8.99 - 9.39 9.27 - 9.67 9.90 - 10.30	0800 0863 0905 0940 1000		•	•	•	•	•	•	•
				11#	13#	21#	27#	32#	42#	53#
10	10.60 - 11.00 11.04 - 11.44 11.34 - 11.74 11.75 - 12.15 12.00 - 12.40	1075 1110 1140 1175 1200		-	•	•	•	•	•	•
					19#	36#	39#	52#	70#	78#
12	12.60 - 13.02 13.10 - 13.50 13.40 - 13.80 13.70 - 14.10 14.00 - 14.40	1275 1320 1340 1370 1400		-	•	•	•	•	•	•
					20#	37#	40#	52#	74#	82#

HOW TO ORDER

- Determine O.D. of pipe.
- Select proper clamp O.D. range and width.
- Determine Model Number. Model 101 for standard clamp, 171 for Removeable lug system.
- Specify clamp number. **Example:** To fit Cast Iron pipe, 6.90 O.D. with 6" width, order: 101-0690-6 or 171-0690-6

Clamps do not prevent lateral movement of pipe. Applications in which the pipe may move out of the clamp, proper anchorage of the pipe must be provided.

Available Options Upon Request

Models 101-171-102-172

- Pipe sizes and ranges not listed
- Stainless Steel Bolts
- Conductive Buttons
- Specialty Gaskets
- Tapped clamps, see page 14
- Other Sizes and Ranges

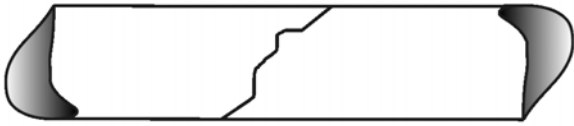


TYPICAL FIELD INSTALLATIONS FOR JCM UNIVERSAL CLAMP COUPLINGS



Holes, punctures, gouges in all types of pipe

Trick of the Trade - cover large holes with thin piece of stainless steel and install clamp. This prevents line flow from drawing the gasket into the hole and increases long-term sealing capability.



Full breaks in cast iron, ductile iron and asbestos cement pipe

Trick of the Trade - ensure the center of the clamp is over the break area. This will enable the clamp to operate at maximum performance.

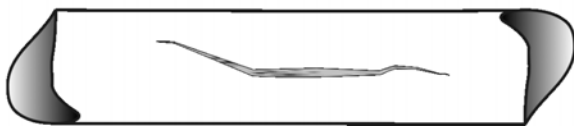


Couple pipe with slight pipe end separation.

Trick of the Trade - encircle the gap with thin strip of stainless steel and install clamp. This prevents line flow from drawing the gasket into the hole and provides the feathered gasket a sealing surface to maintain the watertight seal.



Pinholes in pitted steel and cast iron pipe.



Splits, runs, horizontal cracks in all types of pipe.

Trick of the Trade - for cast iron, ductile iron and PVC, drill a small hole at the ends of the split to stop the split from running further along the pipe.

JCM Universal Clamp Couplings

For application consultation and product recommendation and installation, contact the JCM Inside Sales Team at

*Phone 800-527-8482 or 903-832-2581
Fax 800-874-9524 or 903-838-6260
www.jcmindustries.com*

- Less pipeline downtime
- Less labor, material and equipment cost
- Less complications in scheduling crew and equipment
- Small excavations
- No need of special equipment or materials
- No need of extra pipe
- No need of complete shutdown