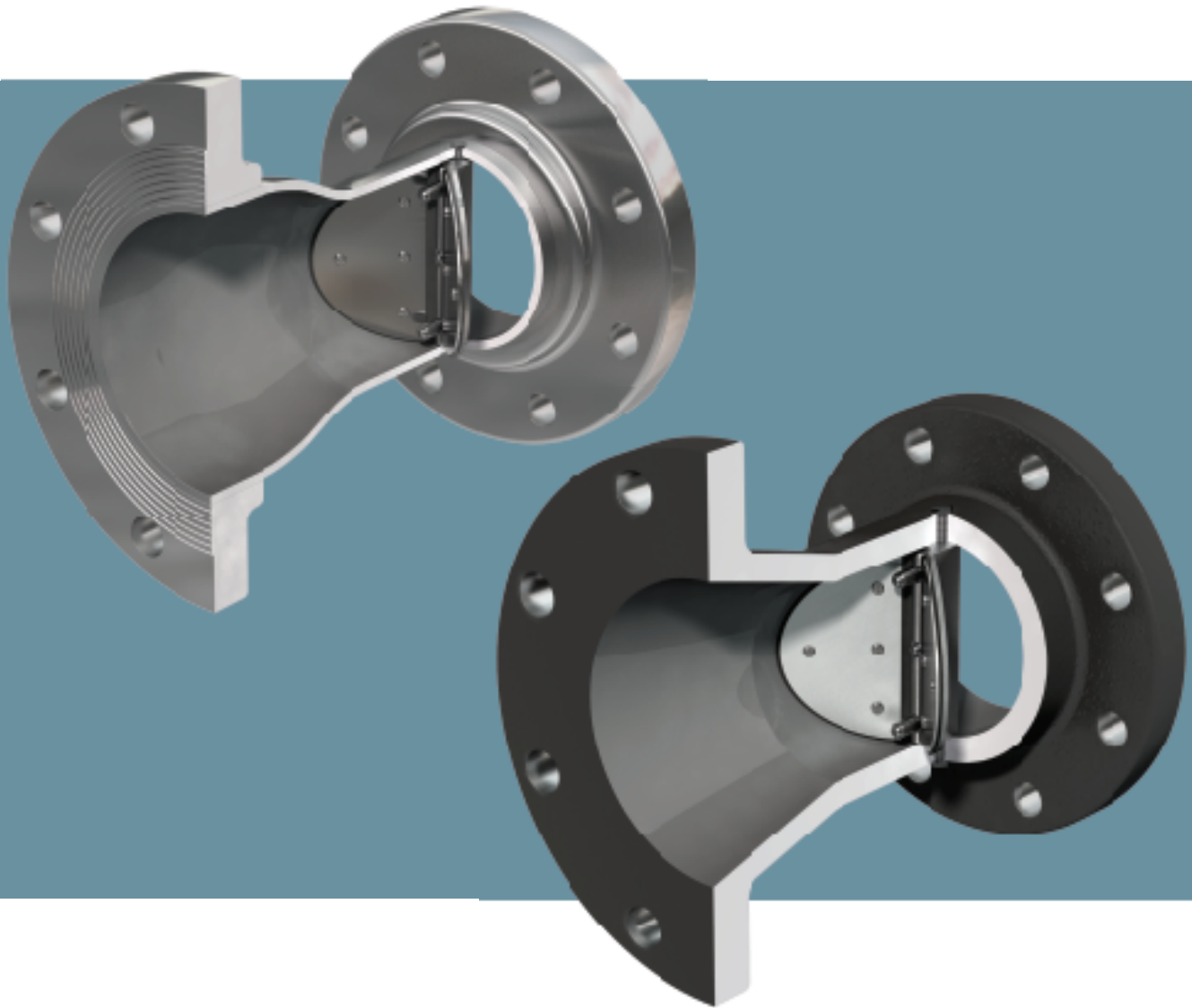


# TECHNO™ Exi-Check Increaser-Decreaser Check Valves



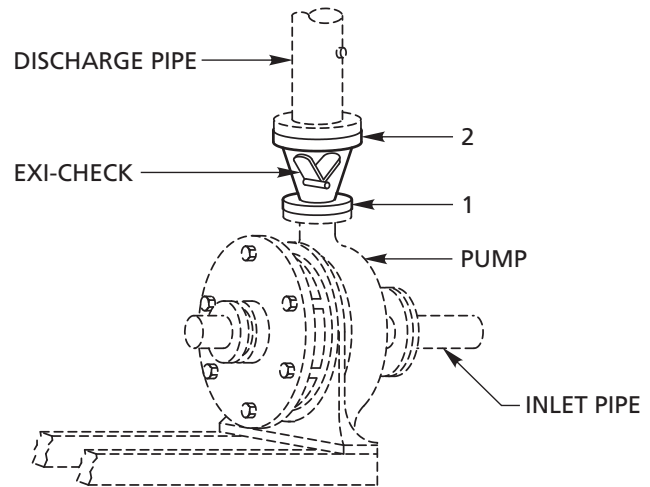
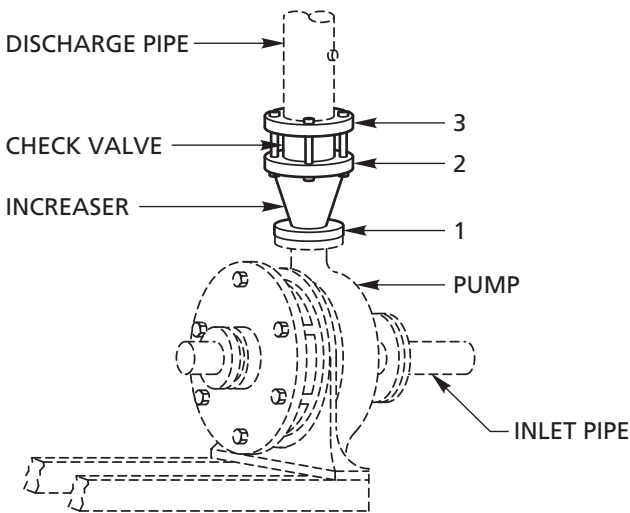
**TECHNO™**

## EXI-CHECK INCREASER-DECREASER CHECK VALVES

### Cost Efficient, Reliable

The TECHNO™ Exi-Check is a simple adaptation of the standard Technocheck valve to a pipe increaser, resulting in both space and dollar savings. The Exi-Check is obviously easier to install than a wafer type check in combination with a line increaser.

Where line increasers are used with installations of multiple pumps, blowers or centrifugal compressors, time, material and costs may be reduced by using an Exi-Check in place of a combination increaser and check valve.



Ideal for Pump and Blower Discharge Applications

### INSTALLATION WITH CHECK VALVE AND INCREASER

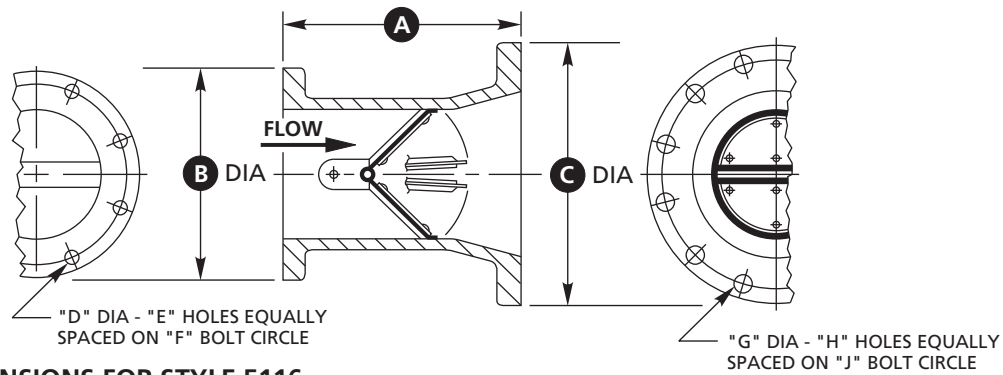
- To Complete Installation
- A. Purchase Increaser
  - B. Purchase Check Valve
  - C. Purchase Special Long Bolts
  - D. Purchase Small Gasket #1
  - E. Purchase Large Gasket #2
  - F. Purchase Large Gasket #3
  - G. Install Increaser
  - H. Install Check Valve
  - I. Install Special Long Bolts
  - J. Install Small Gasket #1
  - K. Install Large Gasket #2
  - L. Install Large Gasket #3

### INSTALLATION WITH EXI-CHECK ONLY

- To Complete Installation
- A. Purchase Exi-Check
  - B. Purchase Small Gasket #1
  - C. Purchase Large Gasket #2
  - D. Install Exi-Check
  - E. Install Small Gasket #1
  - F. Install Large Gasket #2
- Net Savings
- G. **NOT NECESSARY - ELIMINATED**
  - H. **NOT NECESSARY - ELIMINATED**
  - I. **NOT NECESSARY - ELIMINATED**
  - J. **NOT NECESSARY - ELIMINATED**
  - K. **NOT NECESSARY - ELIMINATED**
  - L. **NOT NECESSARY - ELIMINATED**

### STANDARD MODELS AND MATERIALS

STYLE	BODY	INTERNALS	COLD WORKING PRESSURE (psi)
5116	Cast Iron	Aluminum	125
5117	Carbon Steel	Plated Steel	150
5117-316	316 Stainless Steel	316 Stainless Steel	150

**EXI-CHECK INCREASER-DECREASER CHECK VALVES - STYLES 5116**

**GENERAL DIMENSIONS FOR STYLE 5116**

VALVE SIZE in.	A	B	C	D	E	F	G	H	J
1 1/2 x 2	5	5	6	5/8	4	3 7/8	3/4	4	4 3/4
2 x 2 1/2	6	6	7	3/4	4	4 3/4	3/4	4	5 1/2
2 x 3	6	6	7 1/2	3/4	4	4 3/4	3/4	4	6
2 x 4	7	6	9	3/4	4	4 3/4	3/4	8	7 1/2
2 1/2 x 3	6	7	7 1/2	3/4	4	5 1/2	3/4	4	6
2 1/2 x 4	7	7	9	3/4	4	5 1/2	3/4	8	7 1/2
3 x 4	7	7 1/2	9	3/4	4	6	3/4	8	7 1/2
3 x 5	9	7 1/2	10	3/4	4	6	7/8	8	8 1/2
3 x 6	8	7 1/2	11	3/4	4	6	7/8	8	9 1/2
4 x 5	9	9	10	3/4	8	7 1/2	7/8	8	8 1/2
4 x 6	9	9	11	3/4	8	7 1/2	7/8	8	9 1/2
5 x 6	9	10	11	7/8	8	8 1/2	7/8	8	9 1/2
5 x 8	11	10	13 1/2	7/8	8	8 1/2	7/8	8	11 3/4
6 x 8	11	11	13 1/2	7/8	8	9 1/2	7/8	8	11 3/4
8 x 10	12	13 1/2	16	7/8	8	11 3/4	1	12	14 1/4
10 x 12	14	16	19	1	12	14 1/4	1	12	17
12 x 14	16	19	21	1	12	17	1 1/8	12	18 3/4
14 x 16	18	21	23 1/2	1 1/8	12	18 3/4	1 1/8	16	21 1/4
16 x 18	20	23 1/2	25	1 1/8	16	21 1/4	1 1/4	16	22 3/4
18 x 20	22	25	27 1/2	1 1/4	16	22 3/4	1 1/4	20	25
20 x 14	24	27 1/2	32	1 1/4	20	25	1 3/8	20	29 1/2
24 x 30	30	32	38 3/4	1 3/8	20	29 1/2	1 3/8	28	36
30 x 36	36	38 3/4	46	1 3/8	28	36	1 5/8	32	42 3/4

All Dimensions in inches.

**STANDARD MODEL AND MATERIALS**

STYLE	BODY	INTERNALS	COLD WORKING PRESSURE (psi)	FLANGE CLASS
5116	Cast Iron	Aluminum	125	125#
Standard Elastomer: Buna-N				

Consult Factory for Materials, Sizes and Pressure Ratings Not Shown.

**OPTIONAL MATERIAL SELECTION**
**Internal Materials**

- Aluminum
- Brass
- 316 Stainless Steel
- Plated Steel

**SEALING MEMBER MATERIALS**

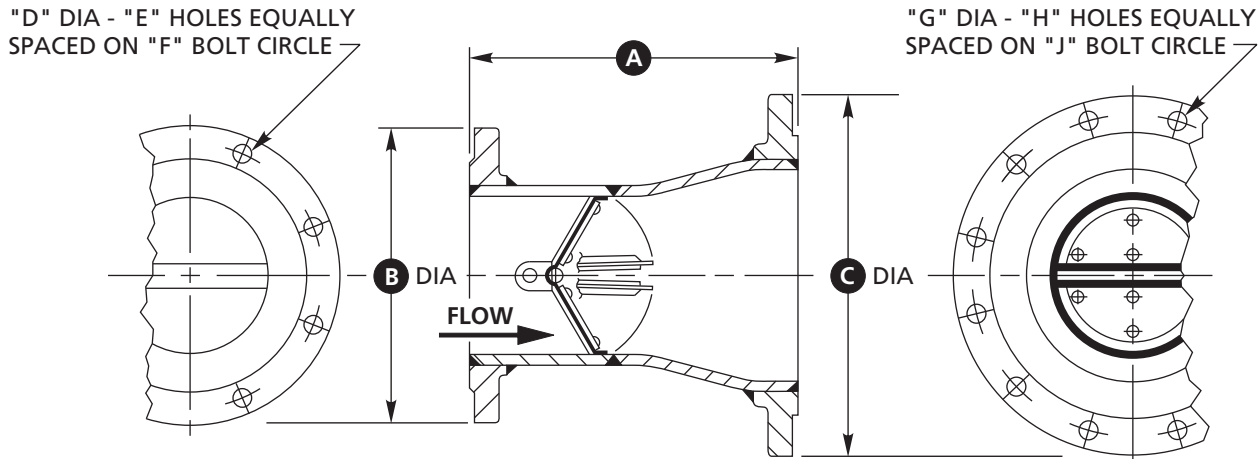
Material	Temperature Range*
• Buna-N	-60°F to 225°F
• Neoprene	-40°F to 225°F
• EPDM	-40°F to 300°F
• Viton	-20°F to 400°F
• Silicone	-100°F to 500°F

\* This temperature range is for general guidance. The figures may vary with application.

**SPRING MATERIAL**

- 302 Stainless Steel

## EXI-CHECK INCREASER-DECREASER CHECK VALVES - STYLE 5117



### GENERAL DIMENSIONS FOR STYLE 5117

VALVE SIZE in.	A	B	C	D	E	F	G	H	J
1 1/2 x 2	6	5	6	5/8	4	3 7/8	3/4	4	4 3/4
2 x 3	7	6	7 1/2	3/4	4	4 3/4	3/4	4	6
2 x 4	7	6	9	3/4	4	4 3/4	3/4	8	7 1/2
3 x 4	8	7 1/2	9	3/4	4	6	3/4	8	7 1/2
3 x 5	9	7 1/2	10	3/4	4	6	7/8	8	8 1/2
4 x 6	10	9	11	3/4	8	7 1/2	7/8	8	9 1/2
5 x 6	10	10	11	7/8	8	8 1/2	7/8	8	9 1/2
5 x 8	11	10	13 1/2	7/8	8	8 1/2	7/8	8	11 3/4
6 x 8	12	11	13 1/2	7/8	8	9 1/2	7/8	8	11 3/4
8 x 10	13	13 1/2	16	7/8	8	11 3/4	1	12	14 1/4
10 x 12	15	16	19	1	12	14 1/4	1	12	17

All Dimensions in inches.

### STANDARD MODELS AND MATERIALS

STYLE	BODY	INTERNALS	COLD WORKING PRESSURE (psi)	FLANGE CLASS
5117	Carbon Steel	Plated Steel	150	150#
5177-316	316 Stainless Steel	316 Stainless Steel	150	150#

Standard Elastomer: Buna-N

Consult Factory for Materials, Sizes and Pressure Ratings Not Shown.

### OPTIONAL MATERIAL SELECTION

#### Internal Materials

- Aluminum
- Brass
- 316 Stainless Steel
- Plated Steel

#### SEALING MEMBER MATERIALS

##### Material Temperature Range\*

- Buna-N -60°F to 225°F
- Neoprene -40°F to 225°F
- EPDM -40°F to 300°F
- Viton -20°F to 400°F
- Silicone -100°F to 500°F

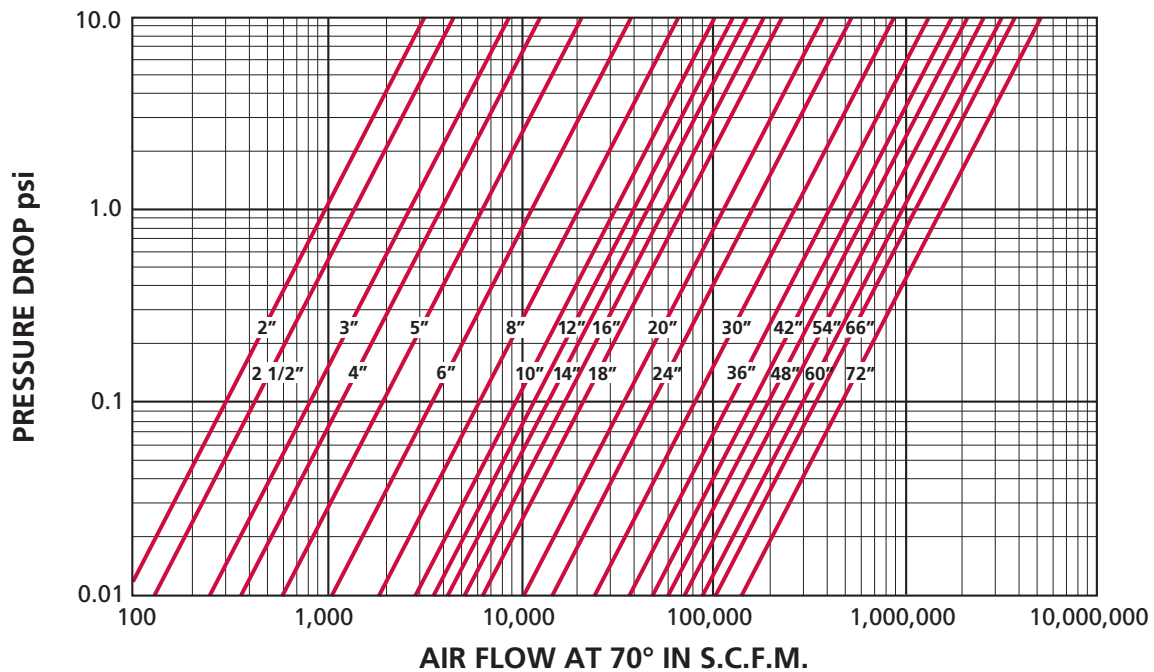
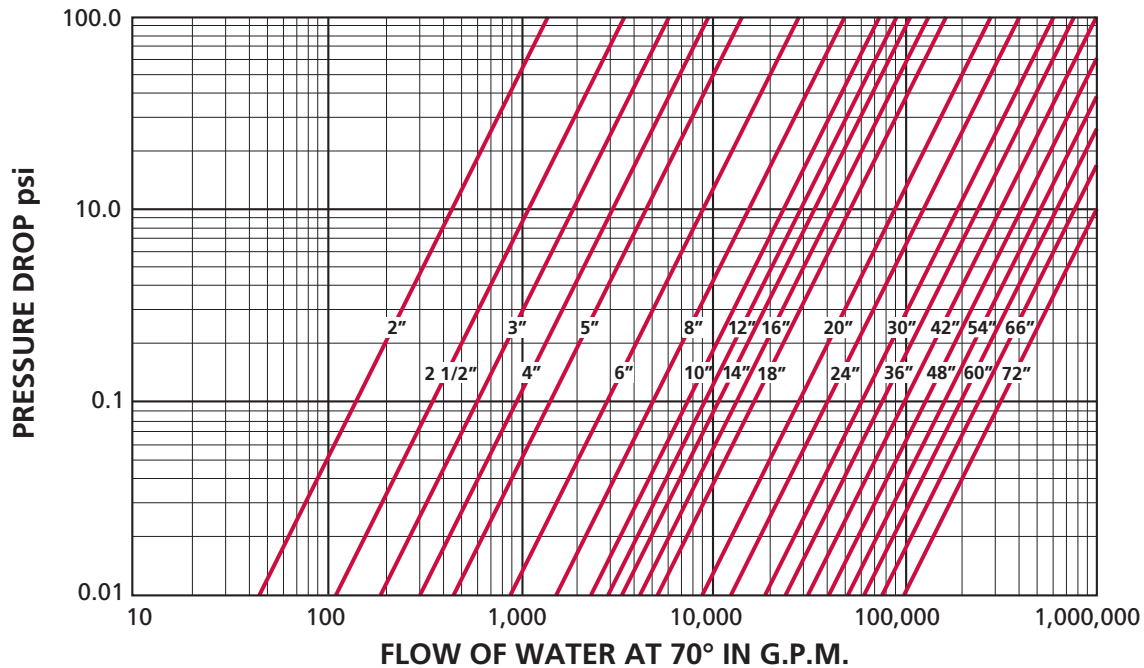
\* This temperature range is for general guidance. The figures may vary with application.

#### SPRING MATERIAL

- 302 Stainless Steel

## EXI-CHECK INCREASER-DECREASER CHECK VALVES STYLES 5116, 5117 & 5117-316

### PRESSURE DROP CHARTS FOR WATER AND AIR SERVICE



#### TRADEMARK INFORMATION

TECHNO™ is a registered trademark which is owned by Cameron.  
This document contains references to registered trademarks or product designations, which are not owned by Cameron.

Trademark	Owner
NEOPRENE	E.I. DuPont De Nemours & Company
VITON	E.I. DuPont De Nemours & Company

CERTIFICATIONS



**VALVES & MEASUREMENT**

3250 Briarpark Drive, Suite 300  
Houston, Texas 77042  
USA Toll Free 800 323 9160

For the most current contact and location information go to: [www.c-a-m.com/valvesandmeasurement](http://www.c-a-m.com/valvesandmeasurement)