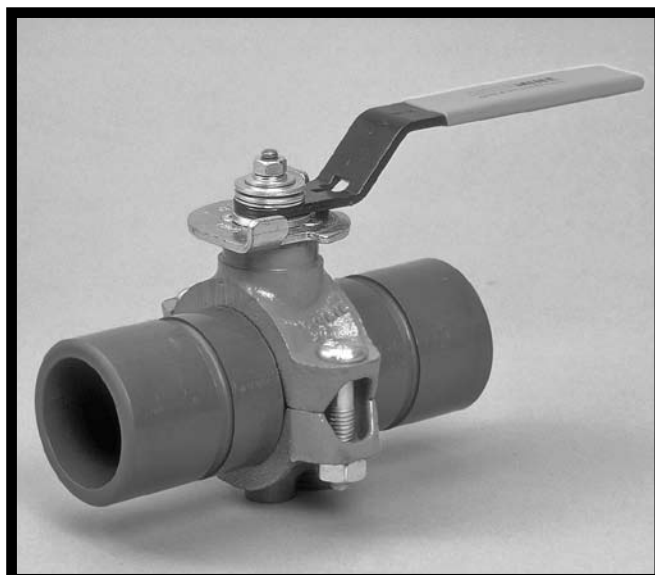





AQUAMINE PRODUCT LISTING




PRODUCT INFORMATION

The information contained in Aquamine, LLC literature is offered as a guideline for customer usage. This information is subject to change without prior notification. For the most current available information, please contact your Aquamine Distributor. While every effort has been made to ensure its accuracy, Aquamine, LLC, its subsidiaries and affiliated companies, make no express or implied warranty of any kind respecting the information contained in this catalog or the material referred to herein.

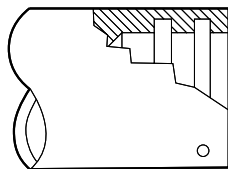
Anyone making use of the information or material contained herein does so at his own risk and assumes any and all liability resulting from such use.

⚠ DANGER	
	COMPRESSED AIR OR COMPRESSED GAS
	Aquamine, LLC pipe, couplings, and associated fittings should never be used for any type of compressed air or compressed gas application.
	Failure to follow above precautions may cause PVC piping components to explode, throwing PVC shards at high velocity that can cause serious injury or death.

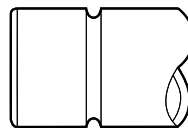
⚠ DANGER	
	ENTRAPPED AIR
	Water is about five (5) times more dense than air at 100 psi. Tests at a leading university indicated pressure surges up to 15 times the operating pressure have been recorded when entrapped air was rapidly vented under pressure. The piping system should be designed to avoid air entrapment. Properly sized air release devices should be installed to protect against air entrapment.
	Failure to follow these instructions will result in pressure surges known as "AIR HAMMER". "AIR HAMMER" IS DANGEROUS and may cause PVC piping components to explode, throwing PVC shards at high velocity that can cause serious injury or death.

PRODUCT END CONNECTION DESIGNATIONS

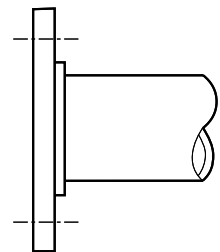
ALF
Aqual Link - Female



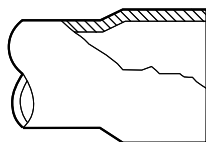
ALM
Aqual Link - Male



FLG
Flange



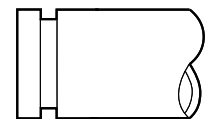
SCF
Solvent Cement - Female



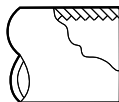
PEM
Plain End - Male



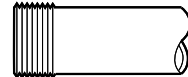
VIC
Victaulic®
Standard Groove



NPT-F
National Pipe
Taper Thread - Female



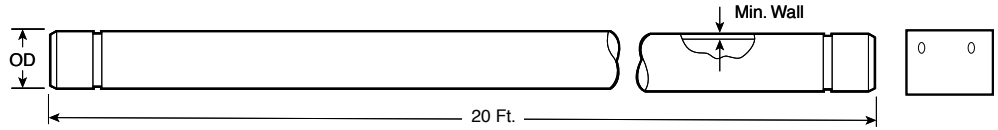
NPT-M
National Pipe
Taper Thread - Male



SERIES 2900

Aquamine Pipe with Coupling

NOTE:
Aquamine pipe is sold in 20 ft. lengths with one coupling included, but packed separately



SIZE Nom. In./mm	SDR	Press. Rating psi/Kpa	Pipe O.D. In./mm	Minimum Wall In./mm	Wgt. Per Ft. Lbs./kg	Part Number
2 50	17	250 1724	2.375 60,3	0.140 3,56	0.69 0,3	290021725
	21	200 1379	2.375 60,3	0.113 2,88	0.57 0,3	290022120
3 80	17	250 1724	3.500 88,9	0.206 5,21	1.45 0,7	290031725
	21	200 1379	3.500 88,9	0.167 4,24	1.19 0,5	290032120
4 100	12.4	350 2413	4.500 114,3	0.363 9,22	2.96 1,3	290040350
	17	250 1724	4.500 114,3	0.265 6,73	2.40 1,1	290041725
	21	200 1379	4.500 114,3	0.214 5,44	1.96 0,9	290042120
	26	160 1103	4.500 114,3	0.173 4,39	1.60 0,7	290042616
6 150	12.4	350 2413	6.625 168,3	0.534 13,56	6.42 2,9	290060350
	17	250 1724	6.625 168,3	0.390 9,91	5.20 2,4	290061725
	21	200 1379	6.625 168,3	0.316 8,03	4.26 1,9	290062120
	26	160 1103	6.625 168,3	0.255 6,48	3.46 1,6	290062616
8 200	12.4	350 2413	8.625 219,1	0.696 17,68	11.03 5,0	290080350
	17	250 1724	8.625 219,1	0.508 12,90	8.81 4,0	290081725
	21	200 1379	8.625 219,1	0.410 10,41	7.21 3,3	290082120
	26	160 1103	8.625 219,1	0.332 8,43	5.91 2,7	290082616
10 250	26	160 1103	10.750 273,1	0.413 10,49	9.20 4,2	290102616
12 300	26	160 1103	12.750 323,9	0.490 12,45	12.98 5,9	290023616

* Pressure rating of these items are limited by the pressure rating of the coupling.

**Aquamine Pipe
Pallet Pack and
Truckload Quantities**

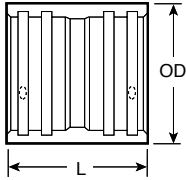
Pipe Size	Feet Per Pallet Pack	Packs Per Truck	Feet Per Truck
2"	2,100	24	50,400
3"	920	24	22,080
4"	520	24	12,480
4" 350 psi	520	24	12,480
6"	400	20	8,000
6" 350 psi	400	16	6,400
8"	280	16	4,480
8" 350 psi	280	14	3,920
10"	160	16	2,560
12"	160	12	1,920

50.01

DIMENSIONS

Series 2904 Aqua Link Coupling

(ALF X ALF)

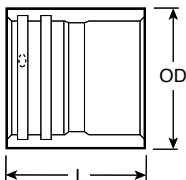


SIZE Nom. In./mm	Press. Rating psi/Kpa	L In./mm	O.D. In./mm	Wgt. Lbs./kg	Part Number
2 50	250 1724	5.25 133,35	3.20 81,28	0.9 0,4	290400002
3 80	250 1724	7.25 184,15	4.38 111,25	1.9 0,9	290400003
4 100	250 1724	8.25 209,55	5.47 138,94	3.1 1,4	290400004
4 HP 100	350 2413	8.25 209,55	6.00 152,40	5.0 2,3	290400024
6 150	250 1724	8.25 209,55	7.84 199,14	5.6 2,5	290400006
6 HP 150	350 2413	8.25 209,55	8.72 221,49	10.5 4,8	290400026
8 200	200 1379	9.50 241,30	10.19 258,83	11.1 5,0	290400008
8 200	250 1724	9.50 241,30	10.19 258,83	11.1 5,0	290480008
8 HP 200	350 2413	9.50 241,30	10.75 273,05	15.2 6,9	290400028
10 250	160 1103	12.00 304,80	12.44 315,98	18.0 8,2	290400010
12 300	160 1103	12.00 304,80	14.65 372,11	24.2 11,0	290400012

Series 2905

Aqua Link X Solvent-Cement Coupling

(ALF X SCF)

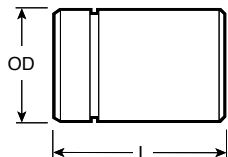


SIZE Nom. In./mm	Press. Rating psi/Kpa	L In./mm	O.D. In./mm	Wgt. Lbs./kg	Part Number
2 50	250 1724	5.50 139,7	3.20 81,28	1.0 0,5	290500002
3 80	250 1724	8.00 203,2	4.38 111,25	2.2 1,0	290500003
4 100	250 1724	9.00 228,6	5.47 138,94	3.4 1,5	290500004
6 150	250 1724	9.00 228,6	7.84 199,14	6.3 2,9	290500006
8 200	200 1379	10.00 254,0	10.19 258,83	12.2 5,5	290500008
10 250	160 1103	12.00 304,8	12.44 315,98	18.7 8,5	290500010
12 300	160 1103	12.00 304,8	14.65 372,11	24.7 11,2	290500012

Series 2906

Aqua Groove X Solvent-Cement Nipple

(ALM X PEM)

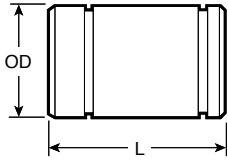


SIZE Nom. In./mm	Press. Rating psi/Kpa	L In./mm	O.D. In./mm	Wgt. Lbs./kg	Part Number
2 50	250 1724	7.00 177,8	2.375 60,33	0.5 0,2	290600002
3 80	250 1724	9.00 228,6	3.50 88,90	1.4 0,6	290600003
4 100	250 1724	10.00 254,0	4.50 114,30	2.4 1,1	290600004
6 150	250 1724	12.00 304,8	6.625 168,28	5.5 2,5	290600006
8 200	200 1379	13.00 330,2	8.625 219,08	9.3 4,2	290600008
10 250	160 1103	16.00 406,4	10.750 273,05	14.2 6,4	290600010
12 300	160 1103	16.00 406,4	12.750 323,85	20.0 9,1	290600012

Series 2907

Aqua Groove X Victaulic® Grooved Nipple

(ALM X VIC)

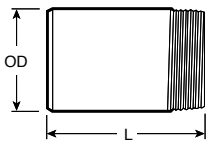


SIZE Nom. In./mm	Press. Rating psi/Kpa	Material	L In./mm	O.D. In./mm	Wgt. Lbs./kg	Part Number
2 50	250 1724	PVC	7.00 177,8	2.375 60,33	0.5 0,2	290700002
3 80	250 1724	PVC	9.00 228,6	3.500 88,90	1.4 0,6	290700003
4 100	240 1655	PVC	10.00 254,0	4.500 114,30	2.4 1,1	290700004
4 HP 100	350 2413	Steel	9.00 228,6	4.500 114,30	5.5 2,5	290790024
6 150	160 1103	PVC	12.00 304,8	6.625 168,28	5.5 2,5	290700024
6 HP 150	350 2413	Steel	10.00 254,0	6.625 168,28	10.0 4,5	290790026
8 200	120 827	PVC	13.00 330,2	8.625 219,08	9.3 4,2	290700008
8 HP 200	350 2413	Steel	10.00 254,0	8.625 219,08	14.5 6,6	290790028
10 250	100 689	PVC	16.00 406,4	10.750 273,05	14.2 6,4	290700010
12 300	80 552	PVC	16.00 406,4	12.750 323,85	20.0 9,1	290700012

Series 2908

Aqua Groove X Male Thread Nipple

(ALM X NPT-M)

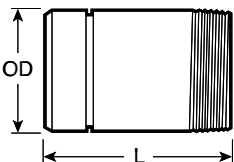


SIZE Nom. In./mm	Press. Rating psi/Kpa	L In./mm	O.D. In./mm	Wgt. Lbs./kg	Part Number
2 50	200 1379	7.00 177,8	2.375 60,33	0.5 0,2	290800002
3 80	190 1310	9.00 228,6	3.500 88,90	1.4 0,6	290800003
4 100	160 1103	10.00 254,0	4.500 114,30	2.4 1,1	290800004
6 150	140 965	12.00 304,8	6.625 168,28	5.5 2,5	290800006
8 200	120 827	13.00 330,2	8.625 219,08	9.3 4,2	290800008
10 250	120 827	16.00 406,4	10.750 273,05	14.2 6,4	290800010
12 300	110 758	16.00 406,4	12.750 323,85	20.0 9,1	290800012

Series 2909

Solvent-Cement X Male Thread Nipple

(PEM X NPT-M)



SIZE Nom. In./mm	Press. Rating psi/Kpa	L In./mm	O.D. In./mm	Wgt. Lbs./kg	Part Number
2 50	200 1379	5.25 133,35	2.375 60,33	0.5 0,2	290900002
3 80	190 1310	6.50 165,10	3.500 88,90	1.4 0,6	290900003
4 100	160 1103	7.00 177,80	4.500 114,30	2.4 1,1	290900004
6 150	140 965	9.00 228,6	6.625 168,28	5.5 2,5	290900006
8 200	120 827	10.40 264,16	8.625 219,08	9.3 4,2	290900008
10 250	120 827	16.00 406,40	10.750 273,05	14.2 6,4	290900010
12 300	110 758	16.00 406,40	12.750 323,85	20.0 9,1	290900012

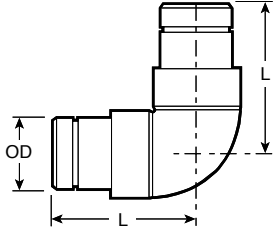
50.01

DIMENSIONS

Series 2910

Aqua Link 90° Elbow

(ALM X ALM)

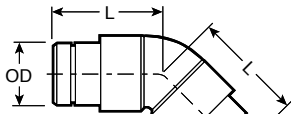


SIZE Nom. In./mm	Press. Rating psi/Kpa	L In./mm	O.D. In./mm	Wgt. Lbs./kg	Part Number
2 50	250 1724	8.00 203,20	2.375 60,33	1.8 0,8	291000002
3 80	250 1724	10.88 276,35	3.500 88,90	4.6 2,1	291000003
4 100	250 1724	12.38 314,45	4.500 114,30	8.0 3,6	291000004
6 150	250 1724	15.63 397,00	6.625 168,28	19.6 8,9	291000006
8 200	200 1379	18.00 457,20	8.625 219,08	34.4 15,6	291000008
10 250	160 1103	25.10 637,54	10.750 273,05	57.2 25,9	291000010
12 300	160 1103	25.70 652,78	12.750 323,85	83.9 38,1	291000012

Series 2912

Aqua Link 45° Elbow

(ALM X ALM)



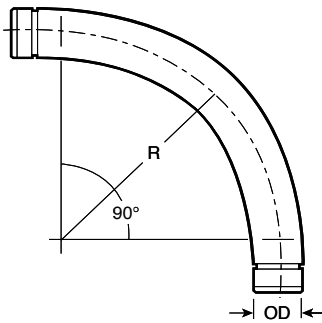
SIZE Nom. In./mm	Press. Rating psi/Kpa	L In./mm	O.D. In./mm	Wgt. Lbs./kg	Part Number
2 50	250 1724	7.75 196,85	2.375 60,33	1.7 0,8	291200002
3 80	250 1724	9.75 247,65	3.500 88,90	3.9 1,8	291200003
4 100	250 1724	11.75 298,45	4.500 114,30	7.0 3,2	291200004
6 150	250 1724	13.00 330,20	6.625 168,28	16.4 7,4	291200006
10 250	1379 1103	381,00 464,82	219,08 273,05	13,0 21,5	291200010
12 300	160 1103	18,30 476,25	10,750 323,85	47,4 33,0	291200012

DIMENSIONS

Series 2913

Aqua Link 90° Sweep

(ALM X ALM)



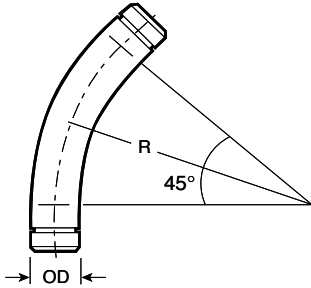
SIZE Nom. In./mm	Press. Rating psi/Kpa	L In./mm	O.D. In./mm	Wgt. Lbs./kg	Part Number
2 50	250 1724	12.0 304,8	2.375 60,33	2.1 1,0	291300002
3 80	250 1724	18.0 457,2	3.500 88,90	6.4 2,9	291300003
4 100	250 1724	21.5 546,1	4.500 114,30	10.9 4,9	291300004
4 HP 100	350 2413	21.5 546,1	4.500 114,30	14.8 6,7	291300024
6 150	250 1724	29.0 736,6	6.625 168,28	28.4 12,9	291300006
6 HP 150	350 2413	29.0 736,6	6.625 168,28	43.2 19,6	291300026
8 200	200 1379	30.0 762,0	8.625 219,08	44.0 20,0	291300008
8 HP 200	350 2413	30.0 762,0	8.625 219,08	67.4 30,6	291300028
10 250	160 1103	65.0 1651,0	10.750 273,05	121.5 55,1	291300010
12 300	160 1103	66.0 1676,4	12.750 323,85	170.7 77,4	291300012

DIMENSIONS

Series 2914

**Aqua Link
45° Sweep**

(ALM X ALM)

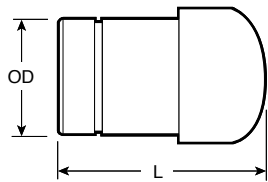


SIZE Nom. In./mm	Press. Rating psi/Kpa	L In./mm	O.D. In./mm	Wgt. Lbs./kg	Part Number
2 50	250 1724	12.0 304,8	2.375 60,33	1.3 0,6	291400002
3 80	250 1724	18.0 457,2	3.500 88,90	4.1 1,9	291400003
4 100	250 1724	21.5 546,1	4.500 114,30	6.9 3,1	291400004
4 HP 100	350 2413	21.5 546,1	4.500 114,30	9.4 4,3	291400024
6 150	250 1724	29.0 736,6	6.625 168,28	17.9 8,1	291400006
6 HP 150	350 2413	29.0 736,6	6.625 168,28	27.3 12,4	291400026
8 200	200 1379	30.0 762,0	8.625 219,08	29.9 13,6	291400008
8 HP 200	350 2413	30.0 762,0	8.625 219,08	45.8 20,8	291400028
10 250	160 1103	65.0 1651,0	10.750 273,05	75.0 34,0	291400010
12 300	160 1103	66.0 1676,4	12.750 323,85	105.4 47,8	291400012

Series 2915

**Aqua Groove
End Cap**

(ALM)

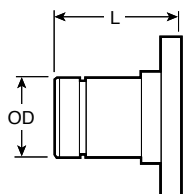


SIZE Nom. In./mm	Press. Rating psi/Kpa	L In./mm	O.D. In./mm	Wgt. Lbs./kg	Part Number
2 50	250 1724	7.50 190,5	2.375 60,33	1.0 0,5	291500002
3 80	250 1724	10.00 254,0	3.500 88,90	2.2 1,0	291500003
4 100	250 1724	11.00 279,4	4.500 114,30	3.7 1,7	291500004
6 150	250 1724	14.00 355,6	6.625 168,28	8.5 3,9	291500006
8 200	200 1379	17.50 444,5	8.625 219,08	15.5 7,0	291500008
10 250	160 1103	18.50 469,9	10.750 273,05	22.4 10,2	291500010
12 300	160 1103	19.50 495,3	12.750 323,85	32.0 14,5	291500012

Series 2916

**Aqua Groove X
Flange Transition**

(ALM X FLG)



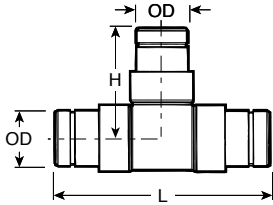
SIZE Nom. In./mm	Press. Rating psi/Kpa	L In./mm	O.D. In./mm	Wgt. Lbs./kg	Part Number
2 50	150 1034	7.25 184,15	2.375 60,33	1.5 0,7	291600002
3 80	150 1034	9.25 234,95	3.500 88,90	3.2 1,5	291600003
4 100	150 1034	10.25 260,35	4.500 114,30	5.2 2,4	291600004
6 150	150 1034	12.25 311,15	6.625 168,28	10.0 4,5	291600006
8 200	150 1034	13.88 352,55	8.625 219,08	16.0 7,3	291600008
10 250	150 1034	16.50 419,10	10.750 273,05	25.5 11,6	291600010
12 300	150 1034	16.50 419,10	12.750 323,85	37.9 17,2	291600012

DIMENSIONS

Series 2917

Aqua Link Tee

(ALM X ALM X ALM)

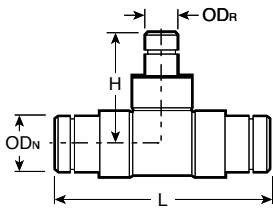


SIZE Nom. In./mm	Press. Rating psi/Kpa	L In./mm	O.D. In./mm	Wgt. Lbs./kg	Part Number
2 50	250 1724	16.50 419,10	2.375 60,33	2.6 1,2	291700002
3 80	250 1724	21.50 546,10	3.500 88,90	6.5 2,9	291700003
4 100	250 1724	24.75 628,65	4.500 114,30	10.5 4,8	291700004
6 150	250 1724	31.00 787,40	6.625 168,28	27.1 12,3	291700006
8 200	200 1379	36.25 920,75	8.625 219,08	27.8 12,6	291700008
10 250	160 1103	45.38 1152,65	10.750 273,05	42.6 19,3	291700010
12 300	160 1103	45.00 1143,00	12.750 323,85	60.0 27,2	291700012

Series 2918

Aqua Link Reducing Tee

(ALM X ALM X ALM)

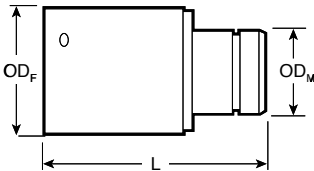


SIZE Nom. In./mm	Press. Rating psi/Kpa	L In./mm	O.D. _n In./mm	O.D. _r In./mm	Wgt. Lbs./kg	Part Number
3 X 3 80 X 80	X 2 X 50	21.50 546,10	3.500 88,90	2.375 60,33	3.3 1,5	291800332
4 X 4 100 X 100	X 2 X 50	22.50 571,50	4.500 114,30	2.375 60,33	5.4 2,4	291800442
	X 3 X 80	24.50 622,30	4.500 114,30	3.500 88,90	6.3 2,9	291800443
6 X 6 150 X 150	X 2 X 50	31.00 787,40	6.625 168,28	2.375 60,33	11.5 5,2	291800662
	X 3 X 80	31.00 787,40	6.625 168,28	3.500 88,9	12.3 5,6	291800663
	X 4 X 100	31.00 787,40	6.625 168,28	4.500 114,3	13.4 6,1	291800664
8 X 8 200 X 200	X 4 X 100	36.25 920,75	8.625 219,08	4.500 114,30	21.0 9,5	291800884
	X 6 X 150	36.25 920,75	8.625 219,08	6.625 168,28	24.0 10,9	291800886

Series 2919

Aqua Link X Aqua Link Reducer

(ALF X ALM)



SIZE Nom. In./mm	Press. Rating psi/Kpa	L In./mm	O.D. _n In./mm	O.D. _m In./mm	Wgt. Lbs./kg	Part Number
4 X 2 100 X 50	X 2 X 50	15.25 387,35	5.470 138,94	2.375 60,33	5.2 2,4	291900042
	X 3 X 80	15.56 395,22	5.470 138,94	3.500 88,90	5.6 2,5	291900043
6 X 2 150 X 50	X 2 X 50	15.75 400,05	7.840 199,14	2.375 60,33	9.9 4,5	291900062
	X 3 X 80	16.50 419,10	7.840 199,14	3.500 88,90	10.6 4,8	291900063
	X 4 X 100	17.38 441,45	7.840 199,14	4.500 114,30	11.5 5,2	291900064
8 X 2 200 X 50	X 2 X 50	17.00 431,80	10.190 258,83	2.375 60,33	23.4 10,6	291900082
	X 4 X 100	15.63 397,00	10.190 258,83	4.500 114,30	30.0 13,6	291900084
	X 6 X 150	18.50 469,90	10.190 258,83	6.625 168,28	23.5 10,7	291900086
10 X 8 250 X 150	X 8 X 150	19.75 501,65	12.440 315,98	8.625 219,08	34.1 15,5	291900108
12 X 8 300 X 150	X 8 X 150	22.25 565,15	14.650 372,11	8.625 219,08	43.9 19,9	291900128

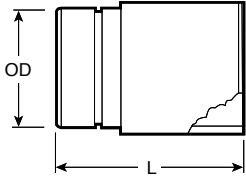
NOTE: Other size configurations available.

DIMENSIONS

Series 2920

**Aqua Link X
Solvent-Cement
Transition**

(ALM X SCF)

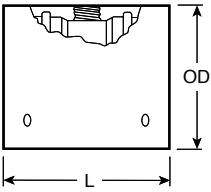


SIZE Nom. In./mm	Press. Rating psi/Kpa	L In./mm	O.D. In./mm	Wgt. Lbs./kg	Part Number
2 50	250 1724	6.625 168,28	2.375 60,33	1.2 0,5	292000002
3 80	250 1724	8.625 219,08	3.500 88,90	2.4 1,1	292000003
4 100	250 1724	9.625 244,48	4.500 114,30	3.5 1,6	292000004
6 150	250 1724	11.375 288,93	6.625 168,28	8.4 3,8	292000006
8 200	200 1379	12.875 327,03	8.625 219,08	16.2 7,3	292000008
10 250	160 1103	15.250 387,35	10.750 273,05	28.7 13,0	292000010
12 300	160 1103	15.250 387,35	12.750 323,85	37.6 17,1	292000012

Series 2930

**Aqua Link Outlet
Coupling**

(ALF X ALF X NPT-F)

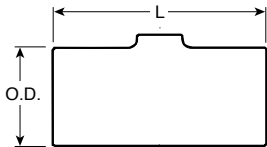


SIZE Nom. In./mm	Press. Rating psi/Kpa	L In./mm	O.D. In./mm	Wgt. Lbs./kg	Part Number	
2 X 2 50 X 50	X 3/4 X 20	200 1379	7.00 177,80	3.20 81,28	1.2 0,5	293000022
	X 1 X 25	200 1379	7.00 177,80	3.20 81,28	1.2 0,5	293100022
3 X 3 80 X 80	X 3/4 X 20	200 1379	9.50 241,30	4.38 111,25	2.6 1,2	293000033
	X 1 X 25	200 1379	9.50 241,30	4.38 111,25	2.6 1,2	293100033
	X 1 1/2 X 40	160 1103	9.50 241,30	4.38 111,25	2.6 1,2	293300033
4 X 4 100 X 100	X 3/4 X 20	200 1379	10.50 266,70	5.47 138,94	4.0 1,8	293000044
	X 1 X 25	200 1379	10.50 266,70	5.47 138,94	4.0 1,8	293100044
	X 1 1/2 X 40	160 1103	10.50 266,70	5.47 138,94	4.0 1,8	293300044
6 X 6 150 X 150	X 3/4 X 20	200 1379	11.25 285,75	7.84 199,14	7.3 3,3	293000066
	X 1 X 25	200 1379	11.25 285,75	7.84 199,14	7.3 3,3	293100066
	X 1 1/2 X 40	200 1379	11.25 285,75	7.84 199,14	7.3 3,3	293300066
	X 2 X 50	160 1103	11.25 285,75	7.84 199,14	7.3 3,3	293500066
8 X 8 200 X 200	X 3/4 X 20	200 1379	12.50 317,50	10.19 258,83	13.6 6,2	293000088
	X 1 X 25	200 1379	12.50 317,50	10.19 258,83	13.6 6,2	293100088
	X 1 1/2 X 40	200 1379	12.50 317,50	10.19 258,83	13.6 6,2	293300088
	X 2 X 50	200 1379	12.50 317,50	10.19 258,83	13.6 6,2	293500088
10 X 10 250 X 250	X 3/4 X 20	160 1103	15.00 381,00	12.44 315,98	22.0 10,0	293001010
	X 1 X 25	160 1103	15.00 381,00	12.44 315,98	22.0 10,0	293101010
	X 1 1/2 X 40	160 1103	15.00 381,00	12.44 315,98	22.0 10,0	293301010
	X 2 X 50	160 1103	15.00 381,00	12.44 315,98	22.0 10,0	293501010
12 X 12 300 X 300	X 3/4 X 20	160 1103	15.00 381,00	14.65 372,11	29.1 13,2	293001212
	X 1 X 25	160 1103	15.00 381,00	14.65 372,11	29.1 13,2	293101212
	X 1 1/2 X 40	160 1103	15.00 381,00	14.65 372,11	29.1 13,2	293301212
	X 2 X 50	160 1103	15.00 381,00	14.65 372,11	29.1 13,2	293501212

DIMENSIONS

Styles 2937, 2938 & 2939

Aquamine Formed Outlet Fitting



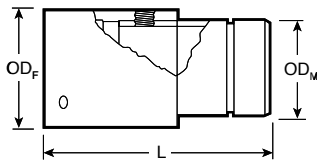
SIZE Nominal Inches Actual mm	Length "L" Inches mm	Outside Diameter Inches mm	Maximum Working Pressure – PSI/kPa					
			Style 2937		Style 2938		Style 2939	
			1" NPT Tap	Part Number	1 1/2" NPT Tap	Part Number	2" NPT Tap	Part Number
2 60,3	7.50 191	3.20 81	250 1725	293700022	–	–	–	–
3 88,9	11.00 279	4.38 111	250 1725	293700033	250 1725	293800033	–	–
4 114,3	12.00 305	5.47 139	250 1725	293700044	250 1725	293800044	250 1725	293900044
6 168,3	12.00 305	7.84 199	250 1725	293700066	250 1725	293800066	250 1725	293900066

NOTE: The pressure ratings noted above are based upon the capability of the female threaded socket. If a plastic threaded pipe nipple is used, the rating will be based upon values cited in ASTM-D1785 for Schedule 80 threaded pipe nipples.

Series 2940

Aqua Link Outlet Fitting

(ALF X ALM X NPT-F)

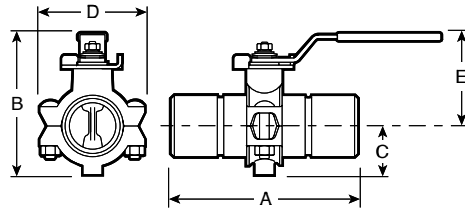


SIZE Nom. In./mm		Press. Rating psi/Kpa	L In./mm	O.D. _F In./mm	O.D. _M In./mm	Wgt. Lbs./kg	Part Number
2 X 2 50 X 50	X 3/4	250	10.13	3.20	2.375	1.5	294000022
	X 20	1724	257,3	81,28	60,33	0,7	
	X 1	250	10.13	3.20	2.375	1.5	294100022
	X 25	1724	257,3	81,28	60,33	0,7	
3 X 3 80 X 80	X 3/4	250	13.50	4.35	3.500	3.6	294000033
	X 20	1724	342,9	110,49	88,90	1,6	
	X 1	250	13.50	4.35	3.500	3.6	294100033
	X 25	1724	342,9	110,49	88,90	1,6	
4 X 4 100 X 100	X 1 1/2	240	13.50	4.35	3.500	3.6	294300033
	X 40	1655	342,9	110,49	88,90	1,6	
	X 3/4	250	15.00	5.47	4.500	5.9	294000044
	X 20	1724	381,0	138,94	138,94	2,7	
6 X 6 150 X 150	X 1	250	15.00	5.47	4.500	5.9	294100044
	X 25	1724	381,0	138,94	138,94	2,7	
	X 1 1/2	240	15.00	5.47	4.500	5.9	294300044
	X 40	1655	381,0	138,94	138,94	2,7	
8 X 8 200 X 200	X 3/4	250	17.00	7.84	6.625	11.8	294000066
	X 20	1724	431,8	199,14	168,28	5,4	
	X 1	250	17.00	7.84	6.625	11.8	294100066
	X 25	1724	431,8	199,14	168,28	5,4	
10 X 10 250 X 250	X 1 1/2	240	17.00	7.84	6.625	11.8	294300066
	X 40	1655	431,8	199,14	168,28	5,4	
	X 2	200	17.00	7.84	6.625	11.8	294400066
	X 50	1379	431,8	199,14	168,28	5,4	
12 X 12 300 X 300	X 3/4	200	19.00	10.19	8.625	21.5	294000088
	X 20	1379	482,6	258,83	219,08	9,8	
	X 1	200	19.00	10.19	8.625	21.5	294100088
	X 25	1379	482,6	258,83	219,08	9,8	
10 X 10 250 X 250	X 1 1/2	200	19.00	10.19	8.625	21.5	294300088
	X 40	1379	482,6	258,83	219,08	9,8	
	X 2	200	19.00	10.19	8.625	21.5	294400088
	X 50	1379	482,6	258,83	219,08	9,8	
10 X 10 250 X 250	X 3/4	160	22.25	12.44	10.750	32.9	294000110
	X 20	1103	571,5	315,98	273,05	14,9	
	X 1	160	22.25	12.44	10.750	32.9	294100110
	X 25	1103	571,5	315,98	273,05	14,9	
12 X 12 300 X 300	X 1 1/2	160	22.25	12.44	10.750	32.9	294300110
	X 40	1103	571,5	315,98	273,05	14,9	
	X 2	160	22.25	12.44	10.750	32.9	294400110
	X 50	1103	571,5	315,98	273,05	14,9	
12 X 12 300 X 300	X 3/4	160	22.25	14.65	12.750	44.7	294000112
	X 20	1103	571,5	372,11	323,85	20,3	
	X 1	160	22.25	14.65	12.750	44.7	294100112
	X 25	1103	571,5	372,11	323,85	20,3	
12 X 12 300 X 300	X 1 1/2	160	22.25	14.65	12.750	44.7	294300112
	X 40	1103	571,5	372,11	323,85	20,3	
	X 2	160	22.25	14.65	12.750	44.7	294400112
	X 50	1103	571,5	372,11	323,85	20,3	

**Aquamine®
Butterfly Valve**

The Aquamine® butterfly valve is designed for use with Aquamine system components for pipe sizes ranging from 2 - 6" (50 - 150 mm). Series AQV valves are rated for 250 psi (1725 kPa) at 73°F (23°C) to provide reliable, leak-free, dead-end service. The butterfly valve consists of a PVC body, external ductile iron upper and lower housings, a Grade "T" nitrile coated disc, and bronze upper and lower bushings, plus a two-position handle.* All wetted components are either PVC or nitrile.

* Other manual and power actuation options are available. Consult Aquamine for details.



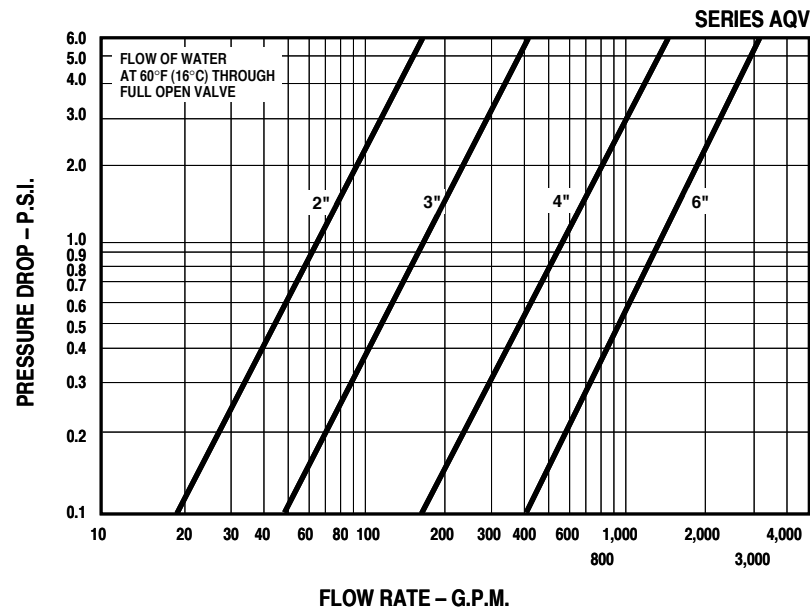
Patented

Pipe Inches/mm		Dimensions - Inches/millimeters					Aprx. Weight Each Lbs./kg	Part Number
Nom. Size	Actual Size	End to End A	Overall Height B	C	D	E		
2	2.375	7.20	5.47	1.88	4.06	3.59	3.3	295000002
50	60,3	183	139	48	103	91	1,5	
3	3.500	10.61	7.12	2.76	5.63	4.37	6.0	295000003
80	88,9	269	181	70	143	111	2,7	
4	4.500	12.00	10.15	3.50	7.00	6.65	14.0	295000004
100	114,3	305	258	89	178	169	6,4	
6	6.625	12.50	12.65	4.50	9.50	8.65	28.0	295000006
150	168,3	318	321	114	241	220	12,7	

Service Rating

Pressure De-Rating at Sustained Elevated Service Temperature			
Temperature °F/°C	Working Pressure psi/kPa	Temperature °F/°C	Working Pressure psi/kPa
80	220	120	100
27	1517	49	689
90	187	130	75
32	1289	54	517
100	155	140	55
38	1069	60	379
110	125		
43	862		

Performance

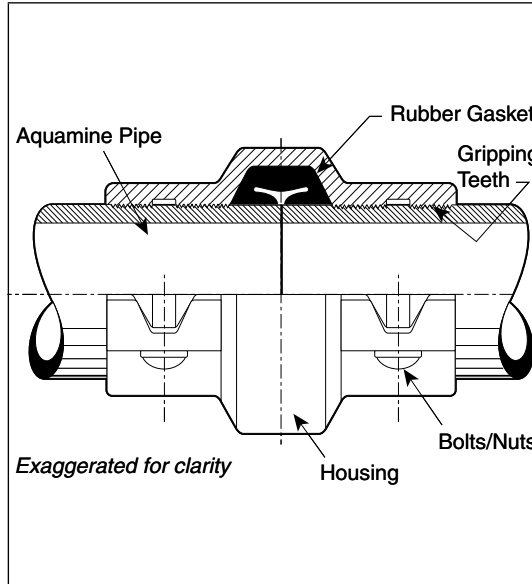


SERIES 2970

Aquamine® Plain End Pipe Coupling



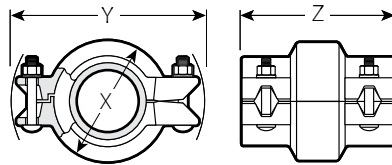
The Aquamine® plain end pipe repair and access coupling provides the convenience of bolted mechanical assembly of Aquamine PVC pipe. There is no pipe preparation; no solvent cement mess or cure time. The rugged ductile iron housing has patented, specially formed integral gripping teeth which engage into the pipe to secure it as the bolts are tightened metal-to-metal. Couplings are rated to 350 psi working pressure, or the working pressure of the Aquamine pipe, whichever is lower.



Housing – Durable ductile iron body for rugged service conditions. Integral gripping teeth provide connection to the pipe. Rust-resistant blue enamel finish is standard. The ductile iron body conforms to ASTM A-536.

Pre-lubricated Gasket – Elastomer gasket with triple seal design provides a leak free seal for a wide variety of services. The gasket is pre-lubricated to speed and ease assembly. The Grade “T” nitrile gasket is suited for ambient water and petroleum services. (Always refer to pipe manufacturer’s data for temperature and pressure ratings.)

Bolts/Nuts/Washers – Zinc plated carbon steel bolts and nuts are supplied standard with Aquamine plain end couplings. The four bolt assembly speeds installation versus solvent cement assembly or the multiple bolts required for flanged connections. Bolts have a minimum tensile strength of 110,000 psi. All sizes are supplied with hardened steel washers meeting ASTM F-436 Type 3 (weathering steel).



(2”/50 mm size has one bolt per side.)

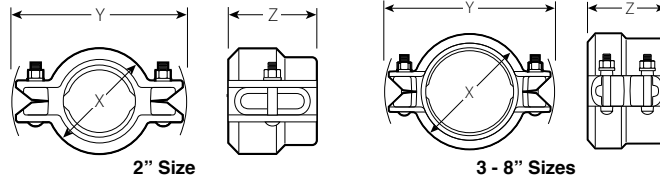
Pipe Inches/millimeters		Coupling Dimensions Inches/millimeters			Bolt/Nut No. – Size Inches	Approximate Weight Each Lbs./kg	Part Number
Nominal Size	Actual Size	X	Y	Z			
2 50	2.375 60.3	3.64 92	5.94 151	3.62 92	2 – 1/2 X 2 1/2	3.5 1,6	297000002
3 80	3.500 88.9	4.58 116	6.95 177	4.56 116	4 – 1/2 X 2 3/4	7.7 3,5	297000003
4 100	4.500 114.3	5.88 149	8.09 205	5.78 147	4 – 1/2 X 2 3/4	11.6 5,3	297000004
6 150	6.625 168.3	8.00 203	10.84 275	5.88 149	4 – 5/8 X 3 1/4	16.4 7,4	297000006
8 200	8.625 219.1	10.19 259	13.22 336	6.00 152	4 – 5/8 X 3 1/4	24.9 11,3	297000008

*Working pressure and End Load are total, from all internal and external loads, based on proper coupling assembly with bolts pads metal-to-metal, on Aquamine PVC pipe. Couplings are designed to be used with plain end pipe.

Metric thread size bolts (plated) are available (color coded) for all coupling sizes upon request. Contact Aquamine for details.

WARNING: Piping systems must always be depressurized and drained before attempting disassembly and removal of any Aquamine piping products.

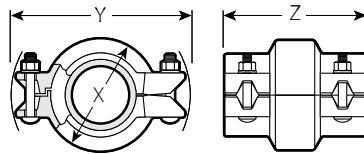
**Aquamine®
Plain-End PVC to
Groove Transition
Coupling**



Pipe Size		Dimensions Inches/millimeters			Bolt Data		Part Number
Nominal Diameter In./mm	Actual Outside Diameter In./mm	X	Y	Z	Quantity	Size Inches	
2 50	2.375 60,3	3.31 84	5.22 133	2.78 71	2	5/8 X 2	297200002
3 80	3.500 88,9	4.38 111	6.99 178	3.20 81	4	1/2 X 2 3/4	297200003
4 100	4.500 114,3	5.68 144	8.25 210	3.90 99	4	1/2 X 2 3/4	297200004
6 150	6.625 168,3	7.84 199	11.25 286	4.00 102	4	5/8 X 3Zv	297200006
8 200	8.625 219,1	10.18 259	13.96 355	4.16 106	4	5/8 X 3 1/2	297200008

SERIES 2971

**Aquamine®
Plain-End PVC to HDPE
Transition Coupling**



(2"/50 mm size has one bolt per side.)

Pipe Size		Coupling Dimensions Inches/millimeters			Bolt/Nut No. - Size Inches	Approx. Weight Each Lbs./kg	Part Number
Nominal Diameter In./mm	Actual Outside Diameter In./mm	X	Y	Z			
2 50	2.375 60,3	3.64 92	5.94 151	3.62 92	2 - 1/2 X 2 1/2	3.5 1,6	297100002
3 80	3.500 88,9	4.58 116	6.95 177	4.56 116	4 - 1/2 X 2 3/4	7.7 3,5	297100003
4 100	4.500 114,3	5.88 149	8.09 205	5.78 147	4 - 1/2 X 2 3/4	11.6 5,3	297100004
6 150	6.625 168,3	8.00 203	10.84 275	5.88 149	4 - 5/8 X 3Zv	16.4 7,4	297100006
8 200	8.625 219,1	10.19 259	13.22 336	6.00 152	4 - 5/8 X 3Zv	24.9 11,3	297100008

SPARE PARTS

**Splines
(Straws)**

SIZE Nom. In./mm	Description	Regular		HP	
		Shape	Part No.	Shape	Part No.
2 50	Aqua Spline	R	299900002	—	—
3 80	Aqua Spline	R	299900003	—	—
4 100	Aqua Spline	R	299900004	S	299900024
6 150	Aqua Spline	R	299900006	S	299900026
8 200	Aqua Spline	S	299900008	S	299900028
10 250	Aqua Spline	S	299900010	—	—
12 300	Aqua Spline	S	299900012	—	—

R = Round Cross-section
S = Square Cross-section

O-Rings

**(Pre-lubricated,
Permanent Use)**

SIZE Nom. In./mm	Description	Regular	HP
		Part No.	Part No.
2 50	Aqua O-Ring	299999202	—
3 80	Aqua O-Ring	299999203	—
4 100	Aqua O-Ring	299999204	299999214
6 150	Aqua O-Ring	299999206	299999206
8 200	Aqua O-Ring	299999208	299999208
10 250	Aqua O-Ring	299999210	—
12 300	Aqua O-Ring	299999212	—

TYPICAL SPECIFICATION FOR AQUAMINE PIPING SYSTEM

1.0 SCOPE

This specification covers the requirements for a reusable, spline-connected, high impact polyvinyl chloride (PVC) piping system as manufactured by Aquamine, LLC (a Victaulic Company).

The pipe and couplings used in this system shall be listed in NSF Certified Product Listing under Standard 61, for potable water (health effects) and designated as NSF-61.

NOTE: The Aquamine PVC piping system is not to be used in compressed air and gas service.

2.0 PIPE

Pipe shall be Aquamine high impact type manufactured from a special formulation of PVC 1120 defined as type 1, grade 1 (class 12454-B) according to ASTM D-1784 and shall contain impact modifiers and ultraviolet inhibitors to enhance long-term performance.

Pipe shall be designed to meet all PVC pipe requirements as specified in ASTM D-2241. Each pipe end shall be grooved to be connected using a specially designed coupling and spline.

Pipe shall be listed under NSF Standard 61 for potable water (health effects) and designated as NSF-61.

3.0 COUPLINGS

Couplings shall be Aquamine AquaLink brand made from a special high impact formulation of PVC 1120 (type 1, grade 1 or class 12454-B according to ASTM D-1784). Couplings shall be designed to meet ASTM D-3139 standards for joints for plastic pressure pipes using flexible elastomeric seals.

Couplings shall provide a restrained joint by means of a nylon spline inserted into the space created when the groove on the pipe and the interior groove in the coupling are aligned.

Couplings shall contain a pre-lubricated permanent type O-ring seal on each end for a watertight hydraulic seal. The O-rings shall meet ASTM F-477 (Standard Specification for Elastomeric Seal for Joining PVC Pipe).

Couplings shall be listed under NSF Standard 61, for potable water (health effects) and designated as NSF-61.

4.0 FITTINGS

Fittings shall be manufactured by Aquamine, LLC with spline-grooved ends for use with Aquamine pipe and couplings.

5.0 VALVES

Valves shall be Aquamine AQV Series butterfly valves, rated 250 psi at 73 degrees F (1725kPa at 23 degrees C). NOTE: Operating pressure is reduced at temperatures greater than 70 degrees F. Ductile iron (ASTM A-536, grade 65-45-12) housing, PVC 1120 body. Ductile iron disc, rubber encapsulated with Grade "T" Nitrile compound conforming to ASTM D-2000 designation 5BG615A14B24.

6.0 ASSEMBLY

Assembly of Aquamine couplings and pipe shall be in accordance with the latest revision of the Aquamine Assembly and Installation Instructions AM-I-100.

